

CHANNEL EXCAVATION ITEM 106			
LOCA	STA	STA	POS
✓	810+00	816+00	LT

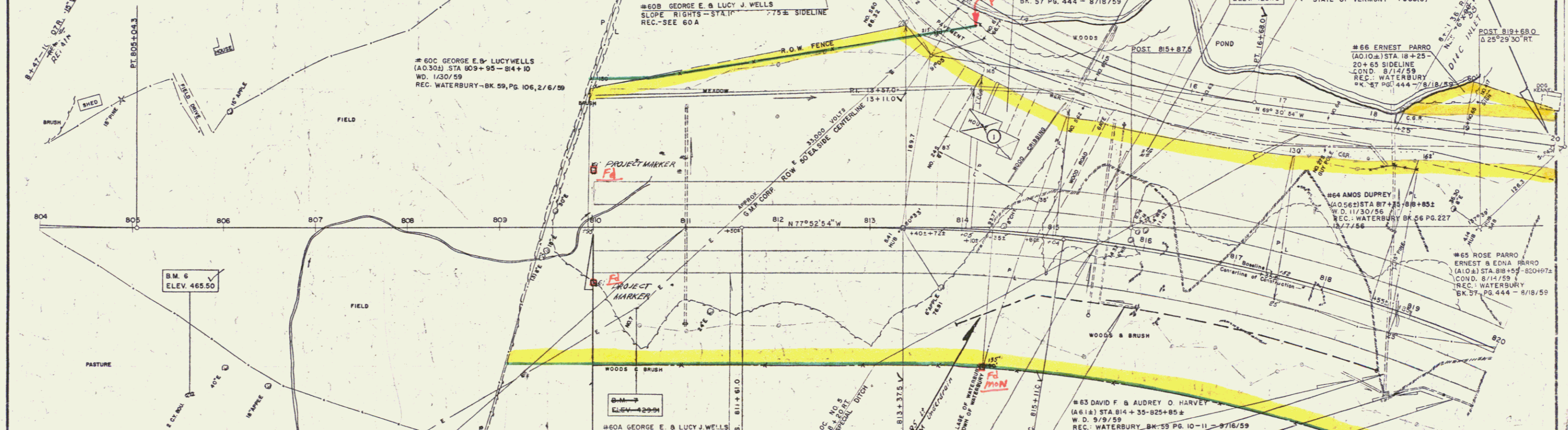
EXCAVATION & REMOVAL OF ROAD SURFACE ON ROADWAYS ITEM 113-A			
LOCA	STA	STA	POS
US-2 REL	12+50	13+50	RT
N.C.S.	13+50	14+50	RT

CONSTRUCT DRIVES			
LOCA	STATION	POS	
US-2	11+50	11+50	RT
M.L.	10+46	10+46	RT
M.L.	10+40	10+40	RT

FILL BELOW ELEVATION 410.0 TO BE MADE FROM ROCK SEE SPECIAL PROVISION NO. 6			
LOCA	STA	STA	POS
US-2	11+10	15+40	
*	15+60	18+80	

Steel Guide Posts			
Loca	Sta	Sta	Pos
US-2	13+21	13+21	RT

DEMOLITION & REMOVAL OF BUILDING ITEM 108			
Bldg. No.	Station	Pos	
✓ 1	814+25	LT	



LANDSCAPE MATERIAL PROJECT 189-2(7) CONTRACT NO. 1	
1. Sta 832+00 - 838+00 Left	31
White Cedar	19
Canada Hemlock	11
Norway Spruce	16
Torturian Honeysuckle	46
Am. Hop Hornbeam	48
Shod Bush	2
2. Sta 849+00 - 854+00 Left	2
Norway Spruce	2
Canada Hemlock	1
E. White Pine	3
Red Pine	2
Sugar Maple	1
N. Red Oak	10
Paper Birch	8
Winged Euonymus	46
Coralberry	46
Snowberry	600
Parrotia	1
3. Sta 891+40 - 913+60 Right (Rest Area - NB Lane)	2
Norway Spruce	1
4. U.S. 2 Relocation-Sta 858+65-858+90 Right	1
Norway Spruce	1

- GENERAL NOTES**
- Size of Planting Material
    - Evergreen Trees Should Be 2 1/2 - 3 1/2 Ft. in Height.
    - Large Deciduous Trees Should Be 3/4" To 1" in Caliber With A Minimum Height Of 6 To 8 Feet.
    - Small Deciduous Trees Should Be 1/16" in Caliber, 5 To 6 Feet in Height With 6 Or More Branches.
    - Deciduous Shrubs Should Be 2' To 3' in Height, With Not Less Than 4 Cones, 2 Feet And Up.
  - All Conifers Must Have Dormant Birds And Secondary Needles.
  - All Plant Material To Be Graded According To American Standards For Nursery Stock.

STONE FILL FOR SLOPE PROTECTION ITEM 522			
LOCA	STA	STA	POS
✓	811+46	812+00	LT

THREE CABLE GUARD RAIL WITH STEEL POSTS ITEM 543			
LOCA	STA	STA	POS
RT Lane	810+00	820+00	LT
LT Lane	810+00	820+00	RT
US-2 REL	13+30	15+26	RT
"	10+30	10+10	LT
RT Lane	810+00	820+00	LT
"	814+25	820+00	RT

DRILLING & BLASTING OF SOLID ROCK ITEM 113			
LOCA	STA	STA	POS
✓	812+50	813+00	

SOD REMOVAL ITEM 101			
LOCA	STA	STA	POS
✓	810+00	819+00	

CONTRACT NO. 1

STATE OF VERMONT  
DEPARTMENT OF HIGHWAYS

INTERSTATE PROJECT IN THE TOWNS OF  
WATERBURY - BOLTON

PLAN  
STA. 810+00 TO 820+00

WEBSTER, MARTIN, INC.  
CONSULTING ENGINEERS  
50 BURLINGTON VT.

DESIGNED BY R.M.M. DRAWN BY C.E.W.  
CHECKED BY R.M.M. DATE 10/1/59

PROJECT NO. 189-2(7) SCALE 1"=40'

B.M. 6 SPOT ON 2 CY BOULDER 162 RT STA 805+67 ELEV 465.50  
B.M. 7 SPIKE IN POLE NO. 7-67 RT STA 810+00 ELEV 426.15  
B.M. 8 SPOT ON LEDGE 100' T STA 815+85 ELEV 426.15

const  
2