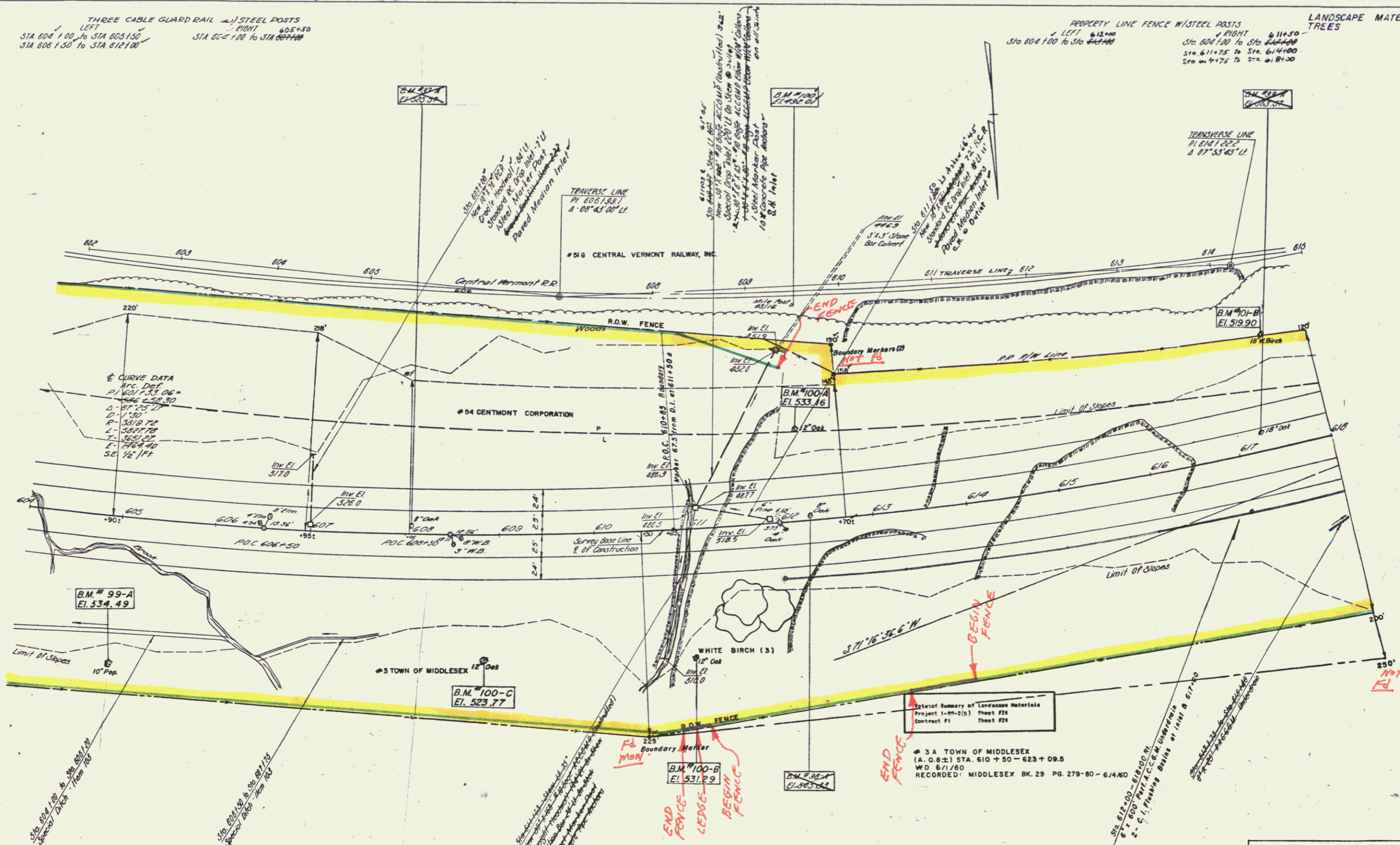


THREE CABLE GUARD RAIL w/ STEEL POSTS  
 LEFT POINT 605+50  
 STA 604+00 TO STA 605+00  
 STA 606+50 TO STA 612+00

PROPERTY LINE FENCE w/ STEEL POSTS  
 LEFT POINT 612+00  
 STA 604+00 TO STA 612+00  
 RIGHT POINT 611+50  
 STA 604+00 TO STA 612+00  
 STA 611+75 TO STA 614+00  
 STA 614+75 TO STA 618+00

LANDSCAPE MATERIAL TREES



B.M. #99-A S.I.R. 10" Pop. 160' Rl. Sta. 605+00 Elev. 543.49'  
 B.M. #100-A S.I.T. 12" Oak 140' L.L. Sta. 612+25 Elev. 533.16'  
 B.M. #100-B S.I.R. 12" Oak 140' Rl. Sta. 611+00 Elev. 531.29'  
 B.M. #100-C S.I.T. 12" Oak 136' Rl. Sta. 608+85 Elev. 523.77'  
 B.M. #101-B S.I.T. 18" W. Birch 125' L. Sta. 617+55 Elev. 519.90'

STATE OF VERMONT DEPARTMENT OF HIGHWAYS	
INTERSTATE PROJECT IN THE TOWNS OF MIDDLESEX — WATERBURY	
PLAN	
WILLIAM H. McFARLAND ENGINEER	
SURVEYED BY	CHECKED BY
DRAWN BY	IN CHARGE
PROJECT NO. 189-201	CONTRACT NO. SHEET 36 OF 315