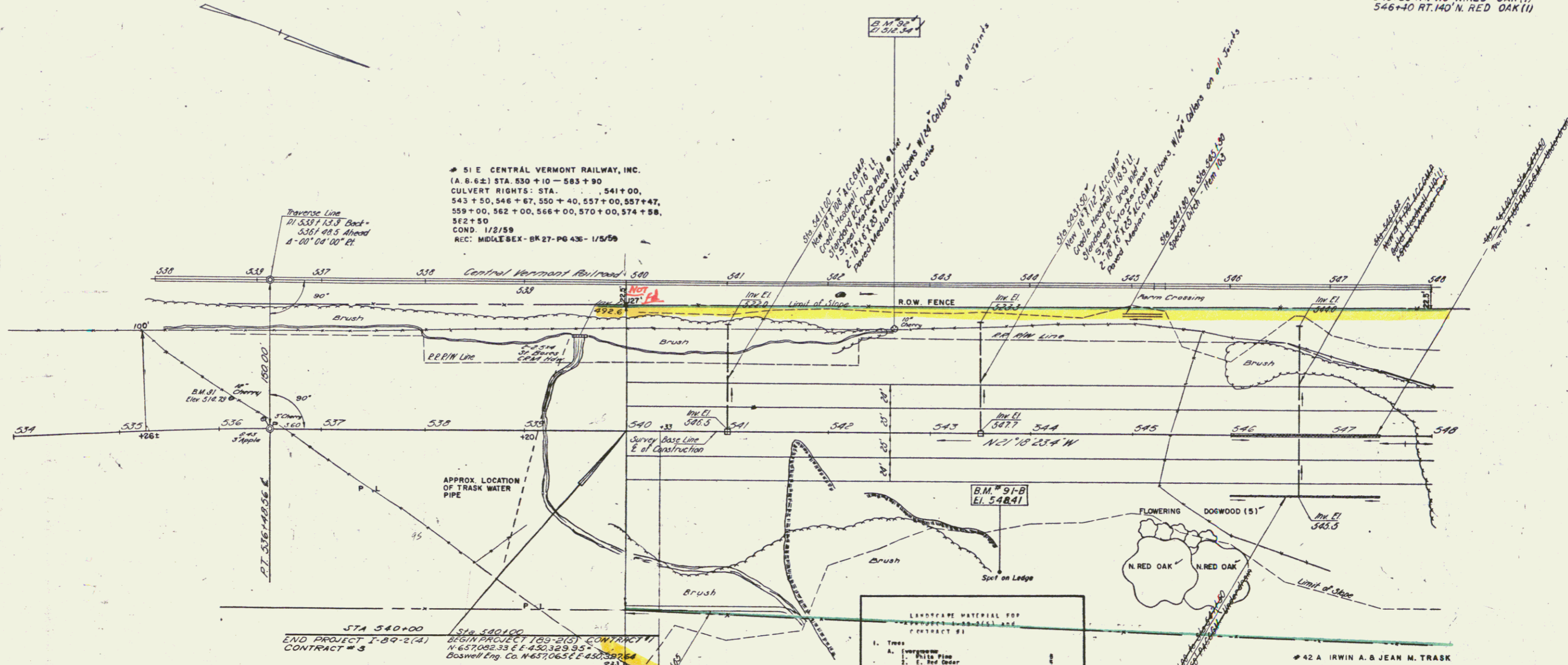


3 CABLE GUARD RAIL W/STEEL POSTS  
LEFT RIGHT  
Sta 540+00 to Sta 541+00 13 Sta 541+00 to Sta 542+00  
545+41 538+18

PROPERTY LINE FENCE W/STEEL POSTS  
LEFT RIGHT  
Sta 540+00 to Sta 541+00 Sta 541+00 to Sta 542+00

LANDSCAPE MATERIAL  
TREES  
545+15-546+40 RT 80'-100'  
5 FLOWERING DOGWOOD  
545+60 RT. 110' N. RED OAK (1)  
546+40 RT. 140' N. RED OAK (1)

51 E CENTRAL VERMONT RAILWAY, INC.  
(A. 8.62) STA. 530+10 - 583+90  
CULVERT RIGHTS: STA. 541+00,  
543+50, 546+87, 550+40, 557+00, 557+47,  
559+00, 562+00, 566+00, 570+00, 574+58,  
582+50  
COND. 1/2/59  
REC: MIDDLESEX-BK 27-PG 435-1/5/59



STA 540+00  
END PROJECT T-89-2(4)  
CONTRACT # 3

STA 540+00  
RIGHT PROJECT 109-2(1) CONTINUED  
N. 65° 10' 02.33" E 450.329.95'  
Boswell Eng. Co. N. 65° 10' 02.33" E 450.329.95'

LANDSCAPE MATERIAL FOR  
PROJECT 109-2(1) AND  
CONTRACT # 3

1. Trees	
A. Evergreen	0
1. White Pine	0
2. Red Spruce	0
3. White Spruce	0
B. Deciduous	10
1. Northern Red Oak	10
2. White Birch	0
3. Flowering Dogwood	0
2. Shrubs	100
1. Stone Pine	100
3. General Notes	
A. All planting material	
1. Evergreen trees should be 3 year old transplants or older.	
2. Large deciduous trees should be 2 to 3 inch inches in caliper with a minimum height of 7 to 8 feet.	
3. All deciduous trees should be 1 1/4 inch in caliper, 5 to 6 feet in height with 4 or more branches.	
4. Deciduous shrubs should be 2 to 3 feet in height, with not less than 4 canes, 2 feet and up.	
B. All plant material to be graded according to American standards for Nursery stock.	
C. Fertilizer (10-10-10) to be applied at the same time as the grass seed at the rate of 50 lbs. /A/	

42 A IRWIN A. & JEAN M. TRASK  
(A. 65.62) STA. 535+30 - 568+80  
RIGHTS: CROSS WATER LINE STA. 539+20  
W. D. 7/3/57  
RECORDED: MIDDLESEX BK. 27 PG. 164-65-7/13/57  
SURPLUS: (A. 49.3) STA. 538+15 - 568+80  
SEE 200 SCALE SHEET 1 OF 4

SP 59 : 49.3 A ±  
SOLD OFF to Grace W. Colby, QCD  
26 APRIL 1963 BK 7 Pg 2

STATE OF VERMONT  
DEPARTMENT OF HIGHWAYS

INTERSTATE PROJECT IN THE TOWNS OF  
MIDDLESEX - WATERBURY

PLAN

WILLIAM H. McFARLAND  
ENGINEER  
BINGHAMTON, N. Y.

DESIGNED BY: DATE: 11-1-59  
IN CHARGE: DATE:  
PROJECT NO. 109-2(1) SHEET 26 OF 315  
CONTRACT NO. 1

BM 9-B Sta 543+70  
Spot on Ledge 140' RT.  
Elev. 548.48

BM 9-B Sta 543+70  
Spot on Ledge 140' RT.  
Elev. 548.48