

THREE CABLE GUARD RAIL WITH STEEL POSTS
 212+0 - 213+31 LT.
 220+0 - 226+0 RT.
 220+0 - 226+0 LT.

EXCAV & REMOVAL OF ROAD SURF. ON ROADWAYS ITEM IIS A
 214+30 LT - 223+0
 215+0 - 223+0

REMOVAL & DISPOSAL OF PRESENT GUARD RAIL ITEM 550
 STA 224+03 - 226+00 RT
 STA 224+00 - 225+00 LT

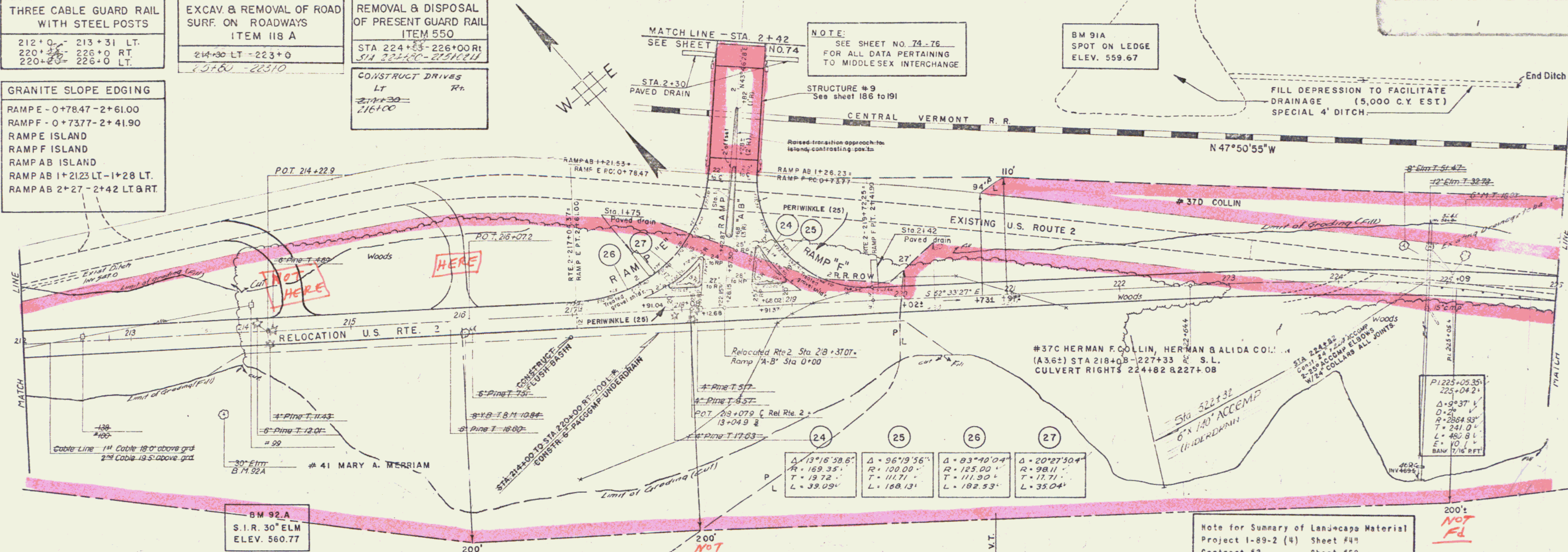
GRANITE SLOPE EDGING
 RAMP E - 0+78.47 - 2+61.00
 RAMP F - 0+73.77 - 2+41.90
 RAMP ISLAND
 RAMP F ISLAND
 RAMP AB ISLAND
 RAMP AB 1+21.23 LT - 1+28 LT.
 RAMP AB 2+27 - 2+42 LT & RT

CONSTRUCT DRIVES
 LT RT
 214+30 - 216+00

NOTE:
 SEE SHEET NO. 74-76
 FOR ALL DATA PERTAINING TO MIDDLESEX INTERCHANGE

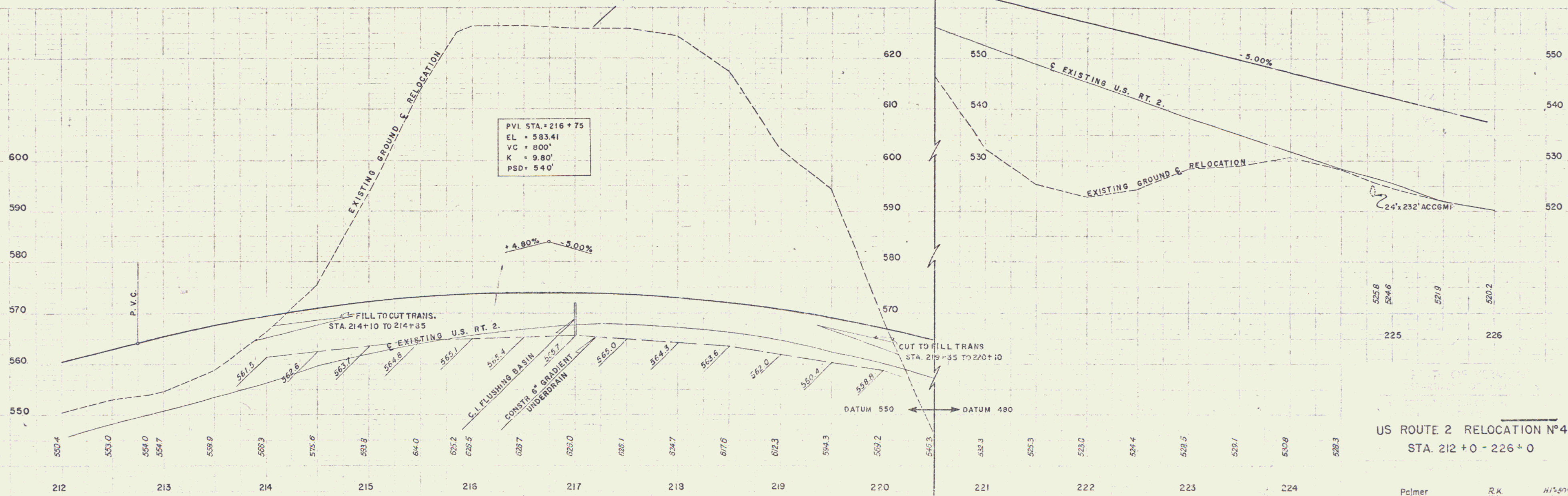
BM 91A
 SPOT ON LEDGE
 ELEV. 559.67

FILL DEPRESSION TO FACILITATE DRAINAGE (5,000 C.Y. EST)
 SPECIAL 4' DITCH



24	25	26	27
$\Delta = 13^{\circ}18'38.8''$ $R = 169.35'$ $T = 19.72'$ $L = 39.09'$	$\Delta = 96^{\circ}19'56''$ $R = 100.00'$ $T = 111.71'$ $L = 168.13'$	$\Delta = 83^{\circ}40'04''$ $R = 125.00'$ $T = 111.30'$ $L = 192.53'$	$\Delta = 20^{\circ}27'50.4''$ $R = 98.11'$ $T = 17.71'$ $L = 35.04'$

Note for Summary of Landscape Material
 Project 1-89-2 (4) Sheet #41
 Contract #3 Sheet #52



US ROUTE 2 RELOCATION N°4
 STA. 212+0 - 226+0

Palmer S.M. R.K. H.S. 1/4" = 10' Ag. '57
 PROJECT 1-89-2 (4) 72 800

const 53