

REMOVAL AND DISPOSAL OF PRESENT GUARD RAIL ITEM 550  
 STA. 84+00 to 5788 LT 85+62  
 STA. 5473 to 8+35 LT  
 86+37 to 5+10 LT.

DRILLING & BLASTING OF SOLID ROCK SUBGRADE ITEM 114 MOD.  
 STA. 84+00 to 4138  
 STA. 4138 to 5140  
 STA. 6+42 to 6+55 7+24

THREE CABLE GUARD RAIL WITH STEEL POSTS ITEM 543  
 STA. 84+00 to 84+65 LT  
 STA. 7+50 to 7+75 LT  
 STA. 14+65 to 16+00 LT. B RT.

STEEL BEAM GUARD RAIL  
 STA. 7+28 to 7+86 RT.

EXCAV. & REMOVAL OF ROAD SURF. ON ROADWAYS ITEM 118 A  
 STA. 84+00 to 4+50  
 STA. 7+50 to 8+50  
 CONSTRUCT DRIVE 3+25 RT. N5+50 DR.

REVISED BASE LINE CHORD DEFINITION  
 P.I. 12+32.0  
 D = 37.0  
 Δ = 40°38'  
 R = 1432.7  
 T = 530.44  
 L = 1015.83  
 BANK 3/4" PER FT.

#21 E MYRTLE M. THOMPSON  
 (A 23) 388+00 - 394+76.2  
 W.D. 12/26/58  
 RECORDED: MIDDLESEX BK.27  
 P.6,362-64 12/31/58

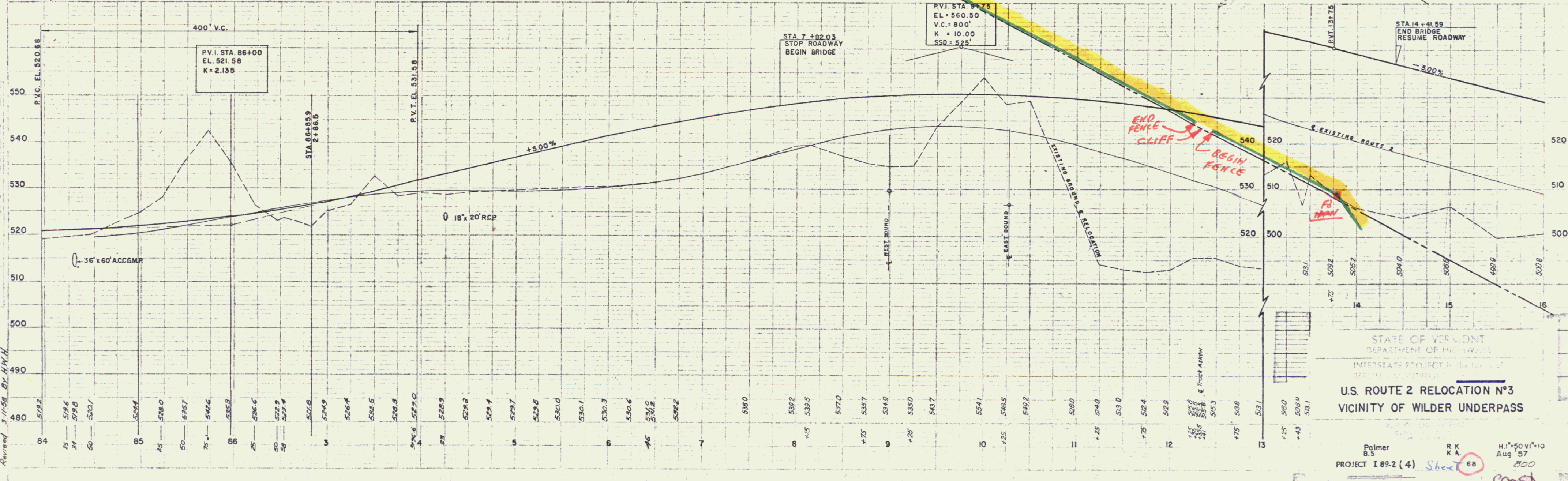
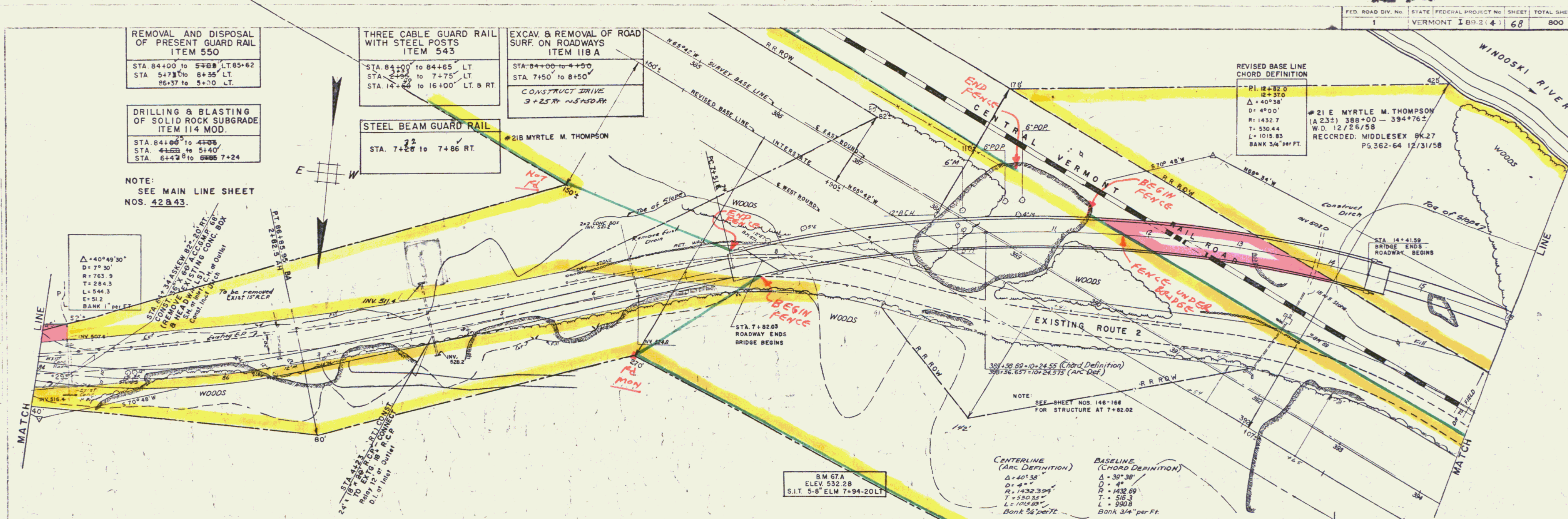
NOTE:  
 SEE MAIN LINE SHEET NOS. 42 & 43.

Δ = 40°49'30"  
 D = 7°30'  
 R = 763.9  
 T = 284.3  
 L = 544.3  
 E = 51.2  
 BANK 1" PER FT.

CENTERLINE (ARC DEFINITION)  
 Δ = 40°38'  
 D = 4°  
 R = 1432.394  
 T = 530.35  
 L = 1015.83  
 Bank 3/4" per Ft.

BASELINE (CHORD DEFINITION)  
 Δ = 30°38'  
 D = 4°  
 R = 4132.89  
 T = 516.3  
 L = 990.8  
 Bank 3/4" per Ft.

B.M. 67A  
 ELEV. 532.28  
 S.I.T. 5-8' ELM 7+94-20LT



STATE OF VERMONT  
 DEPARTMENT OF HIGHWAYS  
 INTERSTATE PROJECT # 89-2 (4)  
**U.S. ROUTE 2 RELOCATION N°3**  
 VICINITY OF WILDER UNDERPASS

Polmer B.S. R.K. K.A. H.I. 50 VI 10  
 PROJECT I 89-2 (4) Sheet 68 Aug 57  
 Const

APR 57 PALMER - ISHAM  
 APR 57 A.B.  
 APR 57 U.C.  
 APR 57 S.P.  
 Revised 3-11-59 BY H.M.H.