

EXCAVATION & REMOVAL OF ROAD SURFACE ON ROADWAYS ITEM 118A STA. 4+00 - 5+00

REMOVAL AND DISPOSAL OF EXISTING GUARD RAIL ITEM 550 6+60 - 8+95 LEFT

A = 25' - 22' LT  
D = 25'  
R = 2864.9'  
T = 50.2'  
L = 110.3

A = 50' - 31' LT  
D = 85'  
R = 716.8'  
T = 338.18'  
L = 631.46'  
BANK 1' PER FT.

STEEL GUIDE POSTS  
12+50 LT TOWARD 11  
17+30 RT TOWARD 12

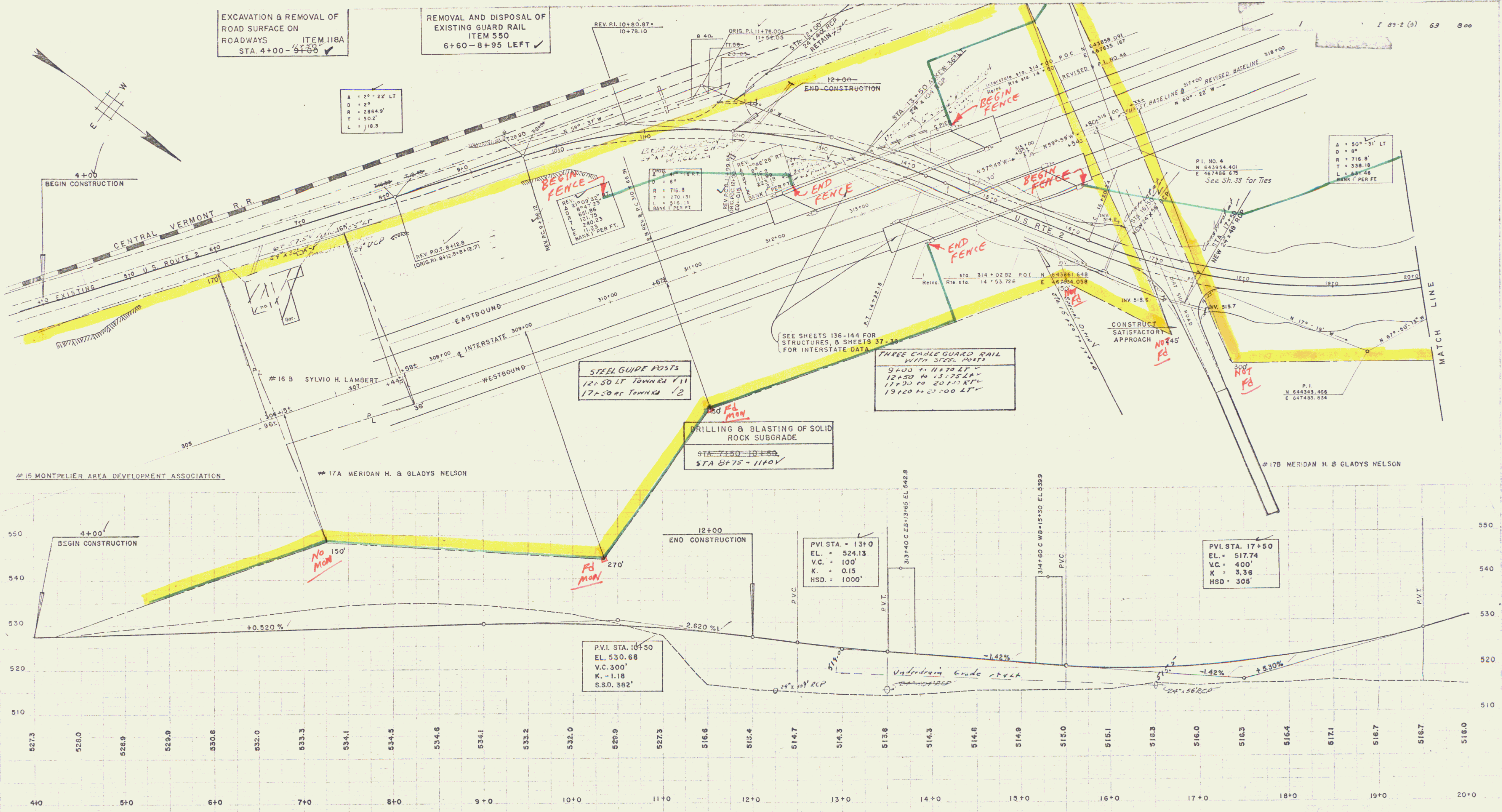
THREE CABLE GUARD RAIL WITH STEEL POSTS  
9+00 TO 11+70 LT  
12+50 TO 13+25 RT  
17+50 TO 20+10 RT  
19+20 TO 21+00 LT

DRILLING & BLASTING OF SOLID ROCK SUBGRADE  
STA 7+50 - 10+50  
STA 8+75 - 11+00

PVI STA. 13+0  
EL. = 524.13  
V.C. = 100'  
K = 0.15  
HSD = 1000'

PVI STA. 17+50  
EL. = 517.74  
V.C. = 400'  
K = 3.36  
HSD = 305'

PVI STA. 10+50  
EL. 530.68  
V.C. 300'  
K = -1.18  
S.S.D. 382'



U.S. RTE 2 RELOCATION NO. 2  
PLAN & PROFILE

Palmer S.M. R. Kerr K. Adelberg  
PROJECT I 89-2 (3) 63  
1" = 50'  
Aug. 1957  
800

Row

43