

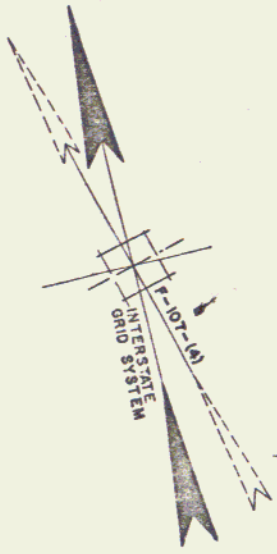
REMOVAL AND DISPOSAL OF PRESENT GUARD RAIL
514+08 - 516+36 RT ✓

THREE CABLE GUARD RAIL WITH STEEL POSTS
516+36 - 516+64 RT

STEEL BEAM GUARD RAIL
516+64 - 517+76 RT ✓

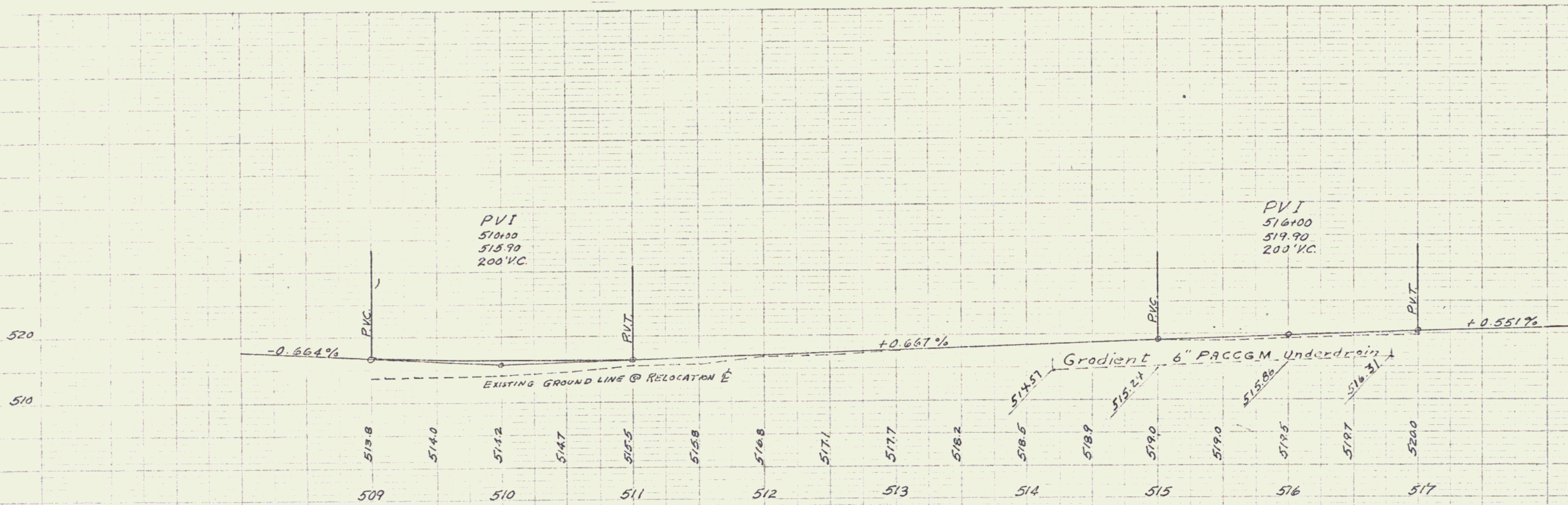
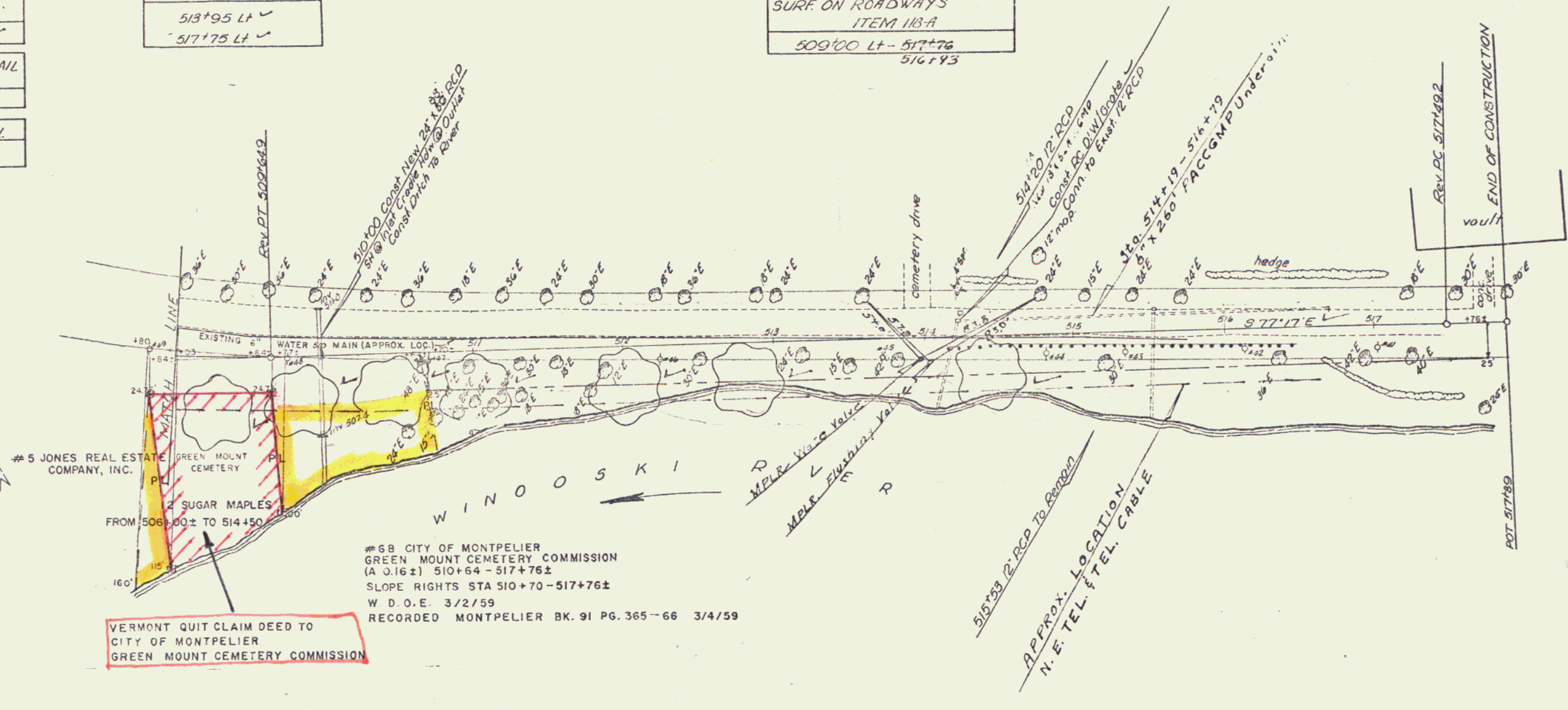
CONSTRUCT DRIVES
513+95 LT ✓
517+75 LT ✓

EXCAV. & REMOVAL OF ROAD SURF ON ROADWAYS
ITEM 113A
509+00 LT - 517+76
516+75



NOTE: BEARINGS SHOWN REFER TO THE VT. STATE CO-ORDINATE SYSTEM #107-4 (US RTE. 2) BEARING SYSTEM DIFFERS FROM VT. STATE CO-ORDINATE SYSTEM BY 15°04'

NOTE: — EXISTING 8" WATER MAIN
- - - PROPOSED ROUTE (NOT SHOWN) (TO BE APPROXIMATELY 5.0' SOUTHERLY OF SOUTHERLY EDGE OF PAVEMENT ON U.S. ROUTE 2 RELOCATION)



BERLIN-MONTPELIER-MIDDLESEX
US ROUTE 2 RELOCATION NO. 1
Project 189-2(3)
Sheet 62 of 847
Scale 1/4" = 1'