

REMOVAL AND DISPOSAL OF PRESENT GUARD RAIL
495+76-499+50 RT. ✓

THREE CABLE GUARD RAIL WITH STEEL POSTS
497+00-500+00 RT
511+59-509+00 RT

STEEL BEAM GUARD RAIL
500+00-501+18-50+00 RT
500+00-RT. ✓

CONSTRUCT DRIVES
506+67 LT ✓

STEEL GUIDE POSTS
495+12-495+92

EXCAV & REMOVAL OF ROAD SURF ON ROADWAYS ITEM 118A
495+00-500+00 LT
495+12

NOTE:
SEE MAIN LINE SHEET NO. 33

(PICHE)
TURGEON, 1964

WINDOSKI
Δ 14° 02' 30" RT ✓
D 4' ✓
R 1432.7 ✓
T 176.4 ✓
L 351.0 ✓
E 111 ✓
Bank 3/4 per ft ✓

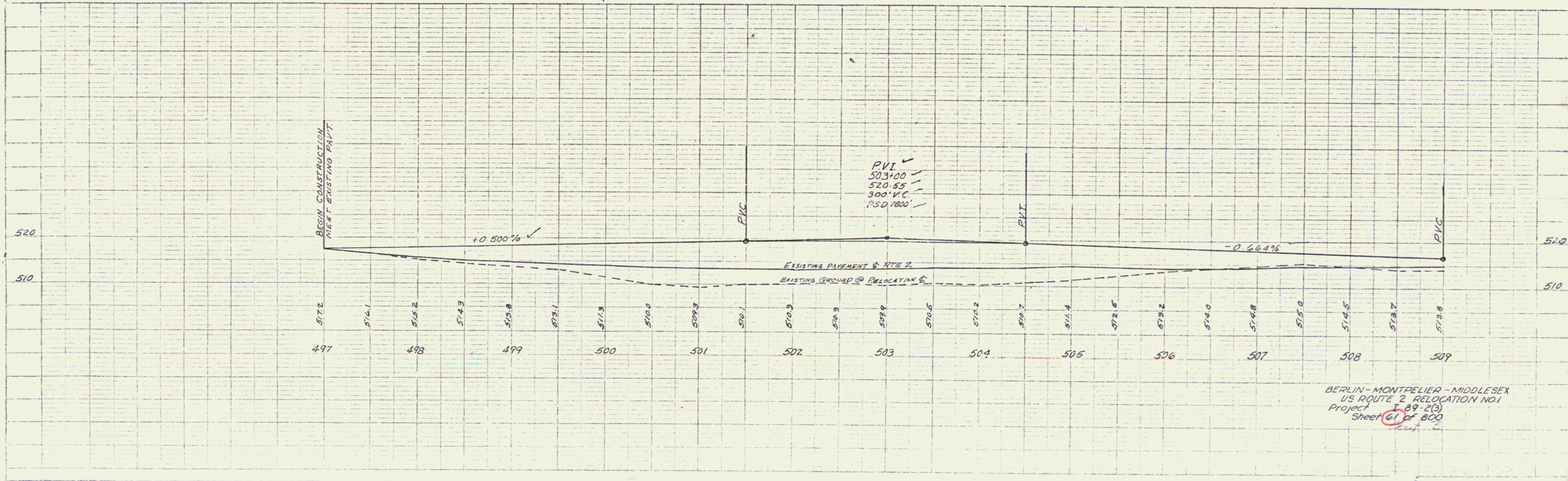
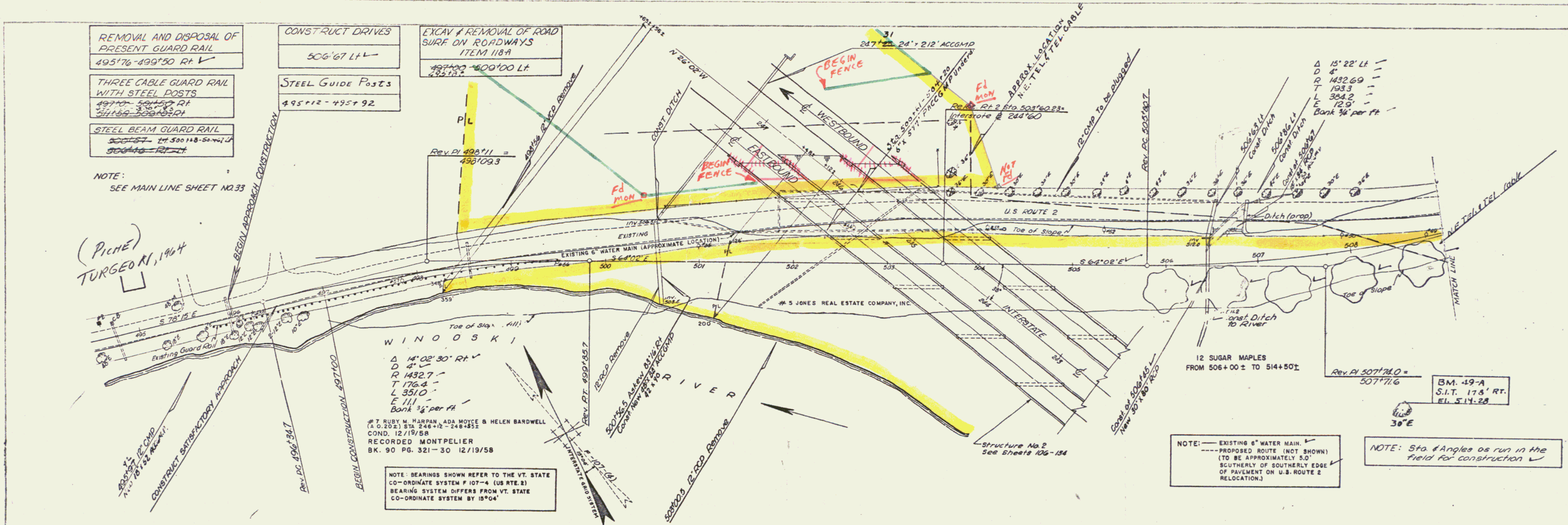
7 RUBY M. HARPAN, ADA MOYCE & HELEN BARDWELL
(A.O. 202) STA 246+12-248+55 ✓
COND. 12/19/58
RECORDED MONTPELIER
BK. 90 PG. 321-30 12/19/58

NOTE: BEARINGS SHOWN REFER TO THE VT. STATE CO-ORDINATE SYSTEM F 107-4 (US RTE. 2)
BEARING SYSTEM DIFFERS FROM VT. STATE CO-ORDINATE SYSTEM BY 15° 04'

NOTE: — EXISTING 6" WATER MAIN ✓
--- PROPOSED ROUTE (NOT SHOWN) (TO BE APPROXIMATELY 5.0' SOUTHERLY OF SOUTHERLY EDGE OF PAVEMENT ON U.S. ROUTE 2 RELOCATION)

NOTE: Sta & Angles as run in the field for construction ✓

PLER
5/87
3/07
Palmer
P.K.
NOTE: THIS SHEET WAS CHECKED BY
DATE: 12/11/58
BY: [Signature]



BERLIN-MONTPELIER-MIDDLESEX
US ROUTE 2 RELOCATION NO. 1
Project 1-89-2(3)
Sheet 61 of 800