

THREE CABLE GUARD RAIL WITH STEEL POST
 STA. 466+00 to 470+70 EB LI
 STA. 471+00 to 471+06 WB RT
 STA. 473+00 to 480+50 WB RT

DEMOLITION AND REMOVAL OF BUILDING ITEM, 566
 STA. 471+15 LT. NO. 32
 STA. 471+85 CL. NO. 33
 STA. 478+00 RT. NO. 34
 STA. 478+40 RT. NO. 35
 STA. 480+00 RT. NO. 36

DATES FOR POSITIVE LINE FENCE, ITEM 563-C
 STA. 480+00 RT.

51 A CENTRAL VERMONT RAILWAY, INC.
 (A. 11.8 ±) STA. 329+130 - 468+00
 COND. 12/31/58
 RECORDED MIDDLESEX BK. 29 PG. 94 - III 12/31/50
 CROSSING ESMT. 390+42
 RIGHTS TO DISCHARGE WATER FROM 8 CULVERTS INTO EXISTING CULVERTS STA. 329+64 - 468+29

R.M. No. 75
 R.R. Bridge Abutment
 Elev. 520.57

R.R. Bridge
 Clear Span 50.5'
 Clear Height 18.0'
 Elev. of Stringers 510.0

29 B CHARLES A. & FLORA E. GUYETTE
 (A. 2.0 ±) STA. 475+10 - 480+40
 W.D. 11/14/57
 RECORDED MIDDLESEX BK. 27 PG. 229 ABAA
 11/23/57

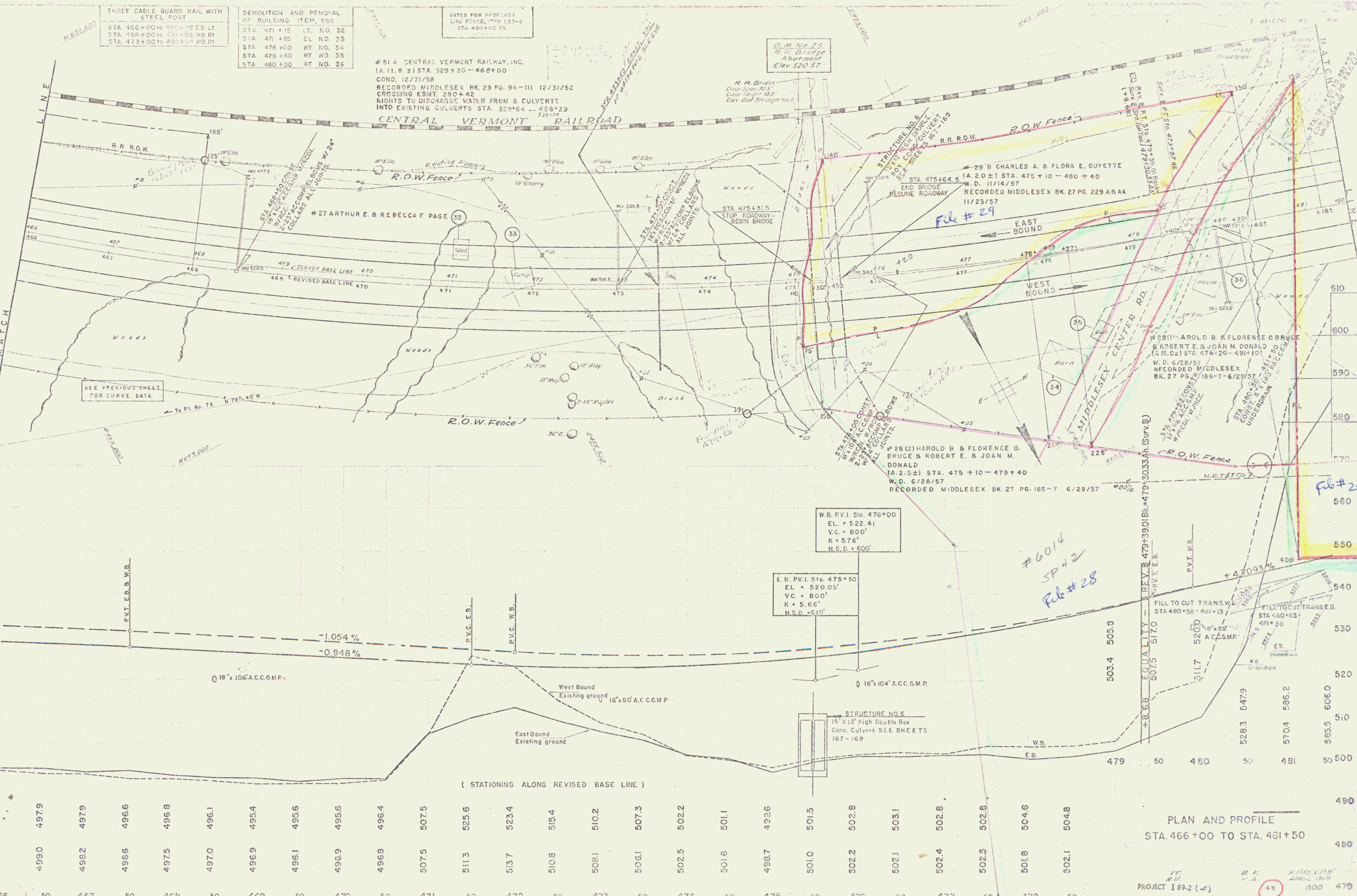
28 (1) AROLD B. & FLORENCE O. BRUCE
 & ROBERT E. & JOAN M. DONALD
 (A. 15.0 ±) STA. 476+20 - 491+10
 W.D. 6/28/57
 RECORDED MIDDLESEX BK. 27 PG. 186-7-6/29/57

28 (2) HAROLD B. & FLORENCE O. BRUCE & ROBERT E. & JOAN M. DONALD
 (A. 2.5 ±) STA. 475+10 - 479+40
 W.D. 6/28/57
 RECORDED MIDDLESEX BK. 27 PG. 186-7 6/29/57

W.B. P.V.I. Sta. 476+00
 EL. = 522.41
 V.C. = 800'
 K = 5.76'
 H.S.D. = 600'

E.B. P.V.I. Sta. 475+50
 EL. = 520.05'
 V.C. = 800'
 K = 5.66'
 H.S.D. = 610'

STRUCTURE NO. 6
 15' X 12' high Double Box
 Conc. Culvert. SEE SHEETS 167-169



PLAN AND PROFILE
 STA. 466+00 TO STA. 461+50

PROJECT 189-2 (4)
 APRIL 1958
 300 470