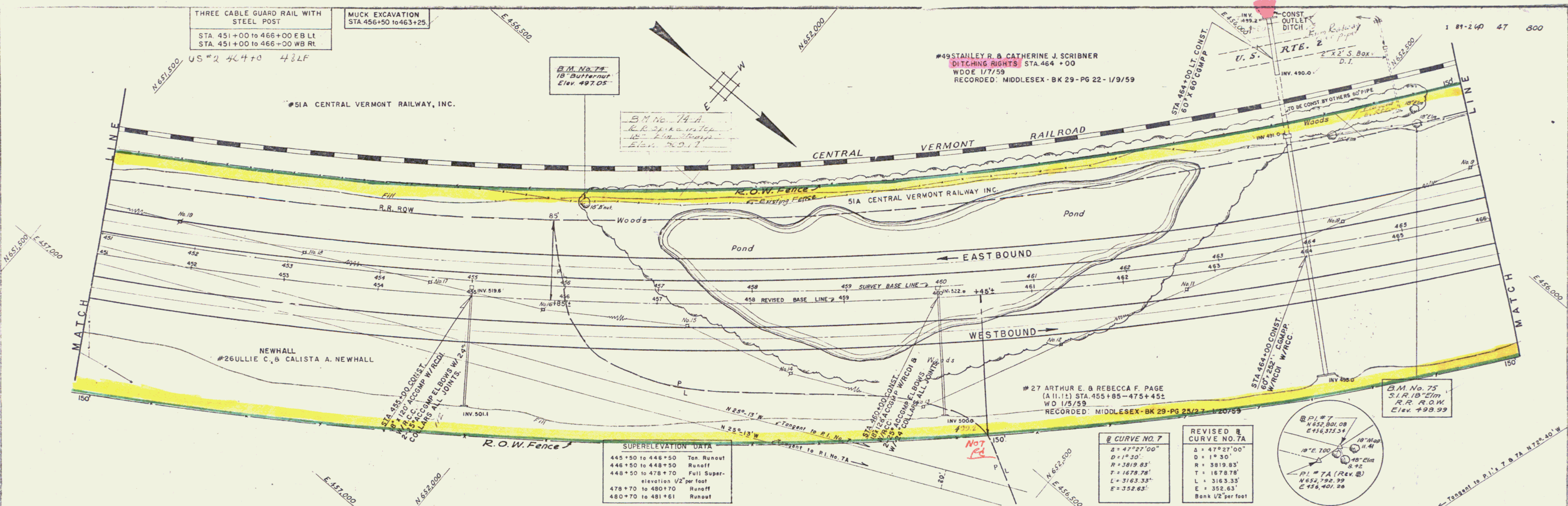


507/56
MAY 56
MARTIN
R.H.
B.S.

45/56
DEC 56
GOLLEP
GRANT
W.B.
A.J.



THREE CABLE GUARD RAIL WITH STEEL POST
STA. 451+00 to 466+00 E.B. LT.
STA. 451+00 to 466+00 W.B. RT.

MUCK EXCAVATION
STA. 456+50 to 463+25

B.M. No. 74
18" Butternut
Elev. 497.05

B.M. No. 74 A
R.R. 2 1/2" x 1 1/2" x 12"
18" Elm
Elev. 497.17

#49 STANLEY R. & CATHERINE J. SCRIBNER
DITCHING RIGHTS STA. 464+00
W.D. 1/7/59
RECORDED: MIDDLESEX - BK 29 - PG 22 - 1/9/59

STA. 464+00 LT. CONST.
60" x 60" C.G.M.P.P.

CONST. OUTLET DITCH
RTE. 2
2' x 2' 5" Box
D.I.

NEWHALL
#26 ULLIE C. & CALISTA A. NEWHALL

#27 ARTHUR E. & REBECCA F. PAGE
(A.I.I.) STA. 455+85 - 475+45
W.D. 1/5/59
RECORDED: MIDDLESEX - BK 29 - PG 25/27 - 1/20/59

B.M. No. 75
S.I.R. 18" Elm
R.R. R.O.W.
Elev. 498.99

SUPERELEVATION DATA

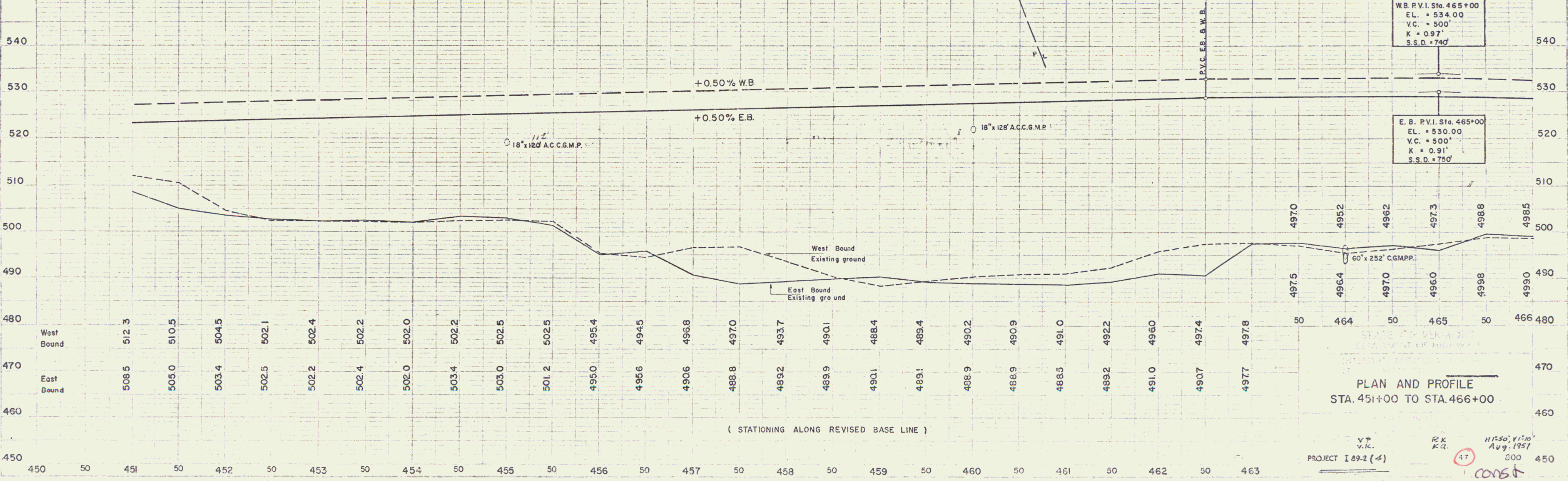
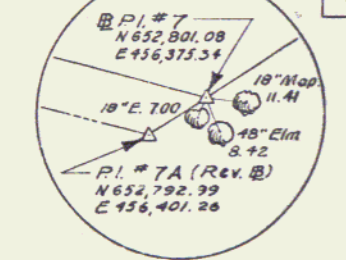
445+50 to 446+50	Tan. Runoff
446+50 to 448+50	Runoff
448+50 to 478+70	Full Super-elevation 1/2" per foot
478+70 to 480+70	Runoff
480+70 to 481+61	Runoff

B CURVE NO. 7

$\Delta = 47^{\circ}27'00''$
$D = 1^{\circ}30'$
$R = 3819.83'$
$T = 1678.78'$
$L = 3163.33'$
$E = 352.63'$

REVISED B CURVE NO. 7A

$\Delta = 47^{\circ}27'00''$
$D = 1^{\circ}30'$
$R = 3819.83'$
$T = 1678.78'$
$L = 3163.33'$
$E = 352.63'$
Bank 1/2" per foot



PLAN AND PROFILE
STA. 451+00 TO STA. 466+00

PROJECT I 89-2 (A)
V.P. V.K.
R.K. K.Q.
H.S. 1/1/50
Avg. 1957
300
450