

THREE CABLE GUARD RAIL WITH STEEL POST
 STA. 435+00 TO 436+04 EB LT.
 STA. 447+00 TO 451+00 EB LT.
 STA. 448+50 TO 451+00 WB RT.

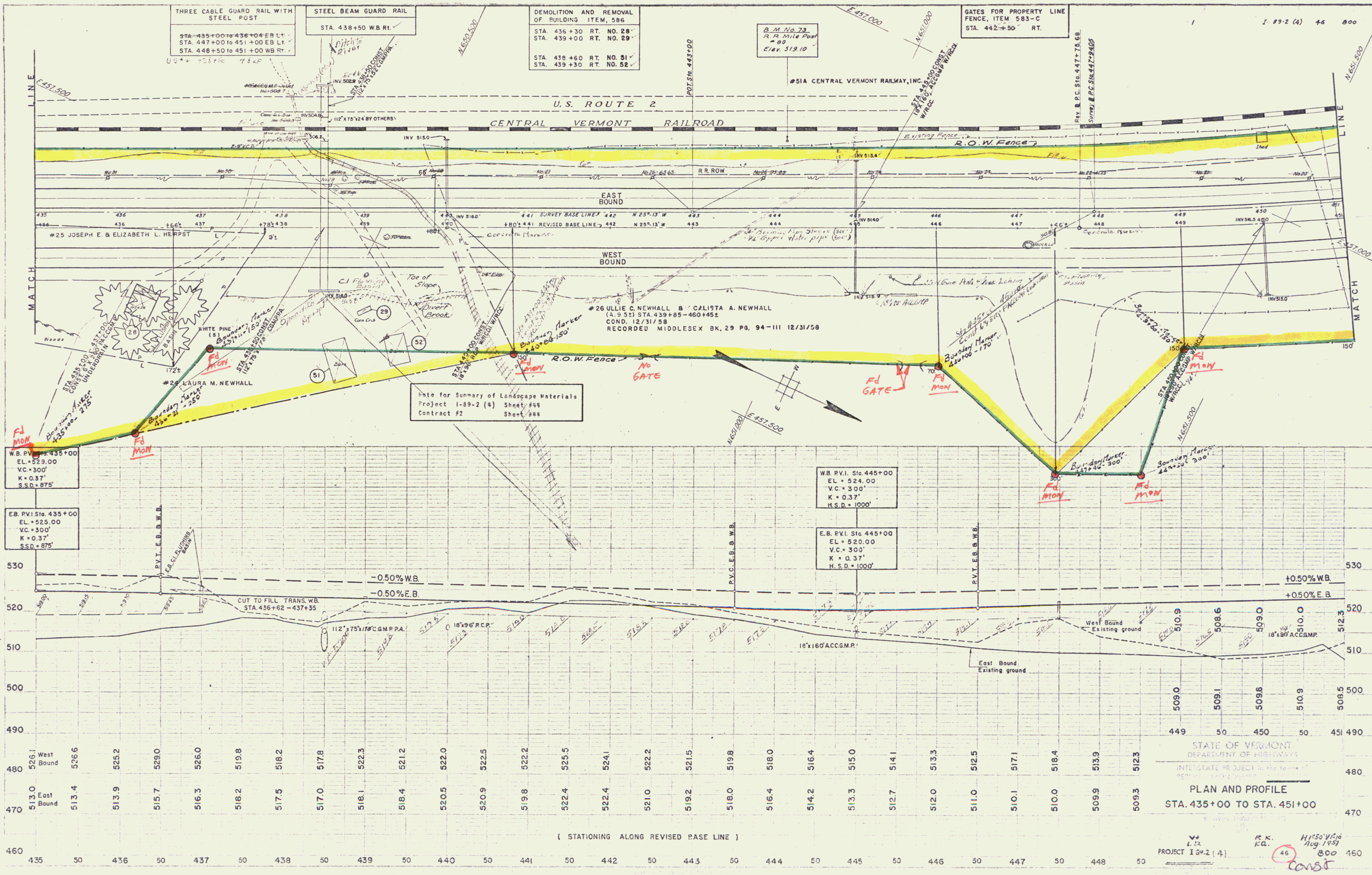
STEEL BEAM GUARD RAIL
 STA. 438+50 WB RT.

DEMOLITION AND REMOVAL OF BUILDING ITEM, 586
 STA. 436+30 RT. NO. 28
 STA. 439+00 RT. NO. 29
 STA. 438+60 RT. NO. 31
 STA. 439+30 RT. NO. 52

B.M. No. 73
 R.R. Mile Post
 = 80
 Elev. 519.10

GATES FOR PROPERTY LINE FENCE, ITEM 583-C
 STA. 442+50 RT.

I-89-2 (4) 46 800



Note for Summary of Landscape Materials
 Project I-89-2 (4) Sheet #44
 Contract #2 Sheet #44

W.B. P.V.I. Sta. 435+00
 EL. = 529.00
 V.C. = 300'
 K = 0.37'
 S.S.D. = 875'

E.B. P.V.I. Sta. 435+00
 EL. = 525.00
 V.C. = 300'
 K = 0.37'
 S.S.D. = 875'

W.B. P.V.I. Sta. 445+00
 EL. = 524.00
 V.C. = 300'
 K = 0.37'
 H.S.D. = 1000'

E.B. P.V.I. Sta. 445+00
 EL. = 520.00
 V.C. = 300'
 K = 0.37'
 H.S.D. = 1000'

STATE OF VERMONT
 DEPARTMENT OF HIGHWAYS
 INTERSTATE PROJECT in the name of
 PLAN AND PROFILE
 STA. 435+00 TO STA. 451+00

PROJECT I-89-2 (4)
 R.K. L.T. H. 1250' V. 10
 Aug. 1957
 46 800
 Const