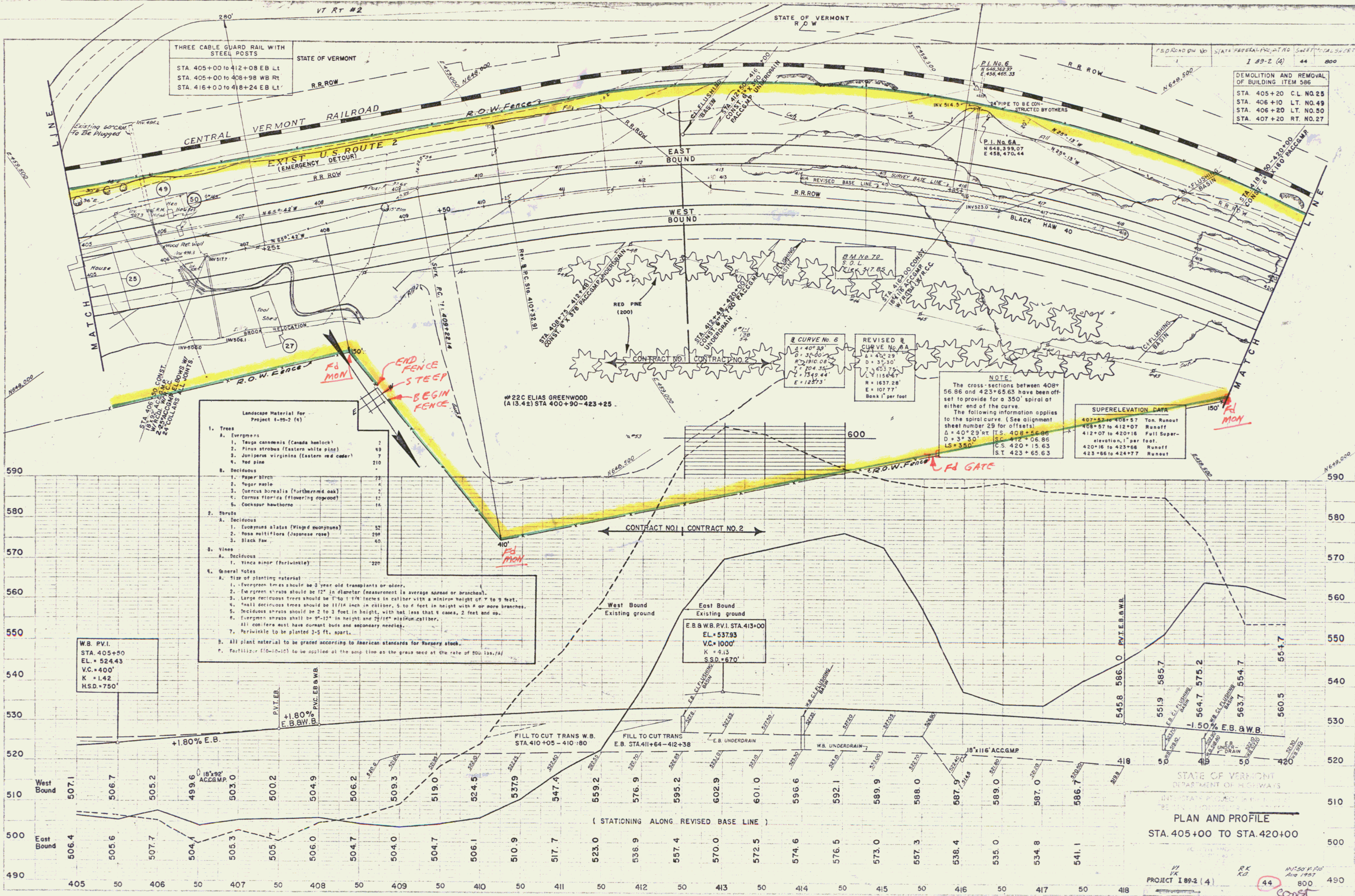


DEMOLITION AND REMOVAL OF BUILDING ITEM 586
 STA. 405+20 C.L. NO. 25
 STA. 406+10 L.T. NO. 49
 STA. 406+20 L.T. NO. 50
 STA. 407+20 R.T. NO. 27



THREE CABLE GUARD RAIL WITH STEEL POSTS
 STA. 405+00 TO 412+08 EB LT
 STA. 405+00 TO 408+98 WB RT
 STA. 416+00 TO 418+24 EB LT

Landscape Material For Project I-89-2 (4)

- Trees
 - Evergreens
 - Taxus canadensis (Canada hemlock) 2
 - Pinus strobus (Eastern white pine) 2
 - Juniperus virginiana (Eastern red cedar) 7
 - Red pine 210
 - Deciduous
 - Paper birch 23
 - Sugar maple 4
 - Quercus borealis (Northern oak) 2
 - Cornus florida (flowering dogwood) 12
 - Cockspur hawthorne 16
- Shrubs
 - Deciduous
 - Eucalyptus alatus (Winged eucalyptus) 52
 - Rosa multiflora (Japanese rose) 298
 - Blackhaw 40
- Vines
 - Deciduous
 - Vincetoxicum (Periwinkle) 220
- General Notes
 - Size of planting material
 - Evergreen trees should be 3 year old transplants or older.
 - Evergreen shrubs should be 12" in diameter (measurement is average spread or branches).
 - Large deciduous trees should be 1" to 1 1/4" inches in caliper with a minimum height of 7 to 9 feet.
 - Small deciduous trees should be 1 1/2" inch in caliper, 5 to 6 feet in height with 4 or more branches.
 - Deciduous shrubs should be 2 to 3 feet in height, with not less than 4 canes, 2 feet and up.
 - Evergreen shrubs shall be 9"-12" in height and 2 1/2" minimum caliper.
 - All conifers must have dormant buds and secondary needles.
 - Periwinkle to be planted 3-5 ft. apart.
 - All plant material to be graded according to American standards for Nursery stock.
 - Fertilizer (10-10-10) to be applied at the same time as the grass seed at the rate of 50 lbs./A.

RECURVE No. 6
 Δ = 40° 29'
 D = 30.60'
 R = 187.28'
 E = 107.77'
 Bank 1" per foot

NOTE:
 The cross-sections between 408+56.86 and 423+65.63 have been offset to provide for a 350' spiral at either end of the curve.
 The following information applies to the spiral curve. (See alignment sheet number 29 for offsets)
 Δ = 40° 29' R.T.S. 408+56.86
 D = 30.60' C.S. 412+06.86
 LS = 350' S.T. 423+65.63

SUPERELEVATION DATA

407+52 to 408+57	Tan. Runoff
408+57 to 412+07	Runoff
412+07 to 420+16	Full Super-elevation, 1" per foot.
420+16 to 423+68	Runoff
423+68 to 424+77	Runoff

W.B. P.V.I.
 STA. 405+50
 EL. = 524.43
 VC = 400'
 K = 1.42
 H.S.D. = 750'

East Bound Existing ground
 E.B. & W.B. P.V.I. STA. 413+00
 EL. = 537.93
 VC = 1000'
 K = 4.13
 H.S.D. = 670'