

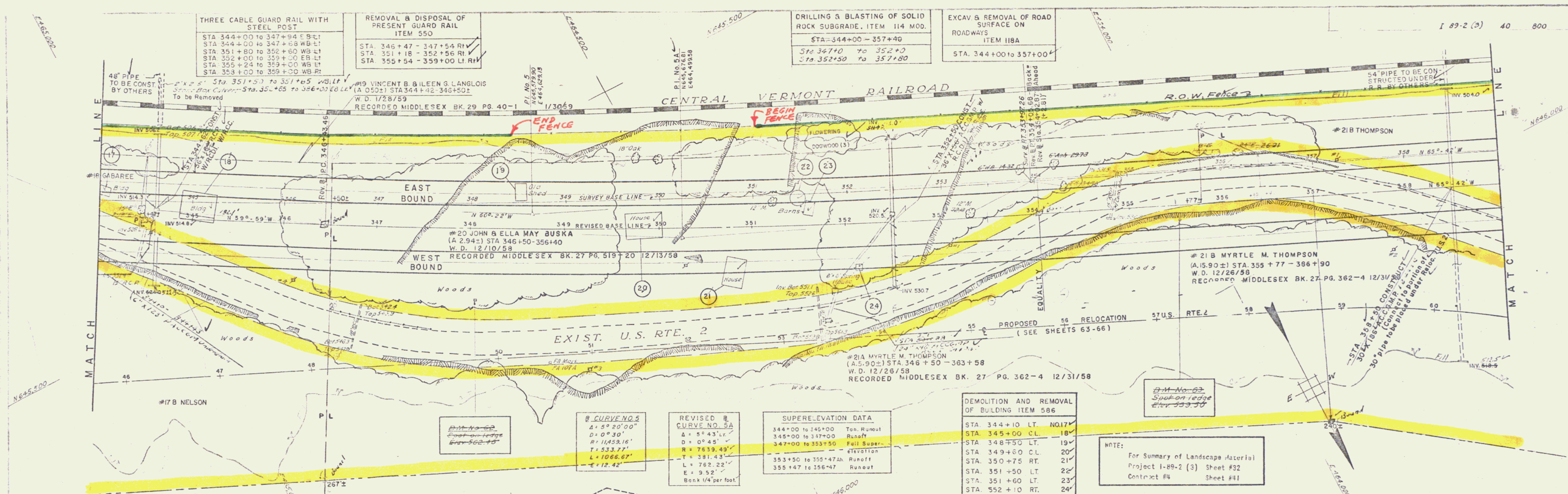
THREE CABLE GUARD RAIL WITH STEEL POST
 STA 344+00 to 347+94 E.B.
 STA 344+00 to 347+94 W.B.
 STA 351+80 to 352+50 W.B.
 STA 352+00 to 359+00 W.B.
 STA 355+24 to 359+00 W.B.
 STA 353+00 to 359+00 W.B.

REMOVAL & DISPOSAL OF PRESENT GUARD RAIL ITEM 550
 STA. 346+47 - 347+54 RW
 STA. 351+18 - 352+56 RW
 STA. 355+54 - 359+00 LT.RH

DRILLING & BLASTING OF SOLID ROCK SUBGRADE. ITEM 114 MOD.
 STA-344+00 - 357+40
 STA 347+00 to 352+00
 STA 352+50 to 357+80

EXCAV & REMOVAL OF ROAD SURFACE ON ROADWAYS ITEM 118A
 STA. 344+00 to 357+00

189-2 (3) 40 800



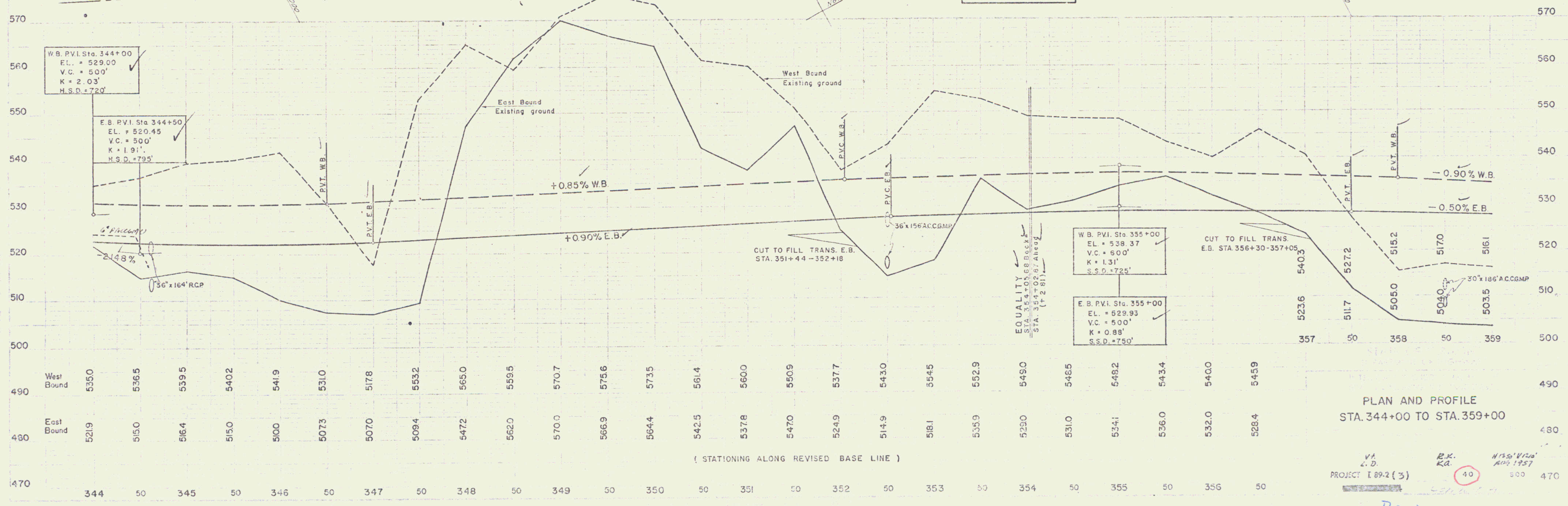
RECORDED MIDDLESEX BK. 29 PG. 40-1 1/3069
 #19 VINCENT B. & ILEEN S. LANGLOIS (A. 0521) STA 344+42 - 346+50
 W.D. 12/28/59
 #20 JOHN & ELLA MAY BUSKA (A. 2942) STA 346+50 - 356+40
 W.D. 12/10/58
 #21A MYRTLE M. THOMPSON (A. 5902) STA 346+50 - 363+58
 W.D. 12/26/58
 RECORDED MIDDLESEX BK. 27 PG. 362-4 12/31/58
 #21B MYRTLE M. THOMPSON (A. 5902) STA 355+77 - 386+90
 W.D. 12/26/58
 RECORDED MIDDLESEX BK. 27 PG. 362-4 12/31/58
 #17 B NELSON
 #21 B THOMPSON
 #21 B MYRTLE M. THOMPSON

DEMOLITION AND REMOVAL OF BUILDING ITEM 586
 STA. 344+10 LT. NO. 17
 STA. 345+00 CL. 18
 STA. 348+50 LT. 19
 STA. 349+60 CL. 20
 STA. 350+75 RT. 21
 STA. 351+50 LT. 22
 STA. 351+60 LT. 23
 STA. 552+10 RT. 24

REVISIONS
 CURVE NO. 5
 Δ = 5° 20' 00"
 D = 0° 30'
 R = 11453.16'
 T = 533.27'
 L = 1066.62'
 E = 9.52'
 Bank 1/4" per foot

SUPERELEVATION DATA
 344+00 to 345+00 Top Runout
 345+00 to 347+00 Runoff
 347+00 to 353+50 Full Super.
 353+50 to 355+47M Runoff
 355+47 to 356+47 Runoff

NOTE:
 For Summary of Landscape Material
 Project 1-89-2 (3) Sheet #32
 Contract #4 Sheet #41



W.B. P.V.I. Sta. 344+00
 EL. = 529.00
 V.C. = 500'
 K = 2.03
 H.S.D. = 720'

E.B. P.V.I. Sta. 344+50
 EL. = 520.45
 V.C. = 500'
 K = 1.91
 H.S.D. = 795'

W.B. P.V.I. Sta. 355+00
 EL. = 538.37
 V.C. = 600'
 K = 1.31
 S.S.D. = 725'

E.B. P.V.I. Sta. 355+00
 EL. = 529.93
 V.C. = 500'
 K = 0.88
 S.S.D. = 750'

PLAN AND PROFILE
 STA. 344+00 TO STA. 359+00

PROJECT 1-89-2 (3) 40 800

Row

22