

THREE CABLE GUARD RAIL WITH STEEL POSTS
Sta. 333+40 - 334+70 WBL
Sta. 338+75 - 341+05 WBL
Sta. 338+75 - 341+05 EBL

THREE CABLE GUARD RAIL WITH STEEL POST
Sta. 329+00 to 330+60 EBL
Sta. 333+80 to 334+76 WBL
Sta. 338+40 to 344+00 WBL
Sta. 338+50 to 344+00 EBL

REMOVAL & DISPOSAL OF PRESENT GUARD RAIL ITEM 550
Sta. 329+02 - 333+02 LI
Sta. 330+02 - 330+56 LI
Sta. 333+58 - 336+08 LI
Sta. 334+03 - 334+65 LI
Sta. 337+03 - 341+06 LI
Sta. 339+41 - 341+10 LI

B.M. No. 60
Spot on ledge
Elev. 536.80

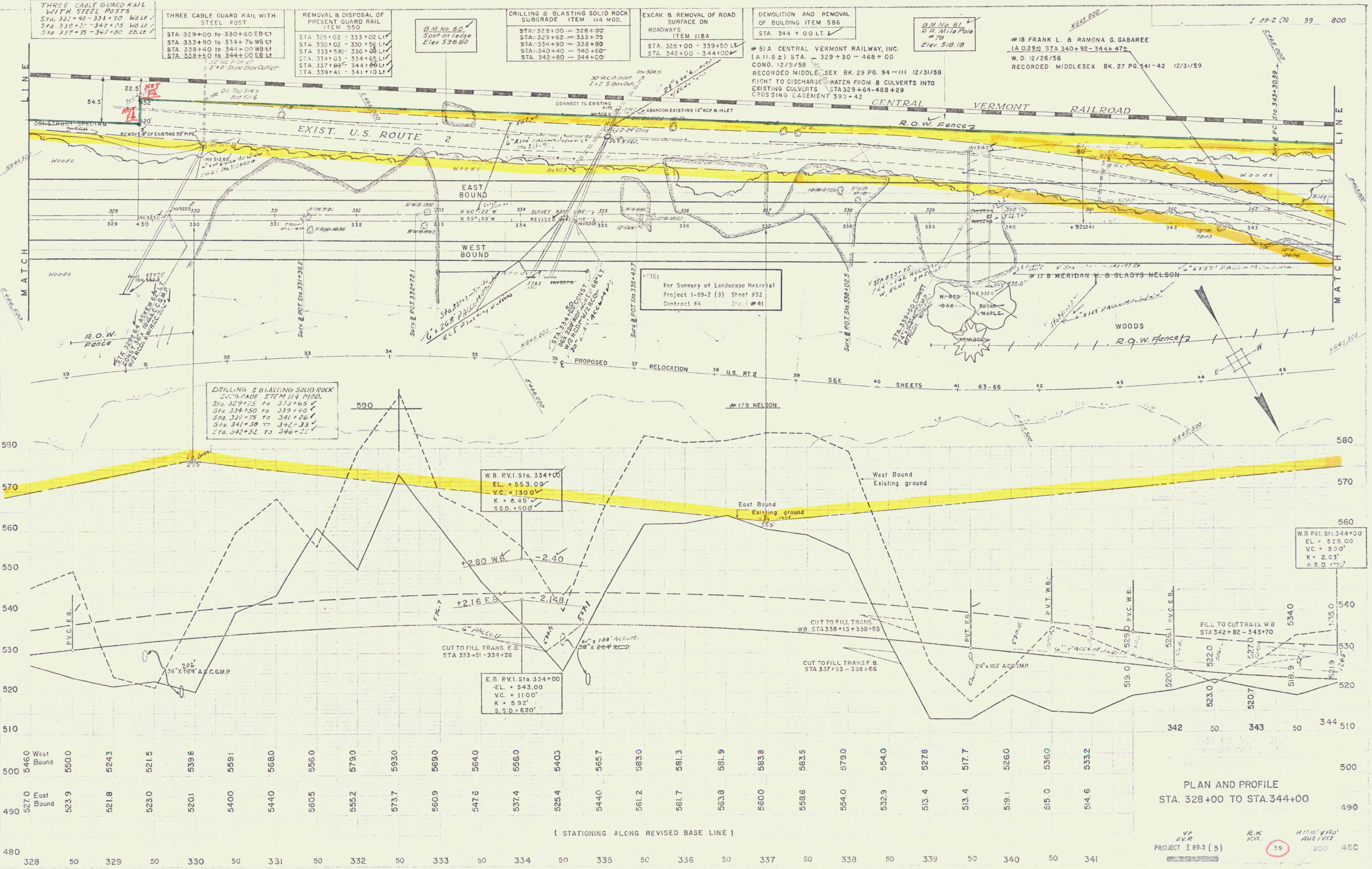
DRILLING & BLASTING SOLID ROCK SUBGRADE ITEM 114 MOD.
Sta. 328+00 - 328+80
Sta. 329+62 - 333+75
Sta. 334+90 - 338+80
Sta. 340+40 - 340+60
Sta. 342+80 - 344+00

EXCAV. & REMOVAL OF ROAD SURFACE ON ROADWAYS ITEM 118A
Sta. 328+00 - 339+50 LE
Sta. 342+00 - 344+00

DEMOLITION AND REMOVAL OF BUILDING ITEM 586
Sta. 344+00 LT

B.M. No. 61
R.R. Utility Pole
#78
Elev. 518.18

#18 FRANK L. & RAMONA G. GABAREE
[A.0.29] STA. 340+92 - 344+47
W.D. 12/26/58
RECORDED MIDDLESEX BK. 27 P. 541-42 12/31/59



PLAN AND PROFILE
STA. 328+00 TO STA. 344+00

Row

21