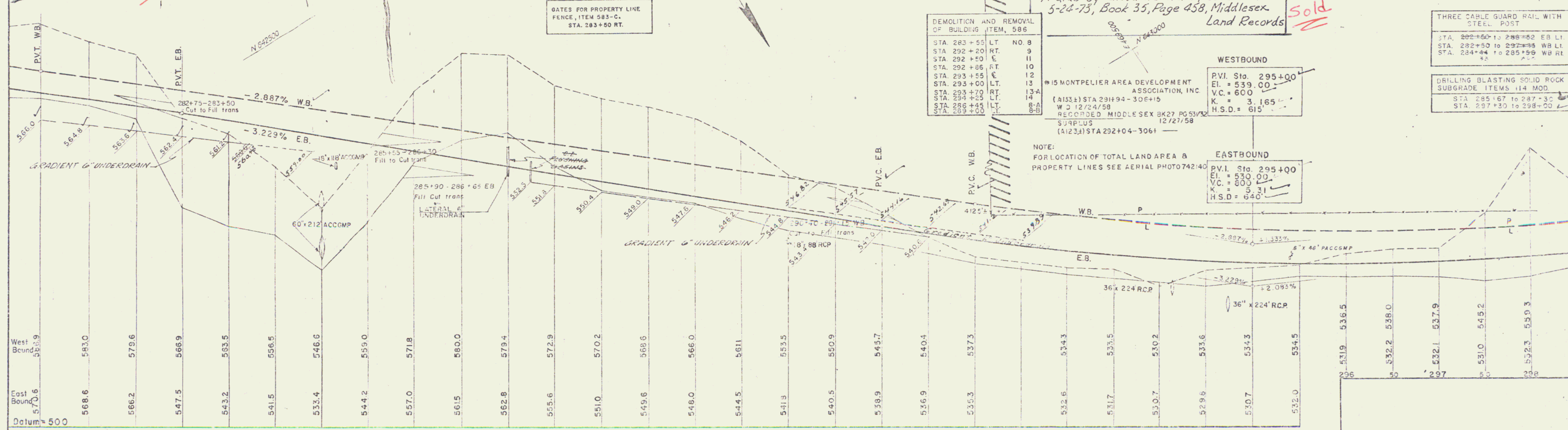
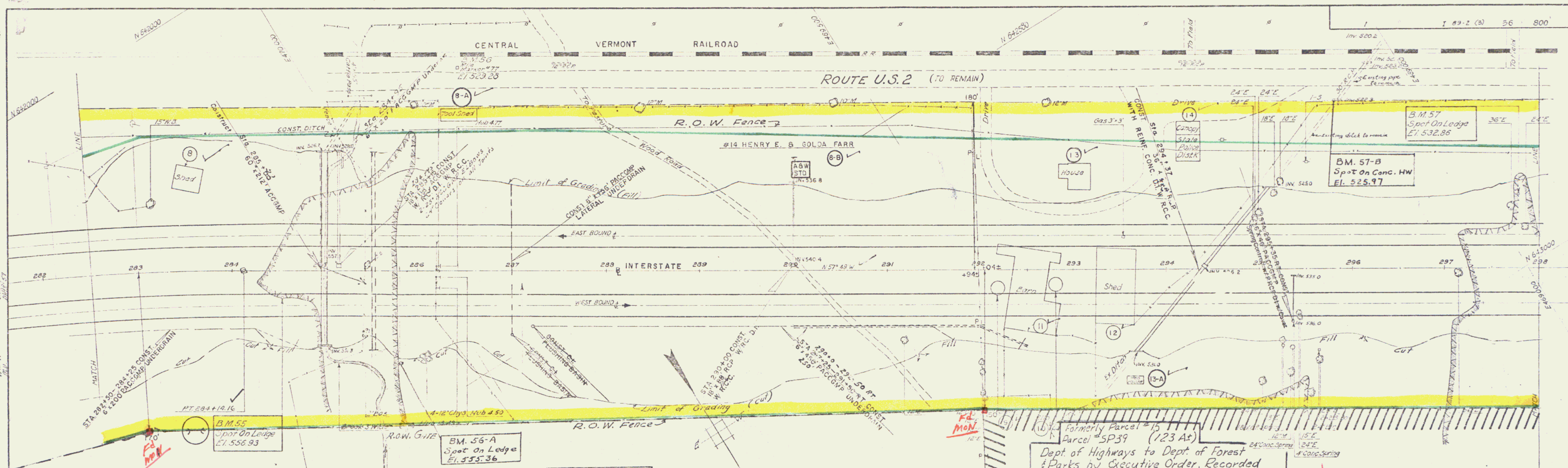


SPRUILINGS  
M.D.  
B.S.  
JUN 27

ROUSSEAU & GALLER  
ENGRS  
M.D.  
JUN 27



DEMOLITION AND REMOVAL OF BUILDING ITEM, 586

STA	LT	NO.
283+55	RT.	8
292+20	RT.	9
292+50	E	11
292+85	RT.	10
293+55	E	12
293+00	LT.	13
293+70	RT.	13-A
294+25	LT.	14
296+45	LT.	8-A
298+00	LT.	8-B

Formerly Parcel #15 Parcel #5P39 (123 A) Dept. of Highways to Dept. of Forest & Parks by Executive Order, Recorded 5-26-73, Book 35, Page 458, Middlesex Land Records **Sold**

NOTE: FOR LOCATION OF TOTAL LAND AREA B PROPERTY LINES SEE AERIAL PHOTO 742140

WESTBOUND  
P.V.I. Sta. 295+00  
E.L. = 539.00  
V.C. = 600  
K = 3.165  
H.S.D. = 615

EASTBOUND  
P.V.I. Sta. 295+00  
E.L. = 530.00  
V.C. = 800  
K = 3.31  
H.S.D. = 640

THREE CABLE GUARD RAIL WITH STEEL POST  
STA. 282+50 TO 288+50 EB LT.  
STA. 282+50 TO 292+50 WB LT.  
STA. 284+44 TO 285+56 WB RT.

DRILLING BLASTING SOLID ROCK SUBGRADE ITEMS 114 MOD  
STA. 285+67 TO 287+30  
STA. 297+30 TO 298+00

PLAN AND PROFILE  
STA. 282+50 TO STA. 298+00