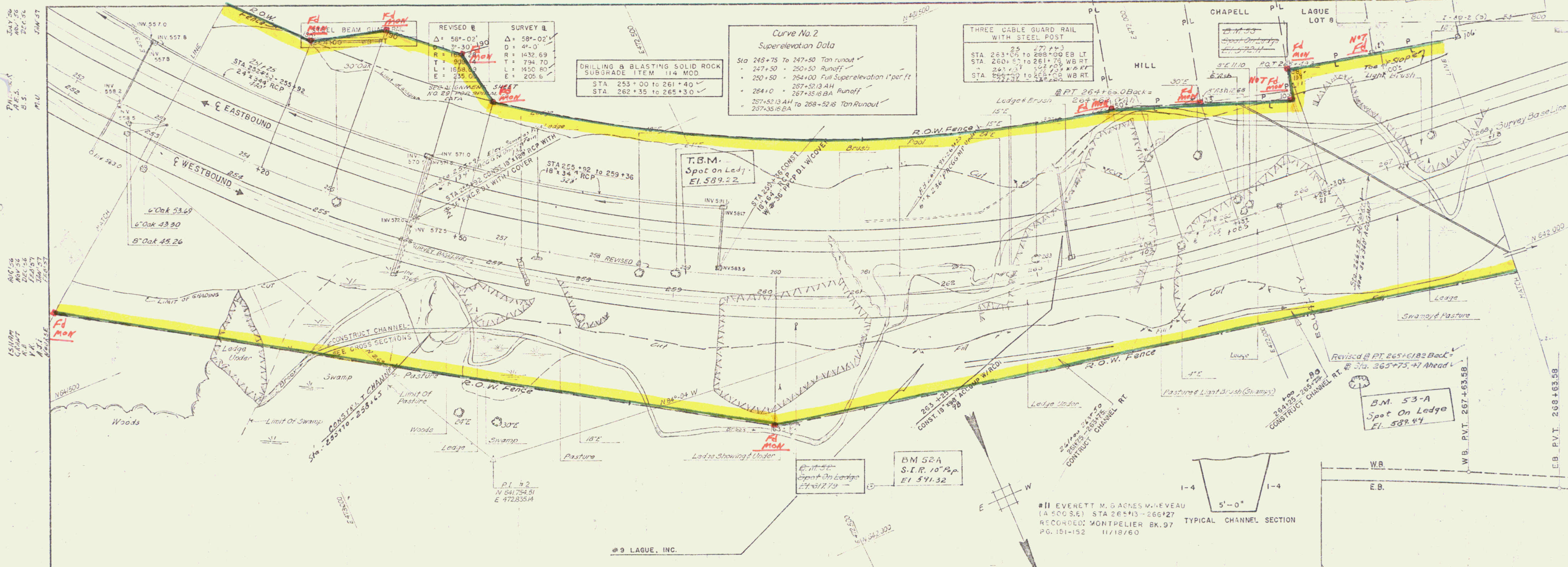


9 LAGUE, INC.



REVISED		SURVEY	
Δ = 58°-02'	Δ = 58°-02'	Δ = 58°-02'	Δ = 58°-02'
D = 3°-30' 19.0"	D = 4°-0'	D = 4°-0'	D = 4°-0'
R = 165.14	R = 1432.69	R = 1432.69	R = 1432.69
T = 99.12	T = 794.70	T = 794.70	T = 794.70
L = 1658.89	L = 1450.80	L = 1450.80	L = 1450.80
E = 235.00	E = 205.6	E = 205.6	E = 205.6

Curve No. 2
Super-elevation Data

- Sta 245+75 to 247+50 Tan runoff
- 247+50 - 250+50 Runoff
- 250+50 - 254+00 Full Super-elevation 1" per ft
- 254+00 - 257+36 Runoff
- 257+36 to 258+52.46 Tan Runoff

DRILLING & BLASTING SOLID ROCK
SUBGRADE ITEM 114 MOD.

- STA 253+00 to 261+40
- STA. 262+35 to 265+30

THREE CABLE GUARD RAIL
WITH STEEL POST

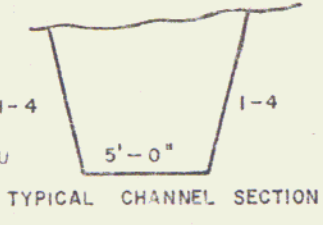
- Sta 253+00 to 259+00 EB LT
- Sta 260+50 to 261+75 WB RT
- Sta 262+35 to 265+30 WB RT
- Sta 257+36 to 258+52 WB RT

T.B.M.
Spot On Ledge
El. 589.22

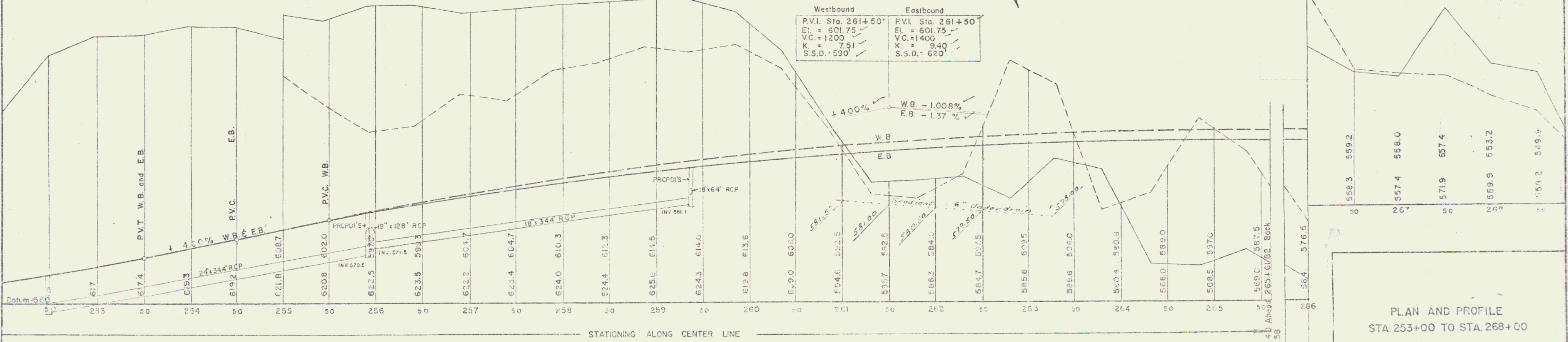
B.M. 53-A
Spot On Ledge
El. 589.44

B.M. 52A
S.I.R. 10" P.P.
El. 591.32

#11 EVERETT M. & AGNES M. REVEAU
(A 500 S.E.) STA 265+13 - 266+27
RECORDED: MONTPELIER BK. 97
PG. 151-152 11/18/60



Westbound		Eastbound	
P.V.I. Sta. 261+50'	El. = 601.75	P.V.I. Sta. 261+50'	El. = 601.75
V.C. = 1200'	K = 7.51	V.C. = 1400'	K = 9.40
S.S.D. = 590'		S.S.D. = 620'	



PLAN AND PROFILE
STA. 253+00 TO STA. 268+00

PROJECT 1892 (3)
P.L.'S REVISED