

OFF PAPER  
SEE SHEET C1

THREE CABLE GUARD RAIL  
WITH STEEL POST  
Sta. 246+76 to 248+36 EB LI.  
Sta. 245+44 to 246+82 WB RI.

#8 CHARLES A. & KATHLEEN L. PICHE  
(A.O.31) STA 249+87-252+80  
W.D. 6/17/57  
RECORDED: MONTPELIER - BK 84-PG 385/86-6/20/57

REVISED CURVE #2  
D = 35'-30"  
R = 1637.28  
T = 908.14  
L = 1658.09  
E = 235.00

SURVEY B CURVE #2  
Δ = 58°-02'  
D = 49'-0"  
R = 1432.69  
T = 794.70  
L = 1450.80  
E = 205.65

#6 CITY OF MONTPELIER  
GREEN MOUNT CEMETERY COMMISSION  
(A.0141) STA 251+50-253+00  
W.D. 4/15/59  
RECORDED: MONTPELIER BK 91-PG 387-8 4/14/59

#52 CAPITAL HEIGHTS ASSOCIATES  
RIGHT OF WAY STA 252+00  
COND. 12/19/58  
RECORDED: MONTPELIER BK 90-PG 321/30-12/19/58

#6 A CITY OF MONTPELIER  
GREEN MOUNT CEMETERY COMMISSION  
(A-4.5) STA 244+63-252+632  
W.D. 3/2/59  
RECORDED: MONTPELIER - BK 91  
PG 363/64-3/4/59

THREE CABLE MEDIAN GUARD RAIL  
AT BRIDGE  
STA. 245+00

NOTE:  
FOR SUPPLY OF LANDSCAPE MATERIAL  
Project I-89-2 (3) Sheet #32

#5 - JONES REAL ESTATE CO. INC.  
(A-4.5) STA 239+00-246+461  
COND. 12/19/58  
RECORDED: MONTPELIER - BK 90-PG 321/30-12/19/58

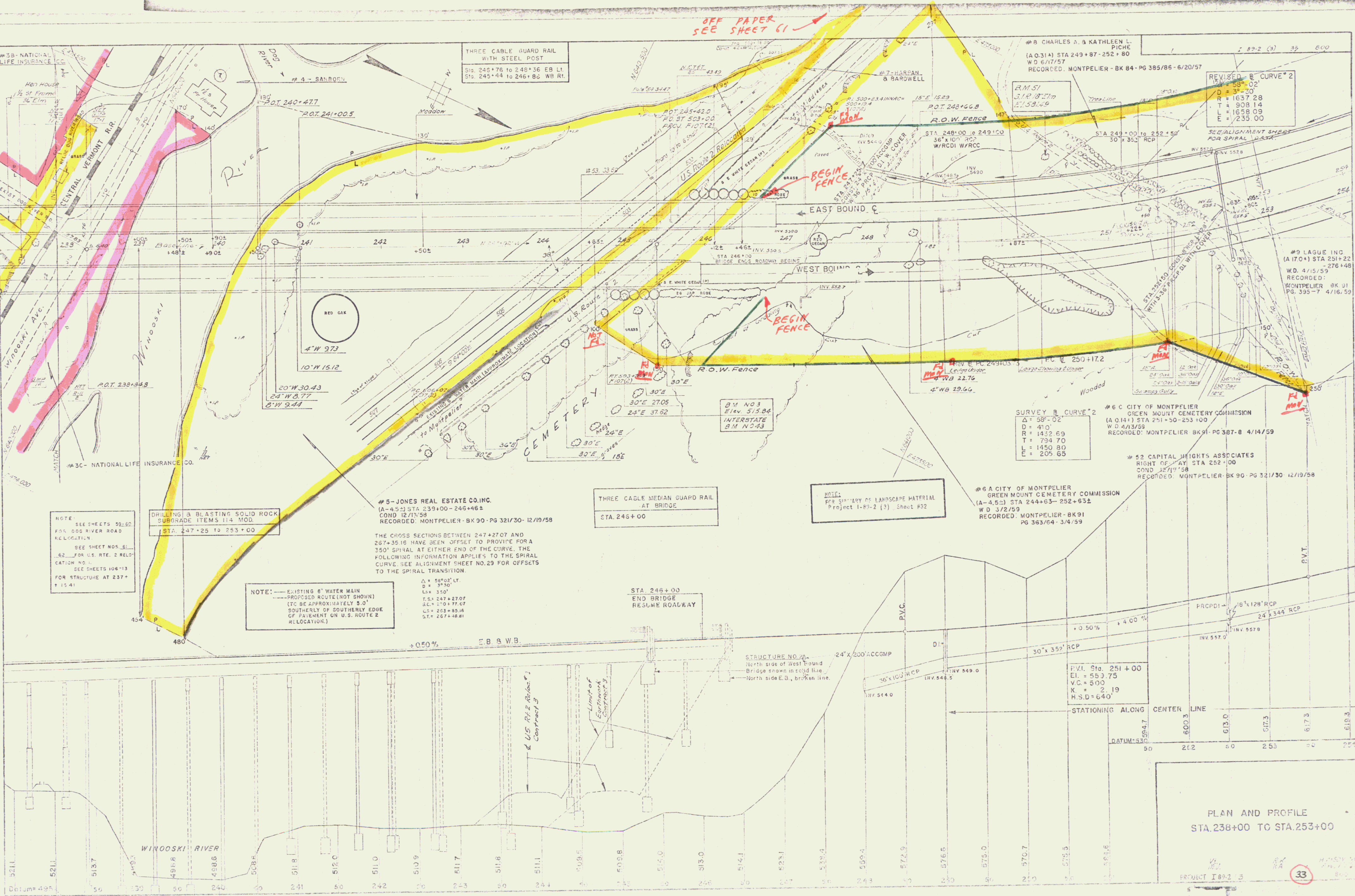
THE CROSS SECTIONS BETWEEN 247+27.07 AND  
267+35.16 HAVE BEEN OFFSET TO PROVIDE FOR A  
350' SPIRAL AT EITHER END OF THE CURVE. THE  
FOLLOWING INFORMATION APPLIES TO THE SPIRAL  
CURVE. SEE ALIGNMENT SHEET NO. 29 FOR OFFSETS  
TO THE SPIRAL TRANSITION.

NOTE: ——— EXISTING 6" WATER MAIN  
———— PROPOSED ROUTE (NOT SHOWN)  
(TO BE APPROXIMATELY 5.0'  
SOUTHERLY OF SOUTHERLY EDGE  
OF PAVEMENT ON U.S. ROUTE 2  
RELOCATION.)

NOTE  
SEE SHEETS 52-60  
FOR DOD RIVER ROAD  
RELOCATION.  
SEE SHEET NOS. 51-  
62 FOR U.S. RTE. 2 RELO-  
CATION NO. 1.  
SEE SHEETS 106-13  
FOR STRUCTURE AT 237+  
15.41

DRILLING & BLASTING SOLID ROCK  
SUBGRADE ITEMS 114 MOD.  
STA. 247+25 TO 253+00

Δ = 58°02' LT.  
D = 3°30'  
Ls = 350'  
T.S. = 247+27.07  
S.C. = 250+77.67  
Ls = 263+85.14  
S.T. = 267+48.81



PLAN AND PROFILE  
STA. 238+00 TO STA. 253+00