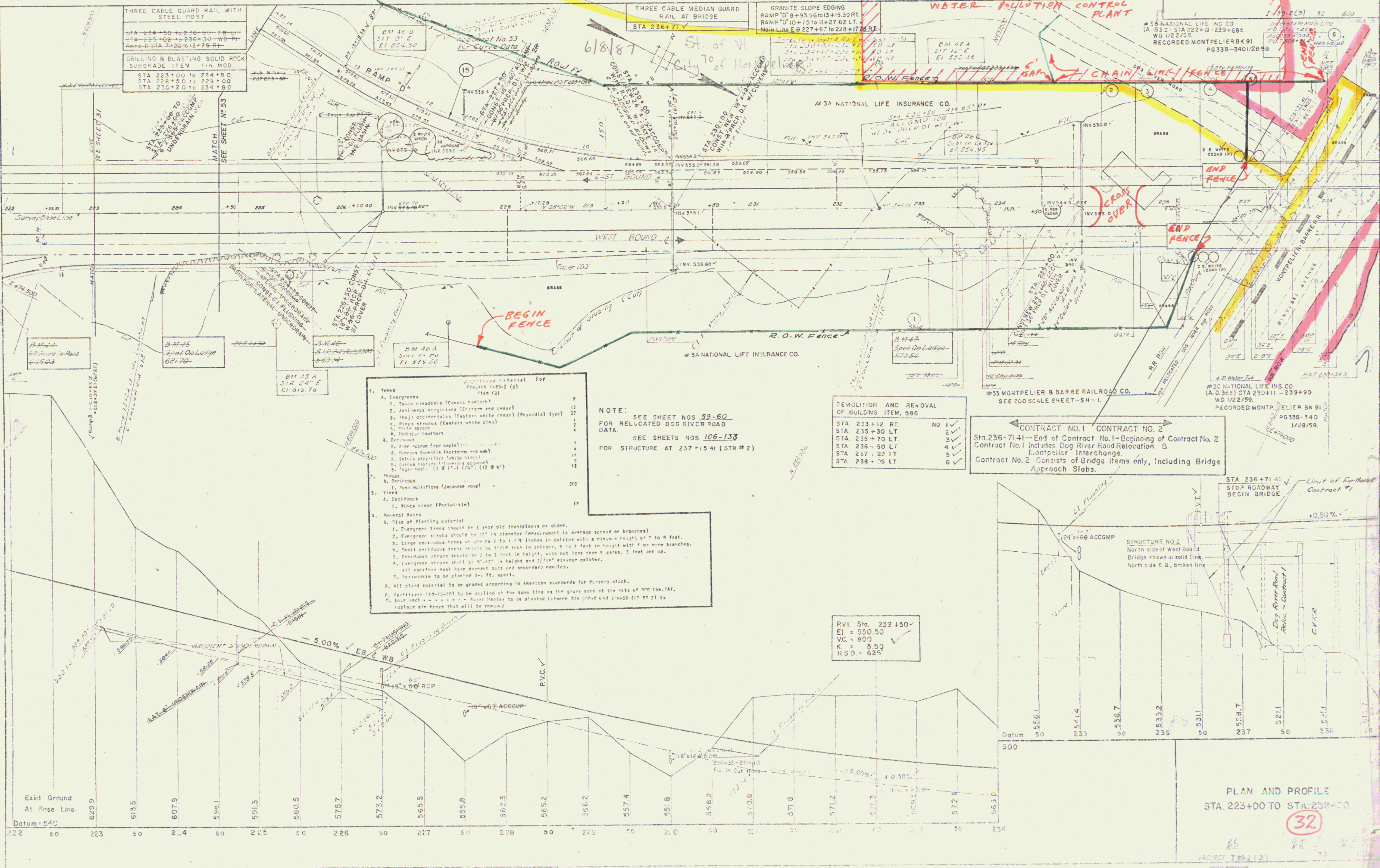


DATE: 11/22/55
 DRAWN BY: M.S.
 CHECKED BY: M.S.
 PROJECT: 189-2 (3)

SP 48 CITY OF MONTPELIER
 WATER POLLUTION CONTROL PLANT



THREE CABLE GUARD RAIL WITH STEEL POST
 STA 234+50 TO 236+90 RB LT
 STA 235+02 TO 236+30 WB RT
 RAMP TO STA 236+10 TO 237+00

THREE CABLE MEDIAN GUARD RAIL AT BRIDGE
 STA 236+71

GRANITE SLOPE EDGING
 RAMP TO 8+93.0 TO 13+15.3 RT
 RAMP TO 10+75 TO 11+27.6 LT
 Main Line E B 227+67 TO 228+17.6 RT

#58 NATIONAL LIFE INS CO
 (A. 531) STA 222+61-239+68
 WD 1/22/55
 RECORDED MONTPELIER BK 91
 PG 338-340/28-59

#3A NATIONAL LIFE INSURANCE CO.

#3C NATIONAL LIFE INS CO
 (A. 0361) STA 230+11 - 239+90
 WD 1/22/59
 RECORDED MONTPELIER BK 91
 PG 338-340
 1/28/59

CONTRACT NO. 1 CONTRACT NO. 2
 Sta. 236-71.41 - End of Contract No. 1 - Beginning of Contract No. 2
 Contract No. 1 Includes Dog River Road Relocation & Montpelier Interchange
 Contract No. 2 Consists of Bridge Items only, including Bridge Approach Slabs.

Planting Material For Project 189-2 (3) Item 581

1. Trees	7
A. Evergreens	13
1. Thuja canadensis (Canada hemlock)	7
2. Juniperus virginiana (Eastern red cedar)	32
3. Thuja occidentalis (Eastern white cedar) (Pyramidal type)	2
4. Pinus strobus (Eastern white pine)	4
5. White spruce	1
6. Red spruce	1
B. Deciduous	1
1. Acer rubrum (Red maple)	1
2. Quercus borealis (Northern red oak)	1
3. Betula papyrifera (White birch)	1
4. Cornus florida (Flowering dogwood)	1
5. Sugar maple (1 @ 1" x 1 1/4", 12 @ 1 1/2")	13
2. Shrubs	1
A. Perennials	203
1. Rosa multiflora (Japanese rose)	203
3. Vines	1
A. Deciduous	1
1. Vitica flor (Periwinkle)	1
4. General Notes	
A. Size of planting material	
1. Evergreen trees should be 1 1/2" in diameter (measurement to average spread or branches)	
2. Evergreen shrubs should be 1 1/2" in diameter in collar with a minimum height of 7 to 8 feet.	
3. Large deciduous trees should be 1 to 1 1/2" in diameter in collar with a minimum height of 7 to 8 feet.	
4. Small deciduous trees should be 1 1/2" in diameter in collar with a minimum height of 7 to 8 feet.	
5. Deciduous shrubs should be 2 to 3 feet in height, with not less than 4 canes, 2 feet apart.	
6. Evergreen shrubs shall be 9"-12" in height and 2 1/2" minimum diameter.	
7. Periwinkle to be planted 3-5 ft. apart.	
B. All plant material to be graded according to American standards for Nursery stock.	
C. Fertilizer (10-10-10) to be applied at the same time as the grass seed at the rate of 300 lbs./A.	
D. Four inch - - - - - Sugar Maples to be planted between Sta 209+00 and 214+50 (10 FT ST) to replace elm trees that will be removed.	

NOTE: SEE SHEET NOS 59-60 FOR RELOCATED DOG RIVER ROAD DATA. SEE SHEETS NOS 106-133 FOR STRUCTURE AT 237+15.41 (STR. #2)

DEMOLITION AND REMOVAL OF BUILDING ITEM, 586

STA 233+12 RT	NO 1	✓
STA 235+30 LT	2	✓
STA 235+70 LT	3	✓
STA 236+50 LT	4	✓
STA 237+20 LT	5	✓
STA 238+05 LT	6	✓

PVI Sta. 232+50
 EI = 550.50
 VC = 800
 X = 8.50
 HSD = 625

PLAN AND PROFILE
 STA. 223+00 TO STA. 238+00

32

9