

* DENOTES STAGE 2 ITEMS

Three Circle Guard Rail
w/ LT. Chain Posts
1mm 538
NB 2496+02 - 2498+00 LT.

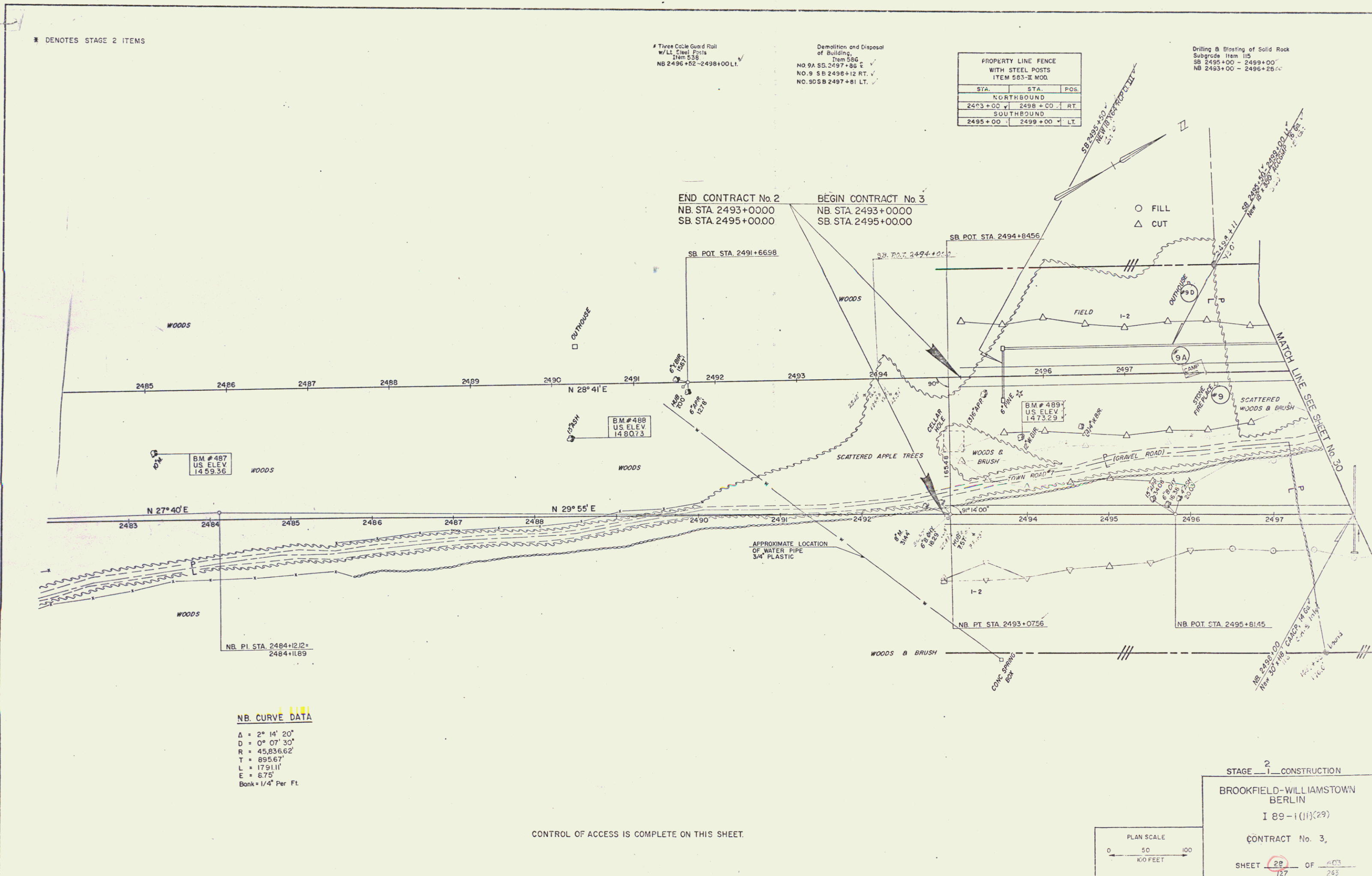
Demolition and Disposal
of Building
Item 586
NO. 9A SB 2497+86 C
NO. 9 SB 2498+12 RT. C
NO. 9DSB 2497+81 LT. C

PROPERTY LINE FENCE WITH STEEL POSTS ITEM 583-E MOD.		
STA.	STA.	POS.
NORTHBOUND		
2493+00	2498+00	RT.
SOUTHBOUND		
2495+00	2499+00	LT.

Drilling & Blasting of Solid Rock
Subgrade Item 115
SB 2495+00 - 2499+00
NB 2493+00 - 2496+25 C

END CONTRACT No. 2
NB. STA. 2493+00.00
SB. STA. 2495+00.00

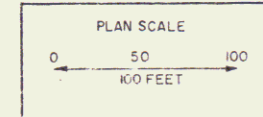
BEGIN CONTRACT No. 3
NB. STA. 2493+00.00
SB. STA. 2495+00.00



NB. CURVE DATA

Δ = 2° 14' 20"
D = 0° 07' 30"
R = 45,836.62'
T = 895.67'
L = 1791.11'
E = 875'
Bank = 1/4" Per Ft.

CONTROL OF ACCESS IS COMPLETE ON THIS SHEET.



STAGE 2 CONSTRUCTION
BROOKFIELD-WILLIAMSTOWN
BERLIN
I 89-1(11)(29)
CONTRACT No. 3,
SHEET 28 OF 263

PORTER, CHURCH & ARMSTRONGS
CONSULTING ENGINEERS, INC.

114