

\* DENOTES STAGE 2 ITEMS

Stone Fill For Slope Protection  
(Light Type) Item 212  
N.R. 2482+50 LT. (Outlet Ditch)

Drilling & Blasting of Solid Rock, Item 114  
SB 2484+00 - 2485+50

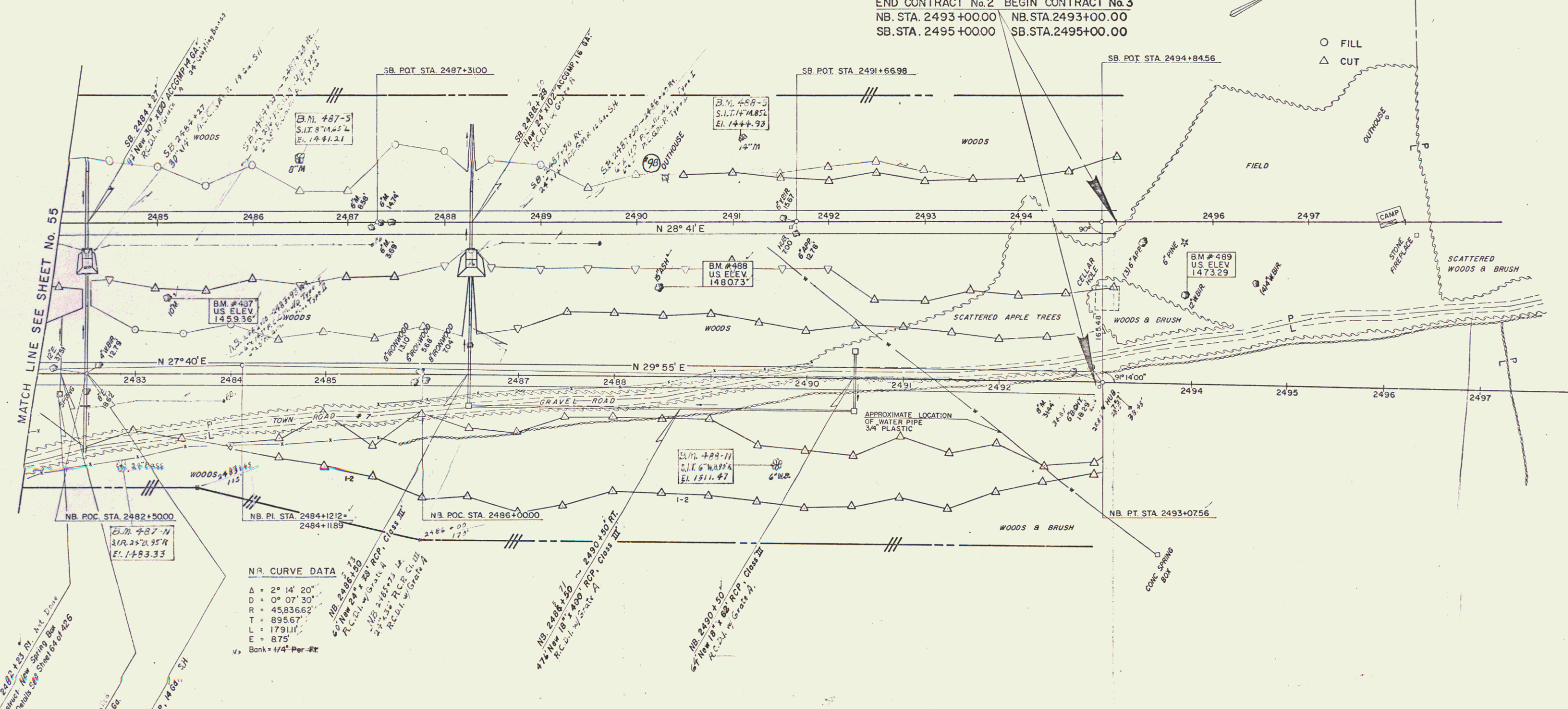
Drilling & Blasting of Solid Rock Subgrade, Item 115  
NB 2482+75 - 2493+00  
SB 2484+00 - 2495+00

Three Cable Guard Rail  
w/ Light Steel Posts,  
Item 336  
NB 2482+00 - 2484+54 LT.  
SB 2484+00 - 2489+22 LT.

DEMOLITION & DISPOSAL OF BUILDING  
ITEM 386  
#9B - SB - 2490+23 LT.

PROPERTY LINE FENCE WITH STEEL POSTS ITEM 563-E MOD.		
STA.	STA.	POS.
NORTHBOUND		
2482+00	2493+00	RT.
SOUTHBOUND		
2484+00	2495+00	LT.

END CONTRACT No. 2 BEGIN CONTRACT No. 3  
NB STA. 2493+00.00 NB STA. 2493+00.00  
SB STA. 2495+00.00 SB STA. 2495+00.00



**N.R. CURVE DATA**

Δ = 2° 14' 20"
D = 0° 07' 30"
R = 45,836.62'
T = 895.67'
L = 1791.11'
E = 8.75'

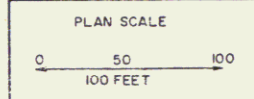
Bank = 1/4" Per Ft

NB. 2482+23 RT. Acc. Drive  
Change to New Spring Box  
For Details See Sheet 26 of 26

NB. 2482+23 RT. ACCUM. 16 Ga.  
New 8" x 78" ACCUM. 16 Ga.

NB. 2482+50 RT.  
New 10" x 92" ACCUM. 14 Ga. SH

CONTROL OF ACCESS IS COMPLETE ON THIS SHEET



STAGE 2 CONSTRUCTION

BROOKFIELD-WILLIAMSTOWN  
BERLIN

I 89-1(11)(29)

CONTRACT No. 2

SHEET 57 OF 426  
263

PORTER, OBELEN & ARMSTRONG  
INC. ENGINEERS  
BURLINGTON, VT.