

* DENOTES STAGE 2 ITEMS

Plank Guard Rail
Item 540 / 82
NB. 2146 + 85 RT. 40' L.F.
SB. 2152 + 00 LT. 40' L.F.

* Three Cable Guard Rail
w/ Lt. St. Posts
Item 538
NB. 2142 + 00 - 2148 + 08 RT.
NB. 2142 + 00 - 2150 + 43 LT.
SB. 2142 + 00 - 2150 + 04 RT. 2.5
SB. 2142 + 00 - 2151 + 52 LT. 1.5

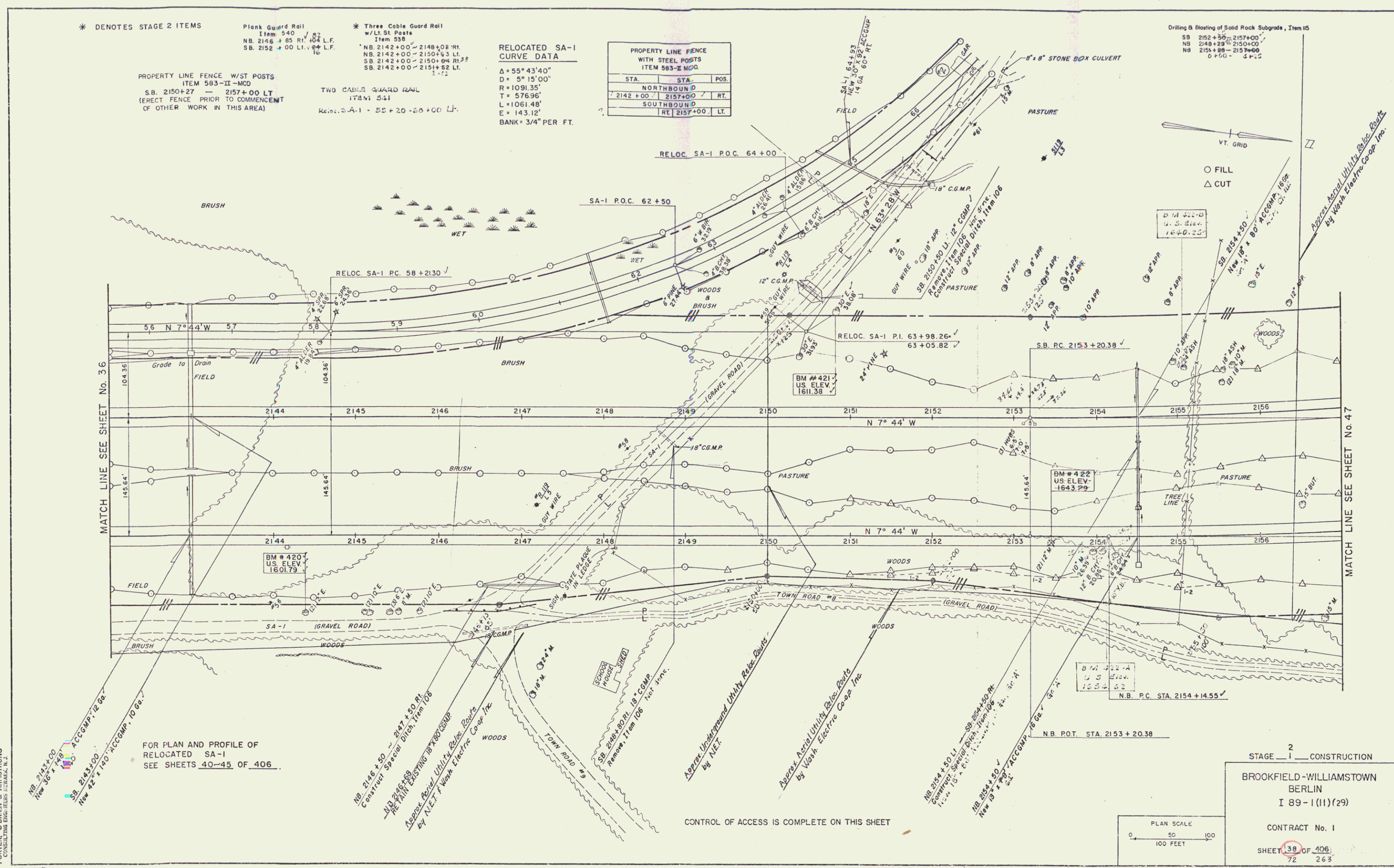
RELOCATED SA-1
CURVE DATA
Δ = 55° 43' 40"
D = 5° 15' 00"
R = 1091.35'
T = 576.96'
L = 1061.48'
E = 143.12'
BANK = 3/4" PER FT.

STA.	STA.	POS.
NORTHBOUND		
2142 + 00	2157 + 00	RT.
SOUTHBOUND		
RT	2157 + 00	LT.

PROPERTY LINE FENCE W/ST POSTS
ITEM 583-II-MCD
S.B. 2150+27 - 2157+00 LT.
(ERECT FENCE PRIOR TO COMMENCEMENT
OF OTHER WORK IN THIS AREA)

TWO CABLE GUARD RAIL
ITEM 541
Reloc. SA-1 - 52 + 20 - 28 + 00 LT.

Drilling & Blasting of Solid Rock Subgrade, Item 115
SB 2152+50 - 2157+00
NB 2148+29 - 2150+00
NB 2151+88 - 2157+00
0 + 00 - 5 + 25



MATCH LINE SEE SHEET No. 36

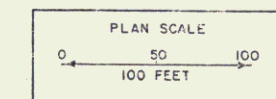
MATCH LINE SEE SHEET No. 47

PORTER, OSBORN & ARMSTRONG
CONSULTING ENGINEERS
1000 BROADWAY
NEW YORK, N.Y.

FOR PLAN AND PROFILE OF
RELOCATED SA-1
SEE SHEETS 40-45 OF 406.

NB. 2146 + 50 - 2147 + 20 RT.
Contract Special Ditch Item 106
N.B. 2145 + 00
N.B. 2145 + 00
Approx. Aerial Utility Cables Route
by N.E.T. of Wash. Electric Coop. Inc.

CONTROL OF ACCESS IS COMPLETE ON THIS SHEET



STAGE 2 CONSTRUCTION

BROOKFIELD-WILLIAMSTOWN
BERLIN
I 89 - 1(11)(29)

CONTRACT No. 1

SHEET 38 OF 406
72 263

79