

* DENOTES STAGE 2 ITEMS

Plank Guard Rail Item 540
NB 2121+10RT 56LF
Reloc SA-1 2114+00 - 2118+00 RT.
2114+00 - 2116+00 LT.
2116+00 - 2117+19 RT.

* Three Cable Guard Rail
w/Lt St. Posts
Item 538

NOTE: POSSIBLE GRAVE
PARCEL NO. 7
CONTRACTOR TO EXERCISE DUE CARE
DURING CONSTRUCTION AND IF BODY
IS FOUND DUE PROCESS OF LAW IS
TO BE FOLLOWED.
(REFER TO SPECIAL AGREEMENTS)

PROPERTY LINE FENCE WITH STEEL POSTS ITEM 503-II MOD.		
STA.	STA.	POS.
NORTHBOUND		
2114+00	2128+00	RT.
SOUTHBOUND		
Reloc SA-1 2114+00	2128+00	LT.

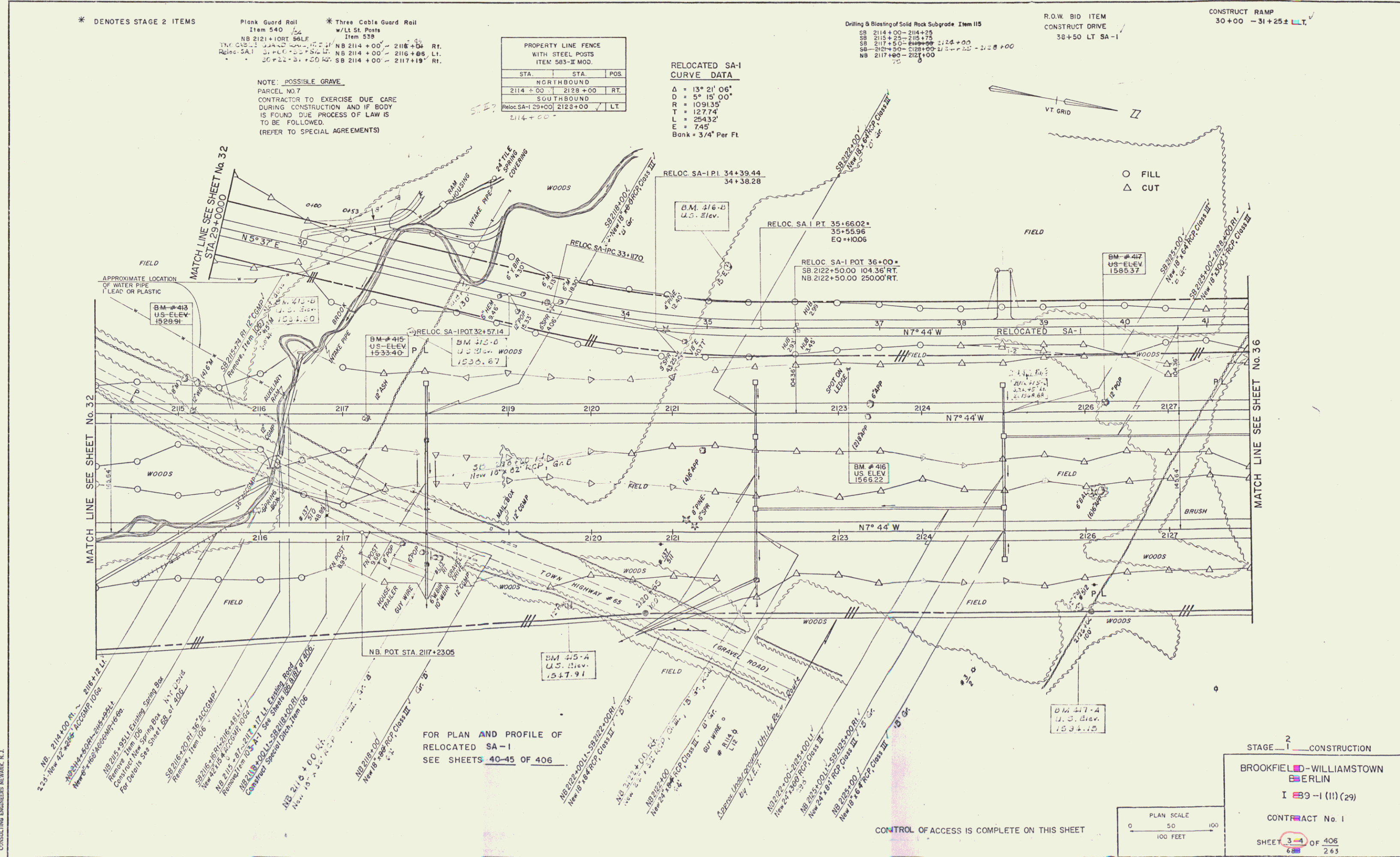
RELOCATED SA-1 CURVE DATA

$\Delta = 13^\circ 21' 06"$
 $D = 5^\circ 15' 00"$
 $R = 109135'$
 $T = 12774'$
 $L = 25432'$
 $E = 745'$
Bank = $3/4"$ Per Ft

Drilling & Blasting of Solid Rock Subgrade Item 115

R.O.W. BID ITEM
CONSTRUCT DRIVE
38+50 LT SA-1

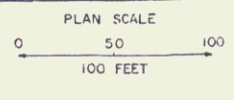
CONSTRUCT RAMP
30+00 - 31+25 ± LT.



PORTER, O'BRIEN & ARMSTRONG
CONSULTING ENGINEERS NEWARK, N.J.

FOR PLAN AND PROFILE OF
RELOCATED SA-1
SEE SHEETS 40-45 OF 406

CONTROL OF ACCESS IS COMPLETE ON THIS SHEET



STAGE 2 CONSTRUCTION

BROOKFIELD-WILLIAMSTOWN
BERLIN

I 89-1 (11) (29)

CONTRACT No. 1

SHEET 34 OF 406
68 263