

- INDEX OF SHEETS
- 1 TITLE SHEET
 - 2-6 TYPICAL SECTIONS
 - 7-8 ROW DETAIL SHEETS
 - 9-40 PLAN & PROFILE SHEETS

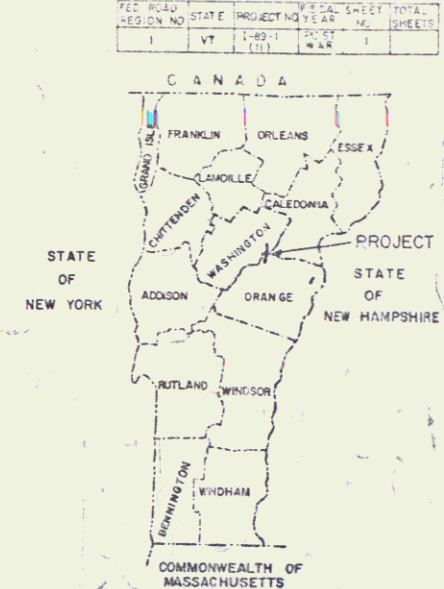
M

STATE OF VERMONT
DEPARTMENT OF HIGHWAYS

PROPOSED IMPROVEMENT
INTERSTATE PROJECT
TOWNS OF BROOKFIELD, WILLIAMSTOWN, AND BERLIN
COUNTIES OF ORANGE AND WASHINGTON
INTERSTATE ROUTE 89
WHITE RIVER JCT. - MONTPELIER

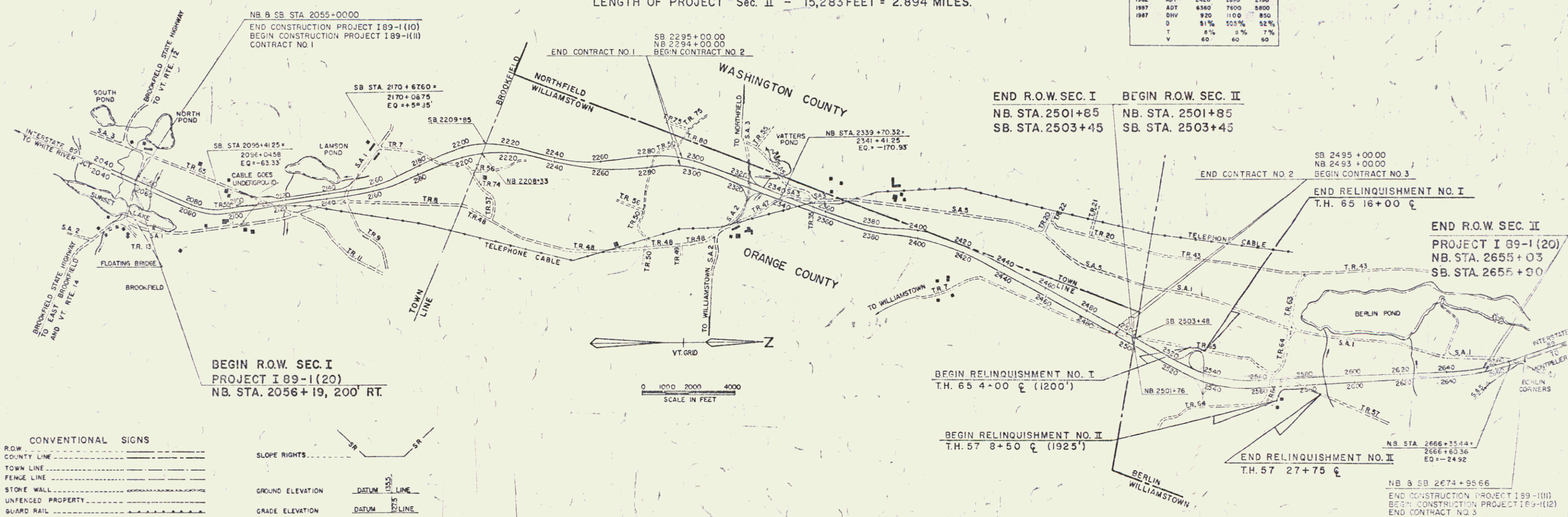
SECTION II R.O.W. PLANS

LENGTH OF PROJECT Sec. II - 15,283 FEET = 2.894 MILES.



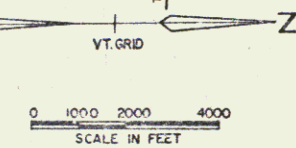
TRAFFIC DATA

YEAR	ADT	1962	1967	1967	1967	1967
1962	2400	2400	2800	2100		
1967	4360	6560	7600	8800		
1967	920	1100	850			
	8%	10.5%	12%			
T	6%	8%	7%			
V	60	60	60			



- CONVENTIONAL SIGNS
- RAILROAD
 - COUNTY LINE
 - TOWN LINE
 - FENCE LINE
 - STONE WALL
 - UNFENCED PROPERTY
 - GUARD RAIL
 - TRAVELED WAY
 - RAILROAD
 - RETAINING WALL
 - CENTER LINE
 - SURVEY LINE
 - CULVERT
 - DRAIN INLET
 - TROLLEY POLE
 - POWER POLE
 - TELEPHONE POLE
 - TREES
 - HEDGE
 - UNTRACED ROADS

- SLOPE RIGHTS
- GROUND ELEVATION DATUM
- GRADE ELEVATION DATUM
- CURVE DATA
- DEFLECTION OF ANGLE
 - DEGREE OF CURVE
 - RADIUS OF CURVE
 - TANGENT DISTANCE
 - LENGTH OF CURVE
 - EXTERNAL DISTANCE
 - POINT OF INTERSECTION
 - POINT OF CURVE
 - POINT OF TANGENT
 - POINT ON TANGENT
 - POINT ON SUB-TANGENT
 - POINT ON CURVE



END R.O.W. SEC. I
NB. STA. 2501+85
SB. STA. 2503+45

BEGIN R.O.W. SEC. II
NB. STA. 2501+85
SB. STA. 2503+45

END RELINQUISHMENT NO. I
T.H. 65 16+00

BEGIN R.O.W. SEC. II
PROJECT I 89-1 (20)
NB. STA. 2655+03
SB. STA. 2655+00

BEGIN RELINQUISHMENT NO. I
T.H. 65 4+00 (1200')

BEGIN RELINQUISHMENT NO. II
T.H. 57 8+50 (1925')

END RELINQUISHMENT NO. II
T.H. 57 27+75

N.B. & S.B. 2674+95.66
END CONSTRUCTION PROJECT I 89-1 (10)
BEGIN CONSTRUCTION PROJECT I 89-1 (12)
END CONTRACT NO. 3

THESE PLANS ARE SUBJECT TO SUCH REVISIONS AS MAY BE REQUIRED BY THE BUREAU OF PUBLIC ROADS OR THE COMMISSIONER OF HIGHWAYS.

CONSTRUCTION IS TO BE CARRIED ON IN ACCORDANCE WITH THESE PLANS AND THE STANDARD SPECIFICATIONS FOR HIGHWAY AND BRIDGE CONSTRUCTION DATED APRIL 1964, AS APPROVED BY THE BUREAU OF PUBLIC ROADS ON OCTOBER 12, 1964, INCLUDING ALL SUCCESSIVE APPROVED REVISIONS AND SUCH REVISED SPECIFICATIONS AND SPECIAL PROVISIONS AS ARE INCORPORATED IN THESE PLANS.

APPROVED DIRECTOR DATE 10/31/67	APPROVED DISTRICT ENGINEER DATE 10/31/67	APPROVED SUPERVISOR ENGINEER DATE 10/31/67	APPROVED PROJECT ENGINEER DATE 10/31/67	APPROVED STRUCTURE ENGINEER DATE 10/31/67	APPROVED TRAFFIC ENGINEER DATE 10/31/67	APPROVED ELECTRICAL ENGINEER DATE 10/31/67	APPROVED CIVIL ENGINEER DATE 10/31/67
---------------------------------------	--	--	---	---	---	--	---

DEPARTMENT OF COMMERCE
BUREAU OF PUBLIC ROADS

PROJECT NO. 89-1 (10)

SHEET NO. 9

Row Plans con Bars
9