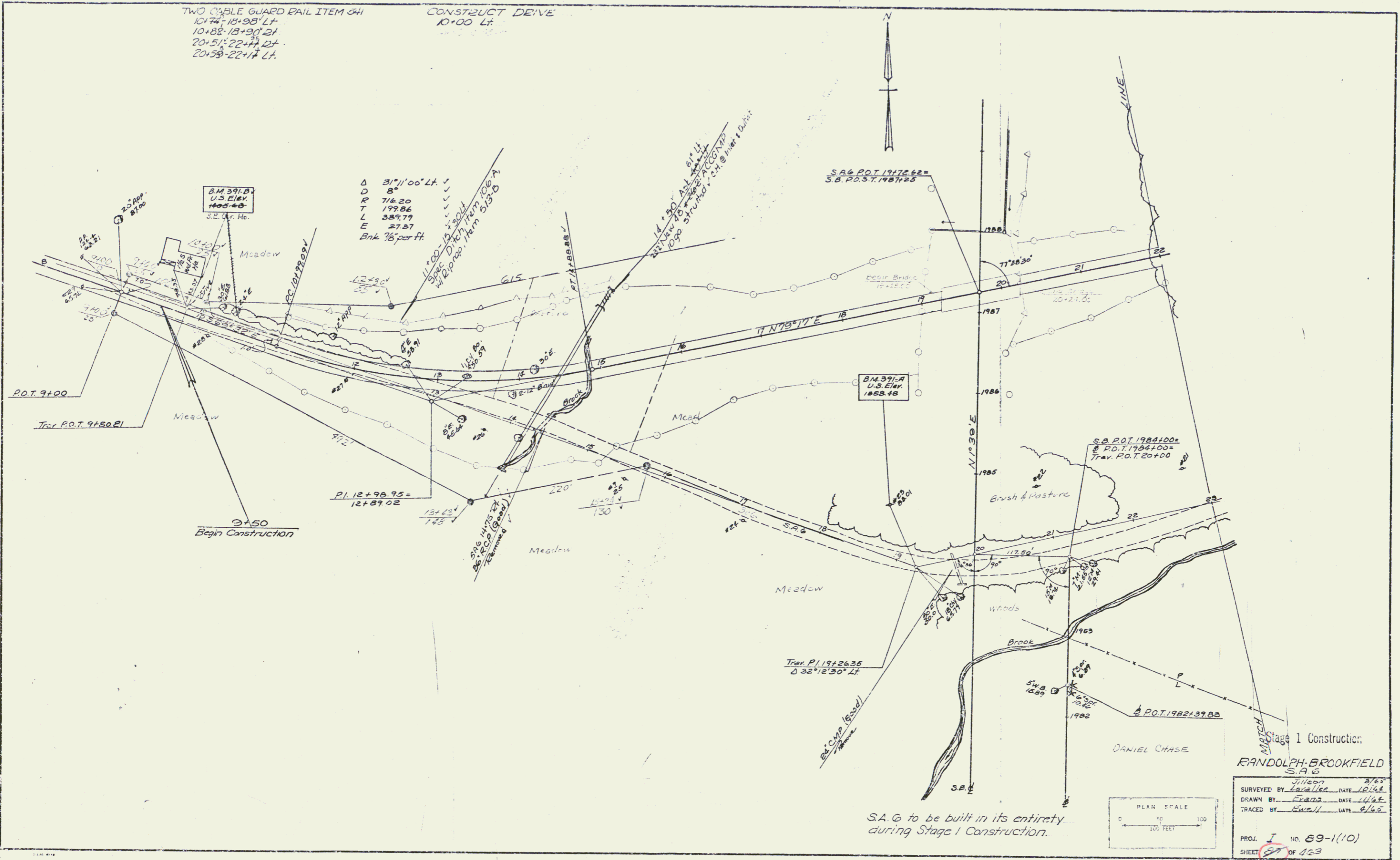


TWO CABLE GUARD RAIL ITEM 34
 10+74.18+98' LT
 10+88.18+90' LT
 20+51.22+11' LT
 20+59.22+11' LT

CONSTRUCT DRIVE
 10+00 LT



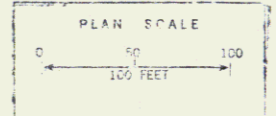
Δ 31°11'00" Lt
 D 8'
 R 716.20
 T 19986
 L 387.79
 E 27.37
 Bnk 7/8 per ft.

S.A.G. P.O.T. 1917.62 =
 S.B. P.O.S.T. 1987.25

B.M. 391-A
 U.S. Elev.
 1889.48

S.A.G. P.O.T. 1984.00 =
 S.P.O.T. 1984.00 =
 Trav. P.O.T. 20+00

Trav. P.I. 19+26.35
 Δ 32°12'30" Lt



Stage 1 Construction
RANDOLPH-BROOKFIELD
 S.A.G.
 SURVEYED BY: *J. Wilson* DATE: *2/63*
 DRAWN BY: *Lavelle* DATE: *10/64*
 TRACED BY: *Quail* DATE: *6/68*
 PROJ. I NO. 69-1(10)
 SHEET *27* OF 423