

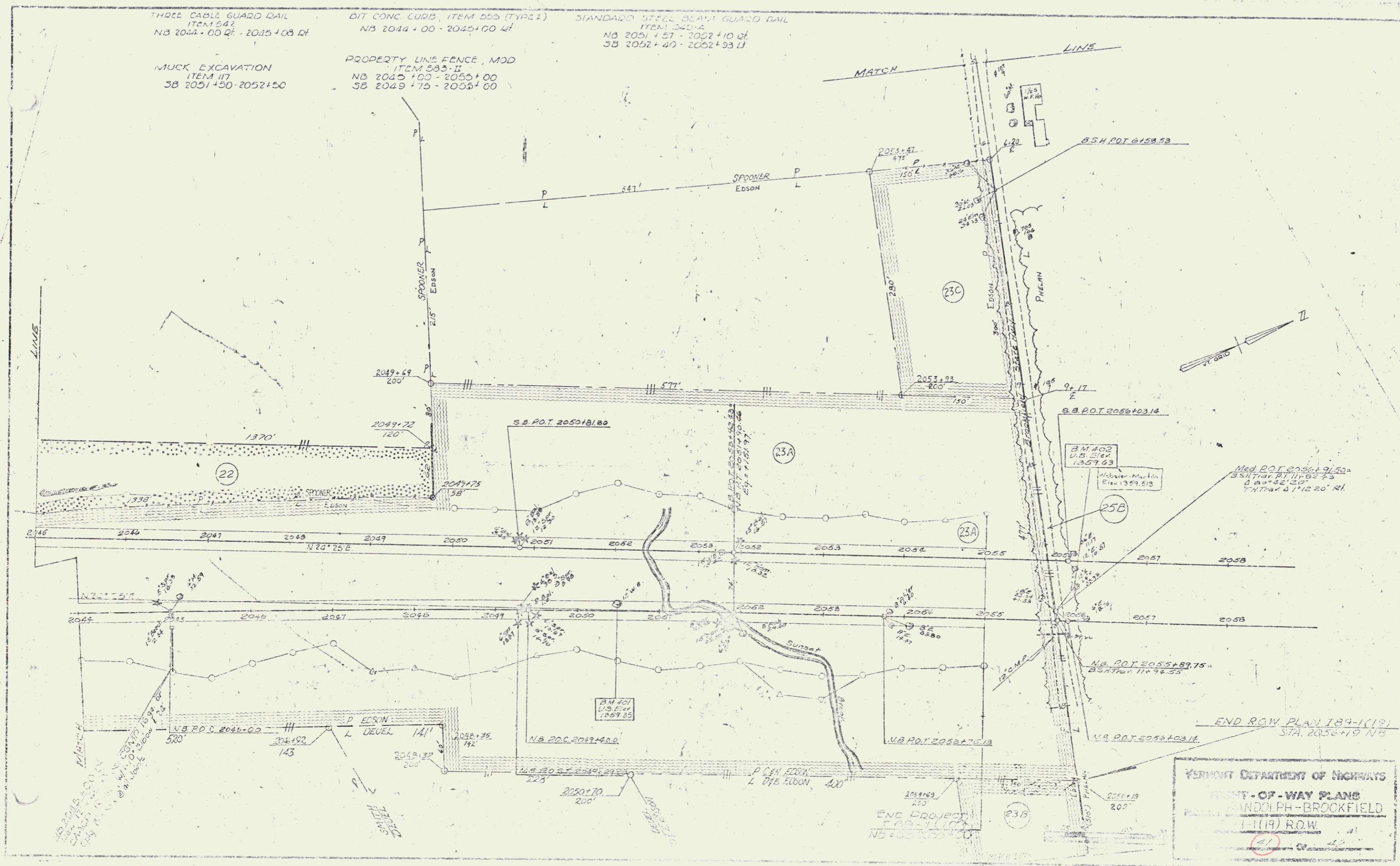
THREE CABLE GUARD RAIL
ITEM 542
NB 2044+00 RL - 2045+00 RL

DIT CONC. CURB, ITEM 555 (TYPE 1)
NB 2044+00 - 2045+00 RL

STANDARD STEEL BEAM GUARD RAIL
ITEM 543
NB 2051+57 - 2052+10 RL
SB 2052+40 - 2052+93 RL

MUCK EXCAVATION
ITEM 117
SB 2051+50 - 2052+50

PROPERTY LINE FENCE, MOD
ITEM 585-II
NB 2045+00 - 2055+00
SB 2049+75 - 2055+00



VERMONT DEPARTMENT OF HIGHWAYS
RIGHT-OF-WAY PLANS
 RANDOLPH-BROCKFIELD
 1-11(19) R.O.W.
 (47)