

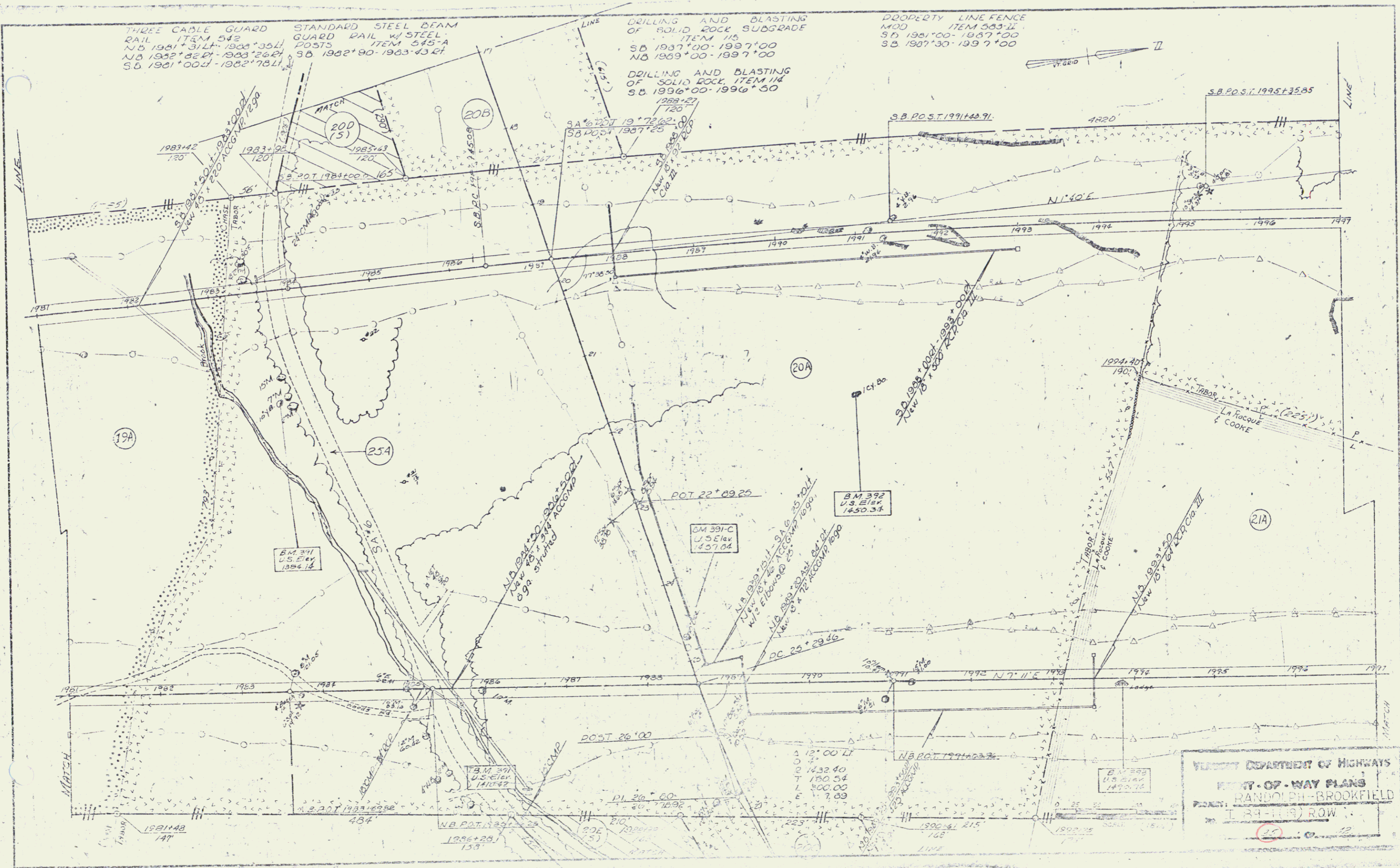
THREE CABLE GUARD RAIL ITEM 542
 NB 1981+31.4 - 1983+35.4
 NB 1982+82.4 - 1983+26.4
 SB 1981+00.4 - 1982+78.1

STANDARD STEEL BEAM GUARD RAIL W/ STEEL POSTS ITEM 545-A
 SB 1982+90 - 1983+40.4

DRILLING AND BLASTING OF SOLID ROCK SUBGRADE ITEM 115
 SB 1987+00 - 1987+00
 NB 1989+00 - 1989+00

DRILLING AND BLASTING OF SOLID ROCK ITEM 114
 SB 1996+00 - 1996+50

PROPERTY LINE FENCE MOD ITEM 563-II
 SB 1981+00 - 1987+00
 SB 1987+30 - 1987+00



VERMONT DEPARTMENT OF HIGHWAYS
 RIGHT-OF-WAY PLANS
 PROJECT: RANDOLPH-BROOKFIELD
 PLAN: I 24-119 ROW
 20 0 22