

THREE CABLE GUARD RAIL
ITEM 542
SB 1715+50 - 1724+50 Lt.

STANDARD STEEL BEAM GUARD RAIL
ITEM 545-A
NB 1716+53 - 1717+10 Rt.

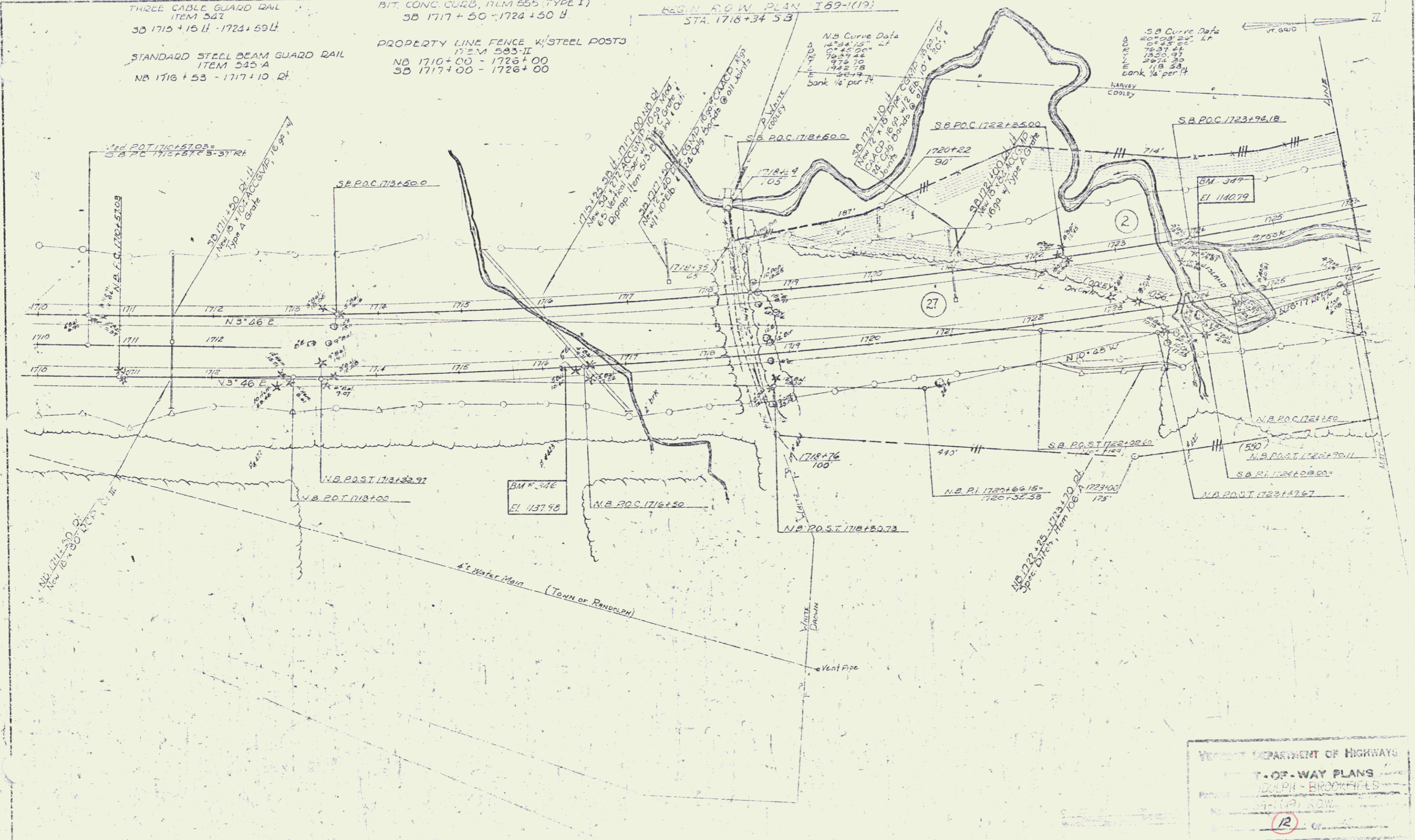
BIT. CONC. CURB, ITEM 555 (TYPE I)
SB 1717+50 - 1724+50 Lt.

PROPERTY LINE FENCE W/ STEEL POSTS
ITEM 583-II
NB 1710+00 - 1726+00
SB 1717+00 - 1726+00

REG. R.O.W. PLAN 169-1(19)
STA. 1718+34 SB

N.B. Curve Data
R=24.15'
L=44.50'
PI=1719.44
PT=1719.78
E=50.19'
bank 1/2 per ft.

S.B. Curve Data
R=23.50'
L=43.50'
PI=1720.37
PT=1720.50
E=50.19'
bank 1/2 per ft.



VERMONT DEPARTMENT OF HIGHWAYS
R.D. OF WAY PLANS
DUNLAP - BROOKFIELD
169-1(19) R.O.W.
12