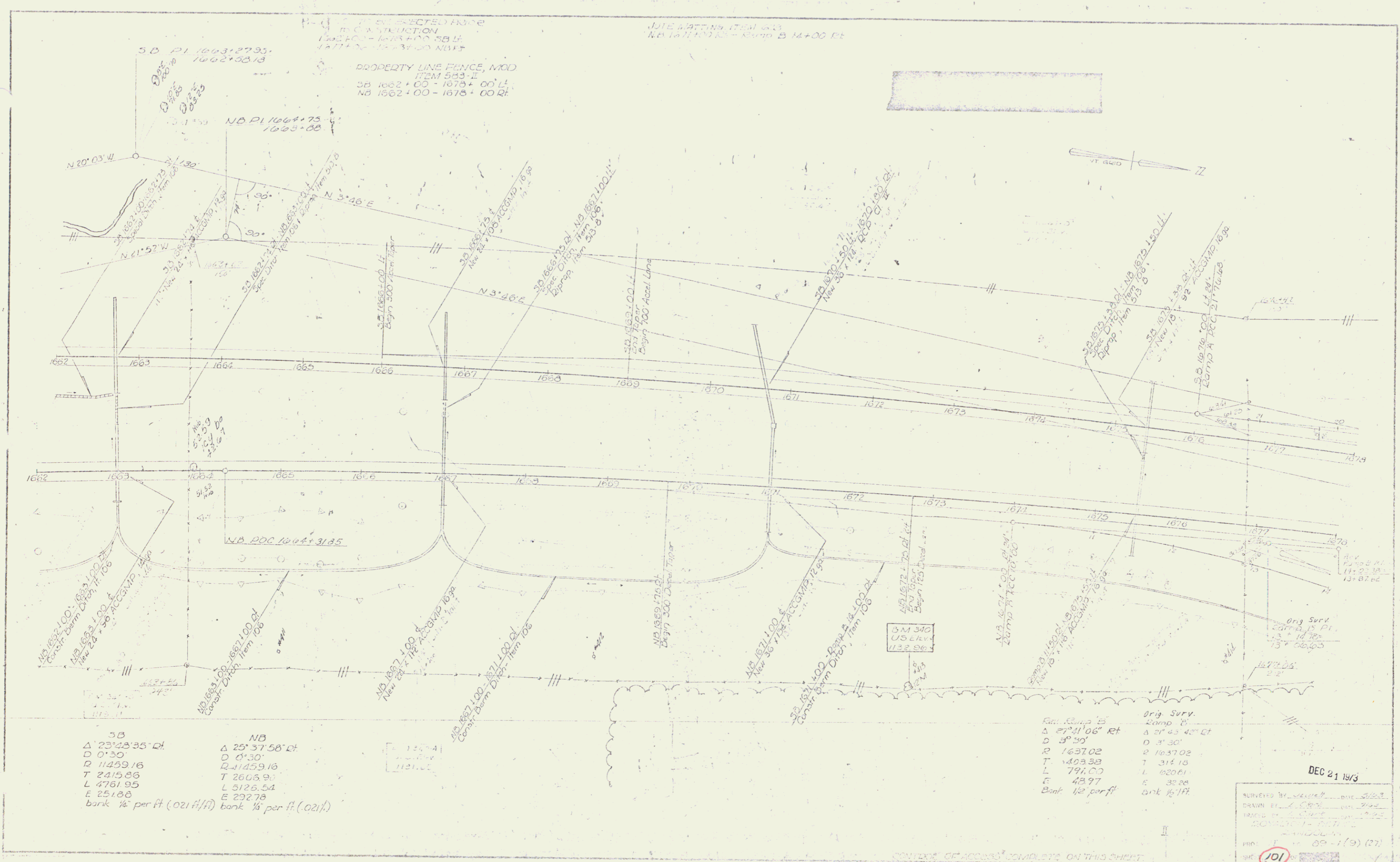


PROPERTY LINE FENCE, MOD  
ITEM 583 II  
SB 1662+00 - 1678+00 Lt.  
NB 1662+00 - 1678+00 Rt.

NOTE: PLATTING FROM 1873  
NB 1671+00 - 1678+00



SB	NB
Δ 23° 33' 35" Rt.	Δ 25° 37' 58" Rt.
D 0' 30"	D 0' 30"
R 11459.16	R 11459.16
T 2415.86	T 2606.90
L 4761.95	L 5126.54
E 251.66	E 292.78
bank 1/4" per ft (.021 ft/ft)	bank 1/4" per ft (.021 ft/ft)

Run Camp 5	Orig Surv. Camp 8
Δ 27° 11' 06" Rt	Δ 27° 43' 42" Rt
D 3' 50"	D 3' 30"
R 1637.02	R 1637.02
T 1403.38	T 314.18
L 791.07	L 1620.61
E 43.97	E 32.28
Bank 1/2" per ft	Bank 1/2" per ft

DEC 21 1973

SURVEYED BY: [Signature]  
DRAWN BY: [Signature]  
TRACED BY: [Signature]  
CORRECTED BY: [Signature]  
FILE NO: 89-19 (27)  
SHEET: 101