

\* Three Cable Guard Rail, Item 538  
 1561+00-1564+00 S.B. RT.  
 1559+00-1563+00 N.B. RT.  
 1560+00-1564+00 N.B. LT.  
 1550+00-1550+00 N.B. RT.  
 PROPERTY LINE FENCE, MOD. ITEM 583-II  
 S.B. 1550+00-1566+00 LT.  
 N.B. 1550+00-1566+00 RT.

Drilling & Blasting of  
 Solid Rock Subgrade, Item 115  
 N.B. 1554+30- N.B. 1555+75  
 S.B. 1551+60- S.B. 1560+00  
 N.B. 1565+85- N.B. 1566+00

MUCK EXCAVATION, Item 117  
 1550+00-1550+25 NB  
 1562+75-1563+25 SB  
 1564+75-1566+00 SB

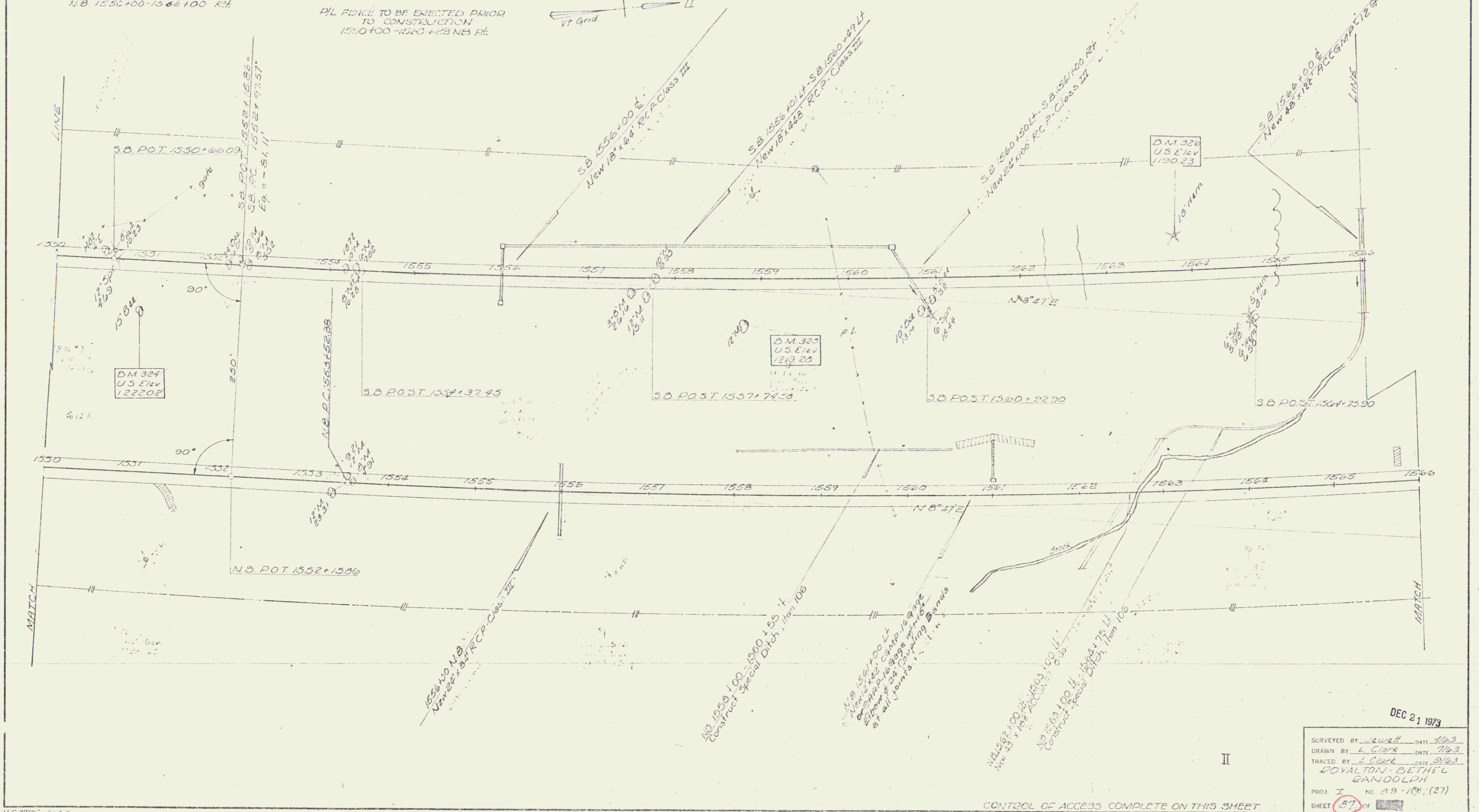
\* Standard Steel Beam Guard Rail  
 Item 545 E  
 S.B. 1565+46 LT- S.B. 1566+00 LT RT

TREATED TIMBER CURB  
 ITEM 538  
 NB 1550+00-1550+15 RT  
 NB 1561+80-1564+50 LT

\* BITUMINOUS GUTTER Using Item 534  
 NB 1565+55-1566+50 LT  
 NB 1561+50 RT  
 NB 1565+75 LT

P/L FENCE TO BE ERECTED PRIOR  
 TO CONSTRUCTION  
 1550+00-1566+00 NB RT.

\* DENOTES STAGE 2 CONSTRUCTION



DEC 21 1973  
 SURVEYED BY Jewett DATE 11/63  
 DRAWN BY L. Clark DATE 11/63  
 TRACED BY L. Clark DATE 3/63  
 ROYALTON-BETHEL  
 RANDOLPH  
 PROJ. NO. 89-109, (27)  
 SHEET 87 OF 102

CONTROL OF ACCESS COMPLETE ON THIS SHEET