

Drilling & Blasting of Solid Rock Subgrade - Item 115

N.B. 1518+40 - N.B. 1521+60  
 N.B. 1524+70 - N.B. 1534+00

S.B. 1517+60 - S.B. 1522+75  
 S.B. 1523+70 - S.B. 1524+10  
 S.B. 1525+70 - S.B. 1534+00

\* Three Cable Guard Rail  
 LIGHT STEEL POSTS, Item 538

1518+00-1519+50 S.B. Rt.  
 1518+00-1520+54 S.B. Lt.

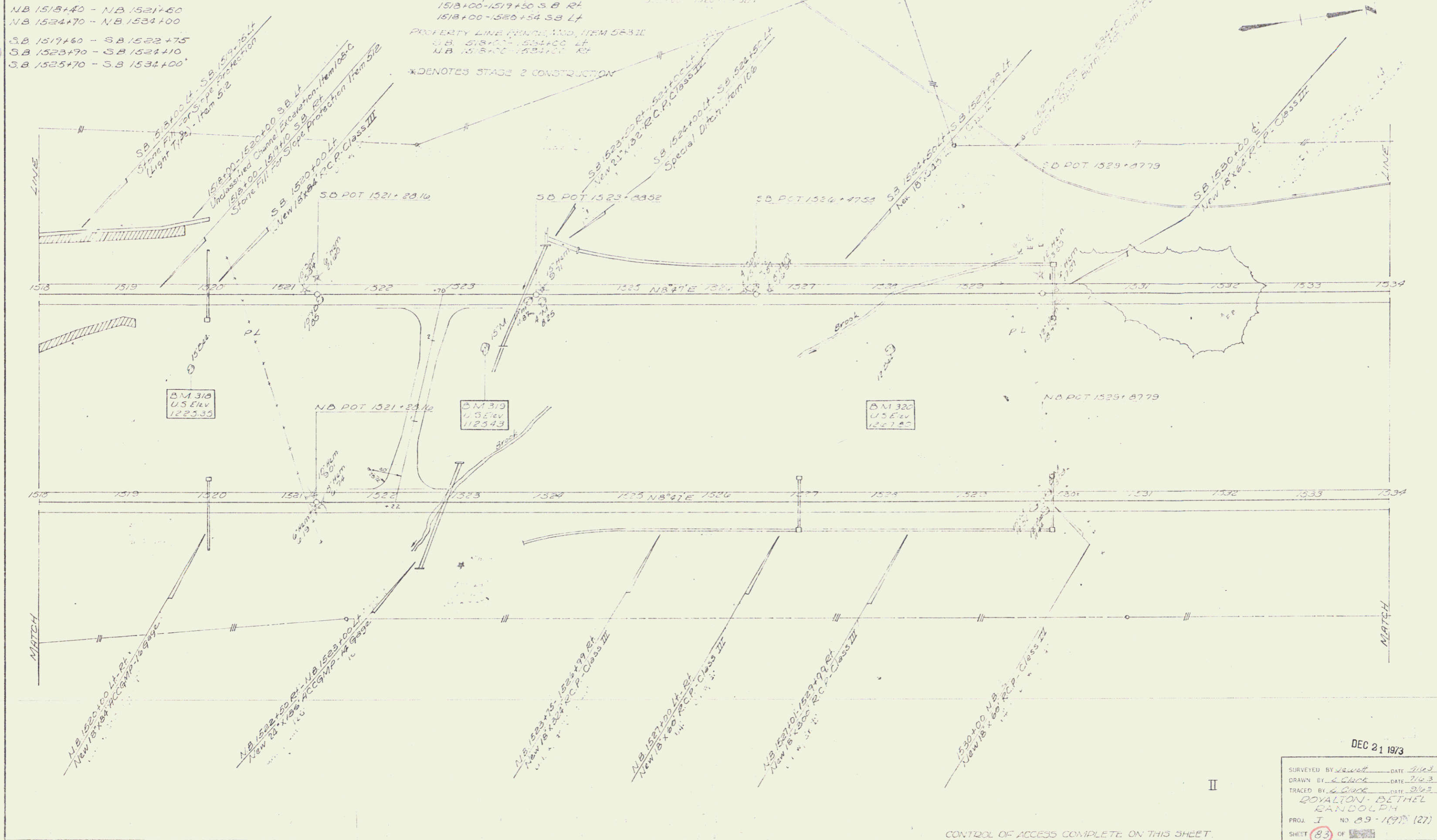
PROPERTY LINE FENCE, WOOD, ITEM 523 II  
 S.B. 1518+00-1524+00 Lt.  
 N.B. 1518+00-1534+00 Rt.

\* DENOTES STAGE 2 CONSTRUCTION

\* INCLINED WOODEN CURB  
 ITEM 520

1518+00-1519+50 S.B. Rt.  
 1518+00-1520+54 S.B. Lt.

CONSTRUCT U-TURN  
 NB 1522+22 - SB 1522+78



LINE

LINE

MATCH

MATCH

DEC 21 1973

SURVEYED BY	DATE
DRAWN BY	DATE
TRACED BY	DATE
ROYALTON - BETHEL DANDOLPH	
PROJ. I NO. 89-1(9) (27)	
SHEET	OF
83	88

CONTROL OF ACCESS COMPLETE, ON THIS SHEET.

79