

PROPERTY LINE FENCE, MOD. ITEM 583-II  
 SB 1359+00 - 1375+00 Lt.  
 NB 1351+00 - 1375+00 Rt.

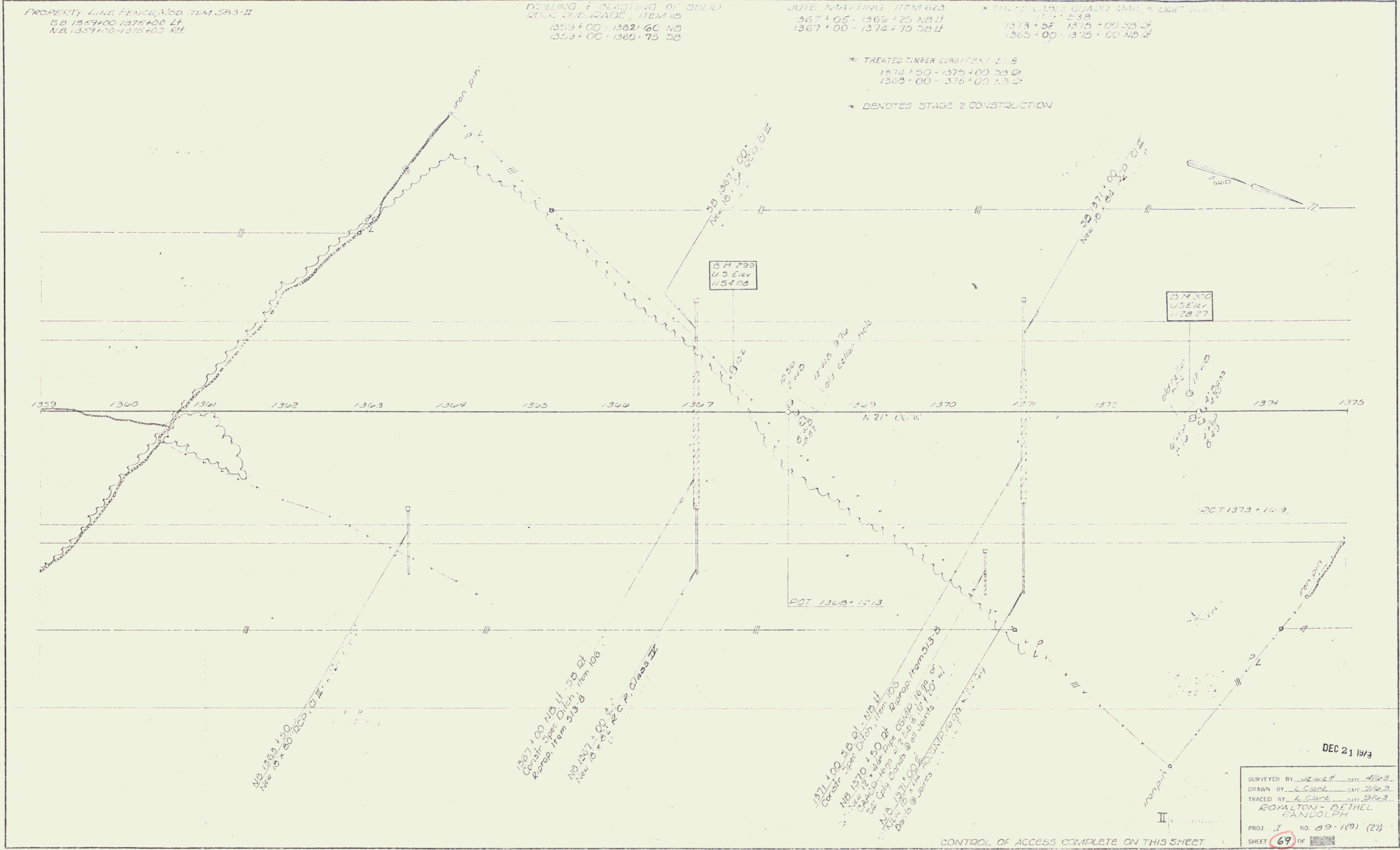
DRILLING & PLASTING OF SOLID  
 POLY. WIRE FENCE, ITEM 115  
 1359+00 - 1362+60 NB  
 1359+00 - 1369+75 SB

JUTE MATTING, ITEM 623  
 1367+05 - 1369+25 NB Lt.  
 1367+00 - 1374+75 SB Lt.

\* THREE CASES GUARD DALL, LIGHT 583-10  
 1375+50  
 1375+00 - 1375+00 SB Lt.  
 1365+00 - 1375+00 NB Lt.

\* TREATED TIMBER CURB ITEM 8  
 1370+50 - 1375+00 SB Lt.  
 1369+00 - 1375+00 NB Lt.

\* DENOTES STAGE 2 CONSTRUCTION



1367+00 NB 115-59 01  
 Const. Stage 2, Item 115  
 2. Prop. from 513-B

1367+00 NB 115-59 01  
 Const. Stage 2, Item 115  
 2. Prop. from 513-B

1367+00 NB 115-59 01  
 Const. Stage 2, Item 115  
 2. Prop. from 513-B

1371+00 SB 115-119 11  
 Const. Stage 2, Item 115  
 2. Prop. from 513-B

1371+00 SB 115-119 11  
 Const. Stage 2, Item 115  
 2. Prop. from 513-B

1371+00 SB 115-119 11  
 Const. Stage 2, Item 115  
 2. Prop. from 513-B

DEC 21 1973

SURVEYED BY *W. G. Galt* DATE *11/23/73*  
 DRAWN BY *A. Galt* DATE *11/23/73*  
 TRACED BY *A. Galt* DATE *11/23/73*  
 ROYALTON - BETHEL  
 RANDOLPH

PROJ. I NO. 89-1(9) (27)  
 SHEET 69 OF 100

CONTROL OF ACCESS COMPLETE ON THIS SHEET