

PROPERTY LINE FENCE, MOD
ITEM 503 II
1279+00-1293+75 SB LT
1294+02-1295+00 SB LT
1279+00-1294+65 NB RT
1294+92-1295+00 NB RT

PIL FENCE TO BE ERRECTED PRIOR
TO CONSTRUCTION
N.B. 1279+00-1295+00 RT
S.B. 1279+00-1295+00 LT

JUTE MATTING, ITEM 623
1279+00-1282+75 SB LT
1283+75-1293+75 NB RT
1279+00-1293+75 NB RT

SUBBASE OF SAND, ITEM 202
SB 1279+00-1281+25

* THREE CABLE GUARD, ITEM 515
1281+50-1289+02 NB RT
1279+00-1283+52.35 RT

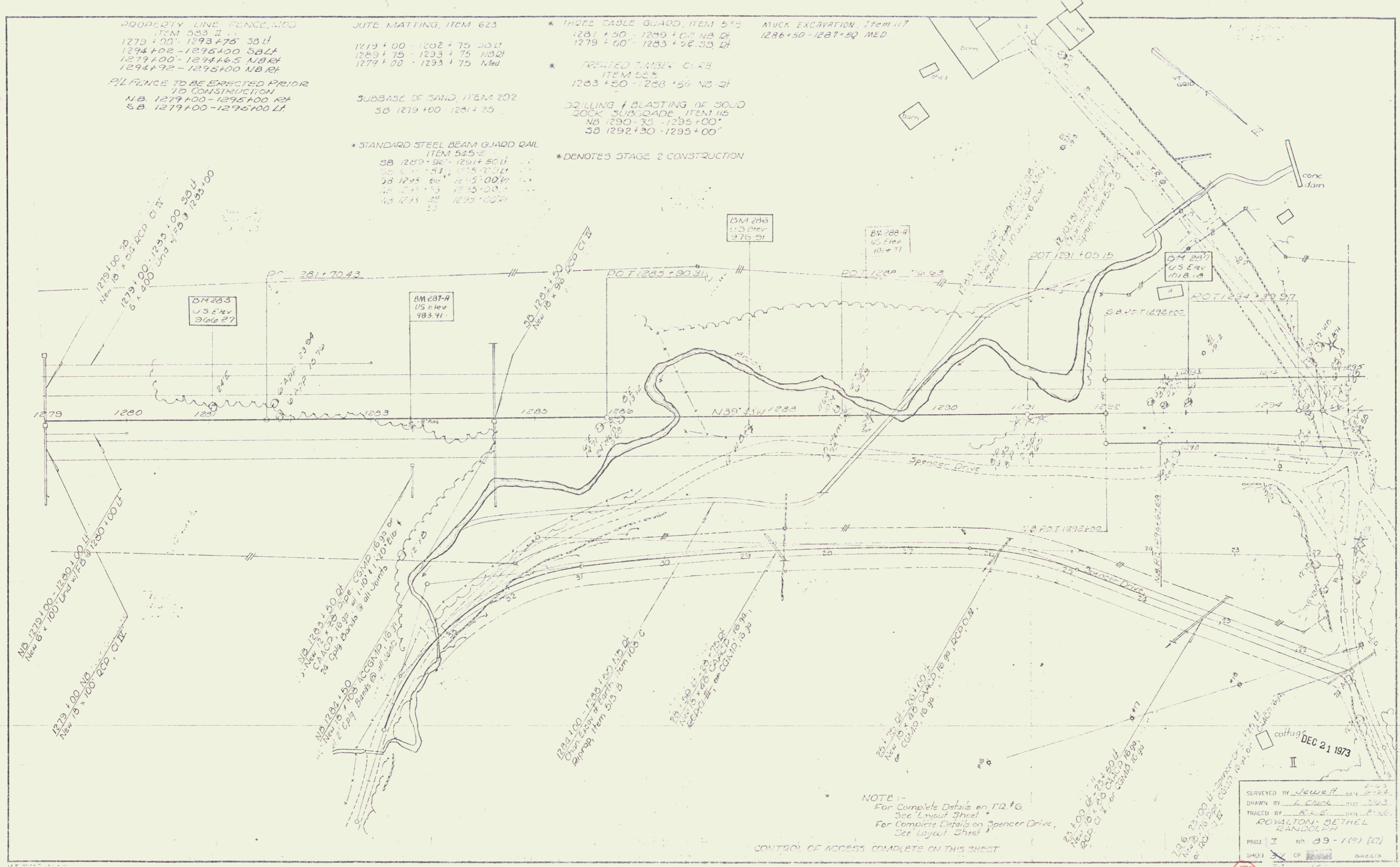
* TREATED TIMBER CURB
ITEM 525
1283+50-1288+50 NB RT

DRILLING & BLASTING OF SOLID
ROCK SUBGRADE, ITEM 115
NB 1290+75-1295+00
SB 1292+30-1295+00

MUCK EXCAVATION, Item 17
1286+50-1287+50 MED

* STANDARD STEEL BEAM GUARD RAIL
ITEM 545-E
SB 1282+92-1291+50 LT
SB 1291+51-1295+00 LT
SB 1295+60-1295+00 LT
SB 1295+75-1295+00 LT
SB 1295+80-1295+00 LT

* DENOTES STAGE 2 CONSTRUCTION



NOTE:-
For Complete Details on RT+G
See Layout Sheet
For Complete Details on Spencer Drive,
See Layout Sheet

CONTROL OF ACCESS COMPLETE ON THIS SHEET

DEC 21 1973

SURVEYED BY Jewett
DRAWN BY L. Clark
TRACED BY R.L.E.
ROYALTON, BETHEL
RANDOLPH

PROJ. I NO. 89-1(9) (27)
SHEET 37 OF 38 SHEETS

65