

THREE CABLE GUARD RAIL
ITEM 542
SB 1715+15.14 - 1722+37.14

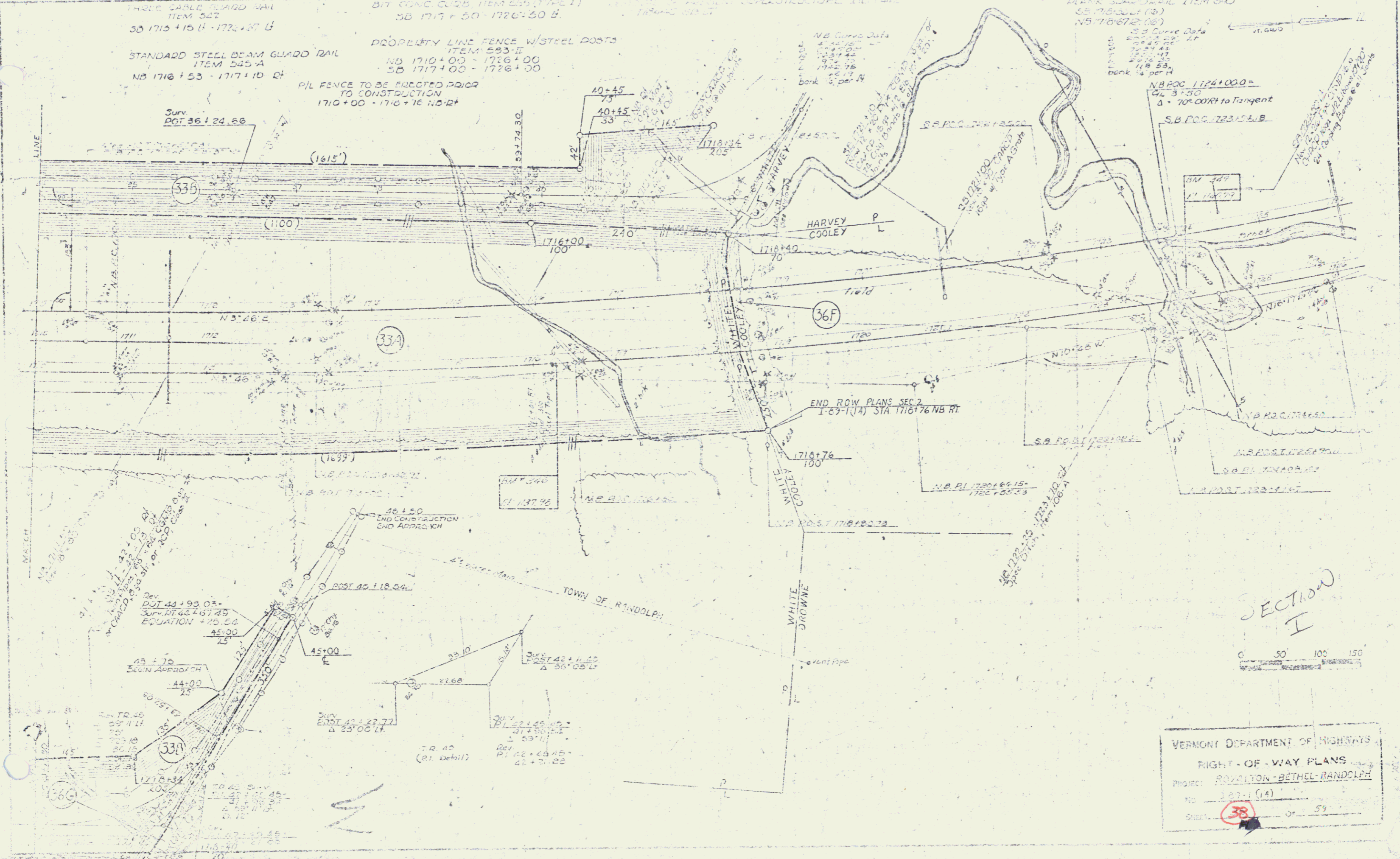
STANDARD STEEL BEAM GUARD RAIL
ITEM 545-A
NB 1716+53 - 1717+10.14

BIT CONC CURB, ITEM 545 (TYPE 1)
SB 1717+50 - 1726+30.14

PROPERTY LINE FENCE W/STEEL POSTS
ITEM 545-B
NB 1710+00 - 1726+00
SB 1717+00 - 1726+00

P/L FENCE TO BE ERECTED PRIOR
TO CONSTRUCTION
1710+00 - 1716+76 NB RT

PLANK GUARD RAIL ITEM 540
SB 1718+30.14 (B)
NB 1716+72.14 (B)



SECTION I



VERMONT DEPARTMENT OF HIGHWAYS
RIGHT-OF-WAY PLANS
PROJECT: RANDOLPH-BETHEL-RANDOLPH
NO. 123-1 (14)
SHEET 38 OF 59