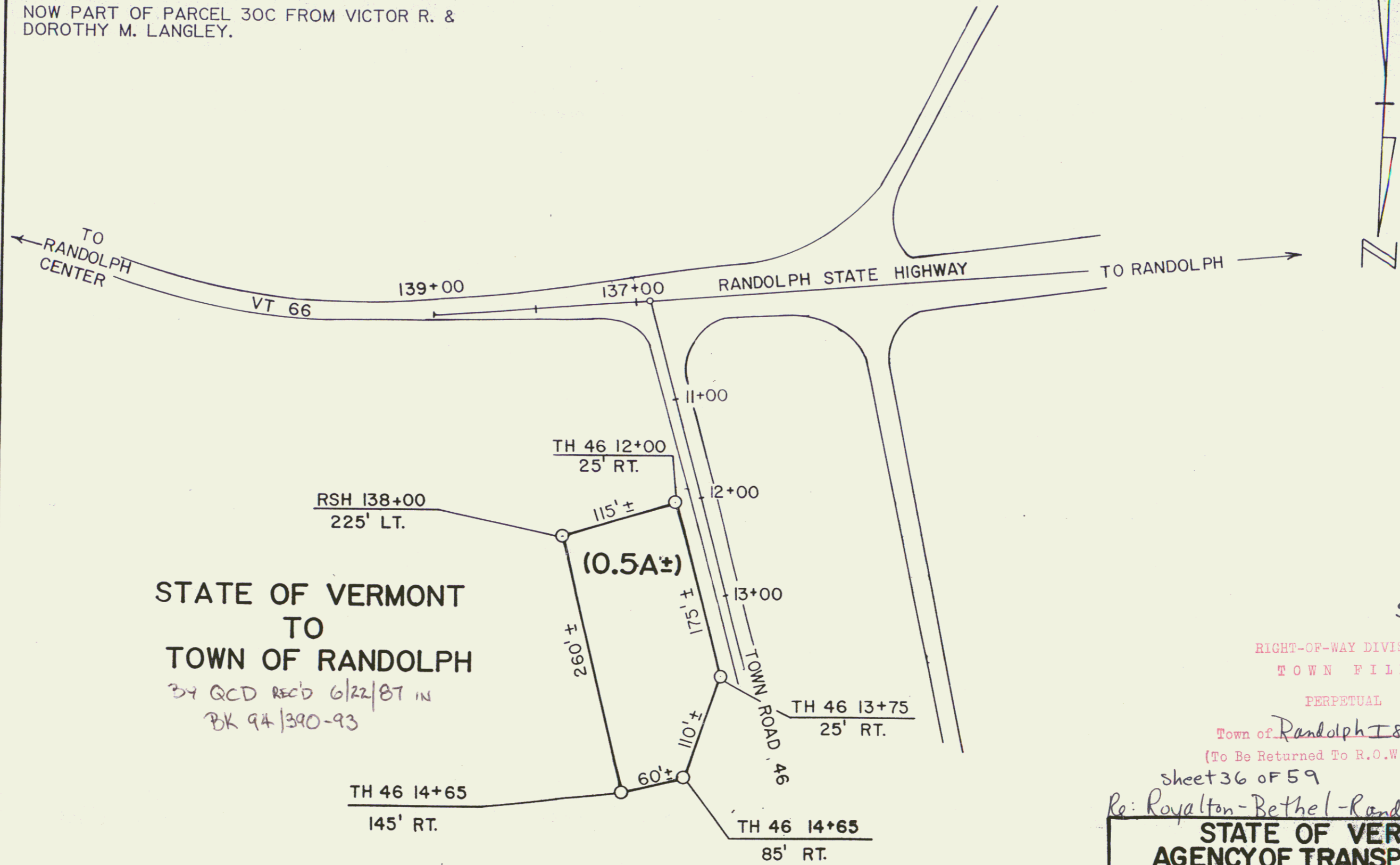


TITLE SOURCE: CONDEMNATION ORDER DATED  
JULY 19, 1966. RE: ROYALTON-BETHEL-RANDOLPH  
189-1(14)

NOW PART OF PARCEL 30C FROM VICTOR R. &  
DOROTHY M. LANGLEY.



STATE OF VERMONT  
TO  
TOWN OF RANDOLPH

BY QCD REC'D 6/22/87 IN  
BK 94/390-93

SECTION I

RIGHT-OF-WAY DIVISION  
TOWN FILE

PERPETUAL

Town of Randolph 189  
(To Be Returned To R.O.W. Division)

sheet 36 of 59

Re: Royalton-Bethel-Randolph 189-1(14)

STATE OF VERMONT  
AGENCY OF TRANSPORTATION

TOWN OF RANDOLPH

36A

42

APPROX SCALE 1"=100' DATE 4-7-87 DRAWN BY MJJ