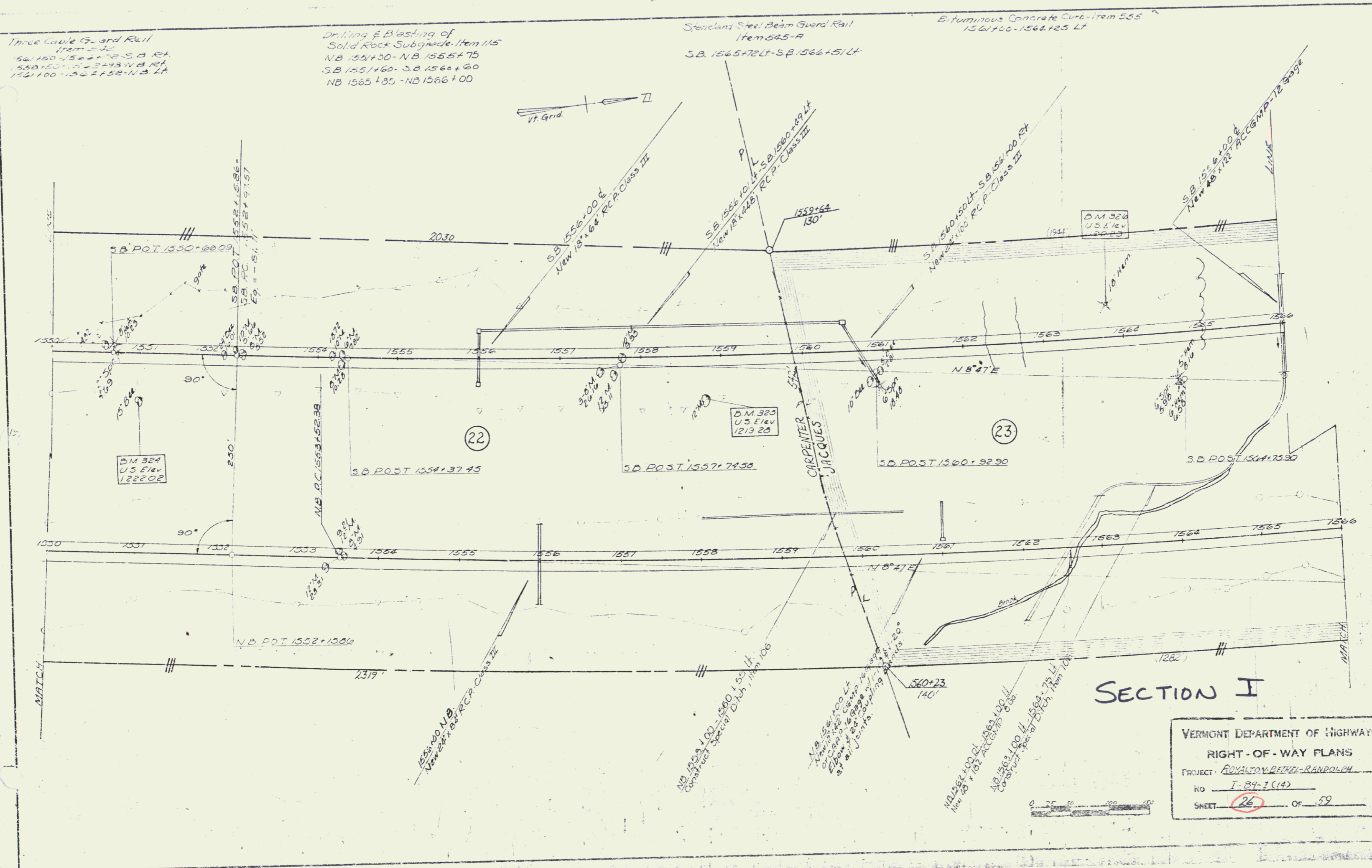


Three Cable Guard Rail
Item 115
1561+00-1562+75 S.B. RT
1562+75-1563+95 N.B. RT
1561+00-1562+75 N.B. LT

Drilling & Blasting of
Solid Rock Subgrade Item 115
N.B. 1551+30 - N.B. 1555+75
S.B. 1551+60 - S.B. 1560+60
N.B. 1565+85 - N.B. 1566+00

Standard Steel Beam Guard Rail
Item 545-A
S.B. 1565+72 Lt - S.B. 1566+51 Lt

Bituminous Concrete Curb - Item 555
1561+00 - 1564+25 Lt



SECTION I

VERMONT DEPARTMENT OF HIGHWAYS	
RIGHT-OF-WAY PLANS	
PROJECT - ROYALTON-BETHEL-RANDOLPH	
RD - I-89-1 (14)	
SHEET	26 OF 52