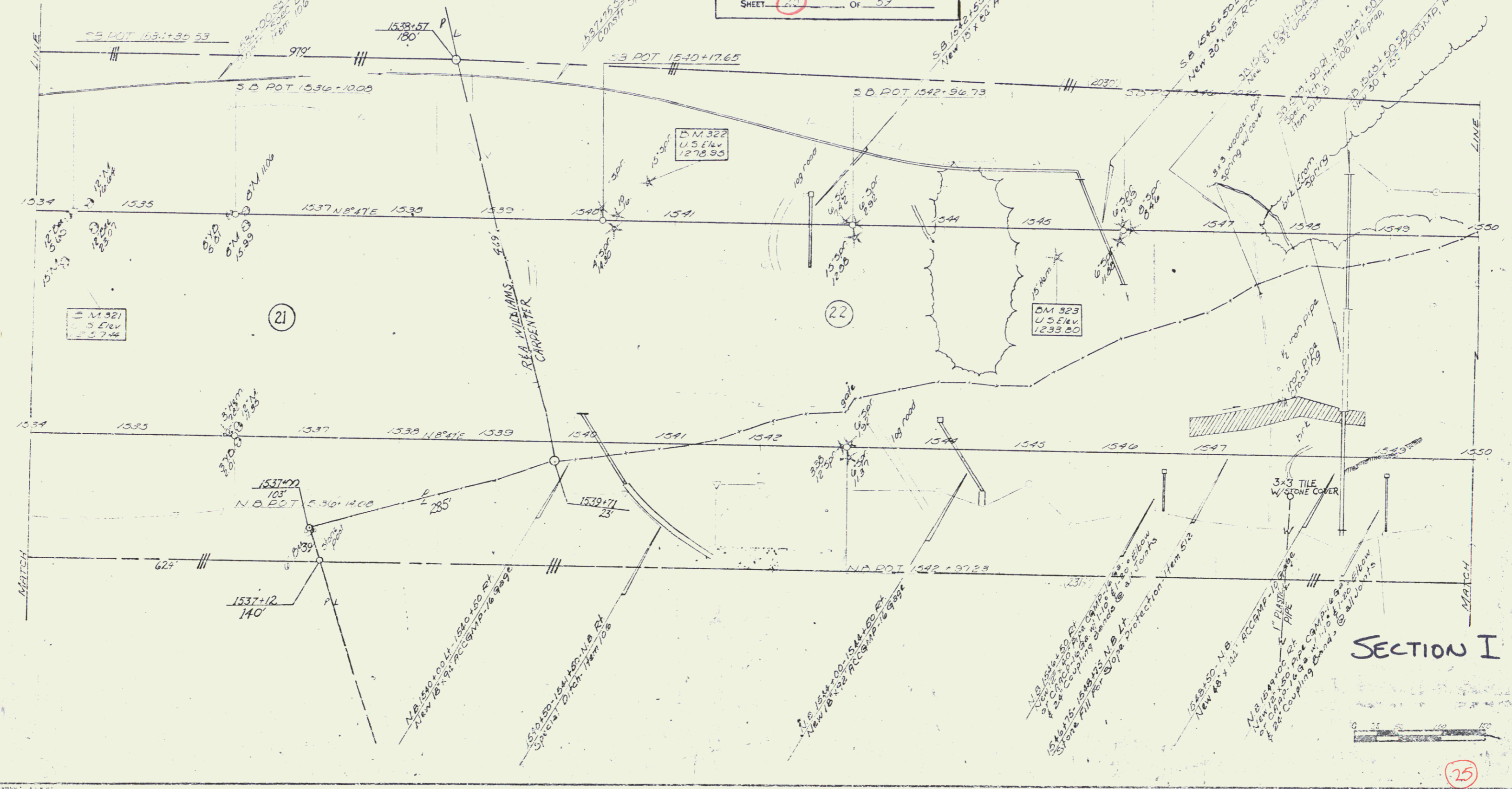


Three Cor & Guard Rail  
Item 542  
1846+00 - 250+00 - N.B. Rt.

Standard Steel Beam Guard Rail  
With Steel Posts - Item 545-A  
N.B. 1548+22 Lt. - N.B. 1548+70 Lt.

Drilling & Blasting of Solid Rock Outgrade - Item 115  
N.B. 1534 - 00 - N.B. 1539+40  
S.B. 1534 - 00 - S.B. 1542+70

VERMONT DEPARTMENT OF HIGHWAYS  
RIGHT-OF-WAY PLANS  
PROJECT: ROYALTON-BETHEL-RANDOLPH  
NO. I-89-1 (14)  
SHEET 25 OF 59



SECTION I