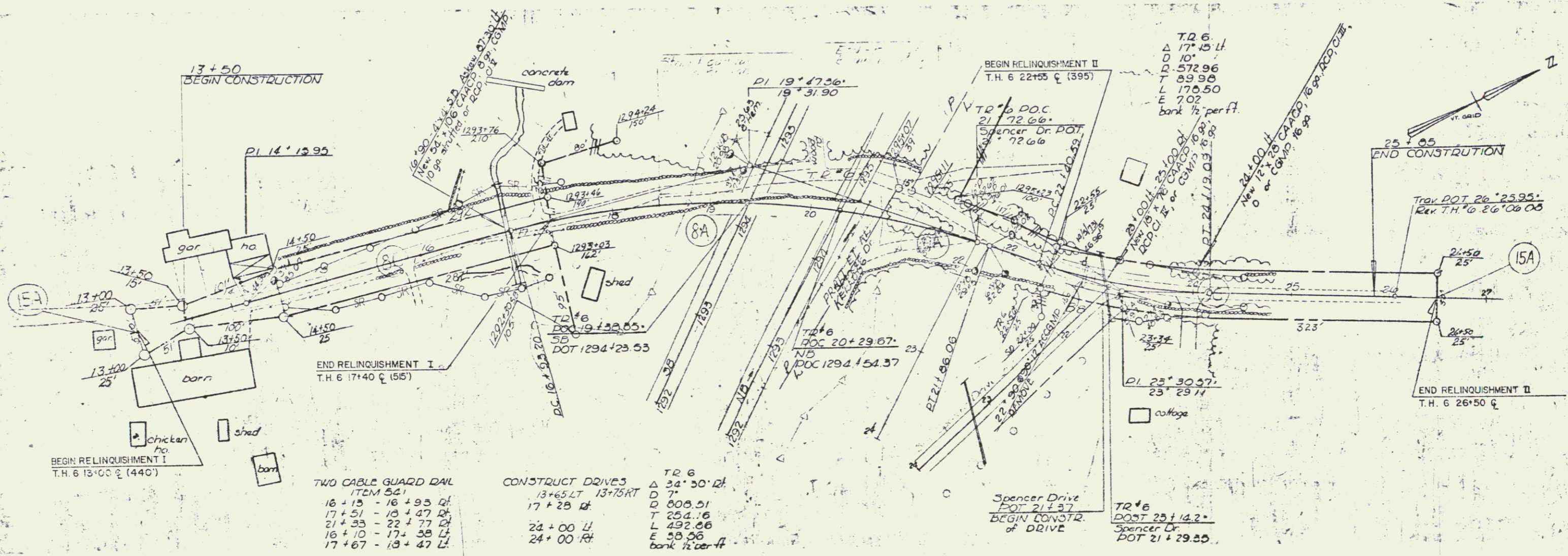


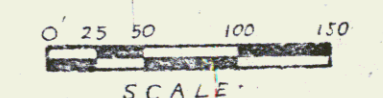
PLAN
 APPROVED
 12/16/06
 100
 L.C.
 12/16/06



TWO CABLE GUARD RAIL
 ITEM 541
 16+15 - 16+93 RT
 17+51 - 18+47 RT
 21+35 - 22+77 RT
 16+10 - 17+38 LT
 17+67 - 18+47 LT

CONSTRUCT DRIVES
 13+65 LT 13+75 RT
 17+28 RT
 24+00 LT
 24+00 RT

TR 6
 Δ 34° 30' 24"
 D 7'
 T 808.51
 L 254.16
 E 292.86
 bank 1/2 per ft



SCALE
 TOWN ROAD #6
 VERMONT DEPARTMENT OF HIGHWAYS
 RIGHT-OF-WAY PLANS
 PROJECT: ROYALTON-BETHEL RANDOLPH
 NO: 189-1(14)
 SHEET: No. 22 of 44

SECTION II