

PROPERTY LINE FENCE w/
STEEL POSTS, ITEM 583-II
SB 1087+00 - 1103+00 Lt
NB 1087+00 - 1103+00 Rt

* BITUMINOUS CONCRETE PAVED GUTTER
ITEM 554
NB 1088+00 - Rt
NB 1095+20 - Rt

JUTE MATTING, ITEM 623
SB 1090+00 - 1093+50 Lt
NB 1094+20 - 1095+50 Rt

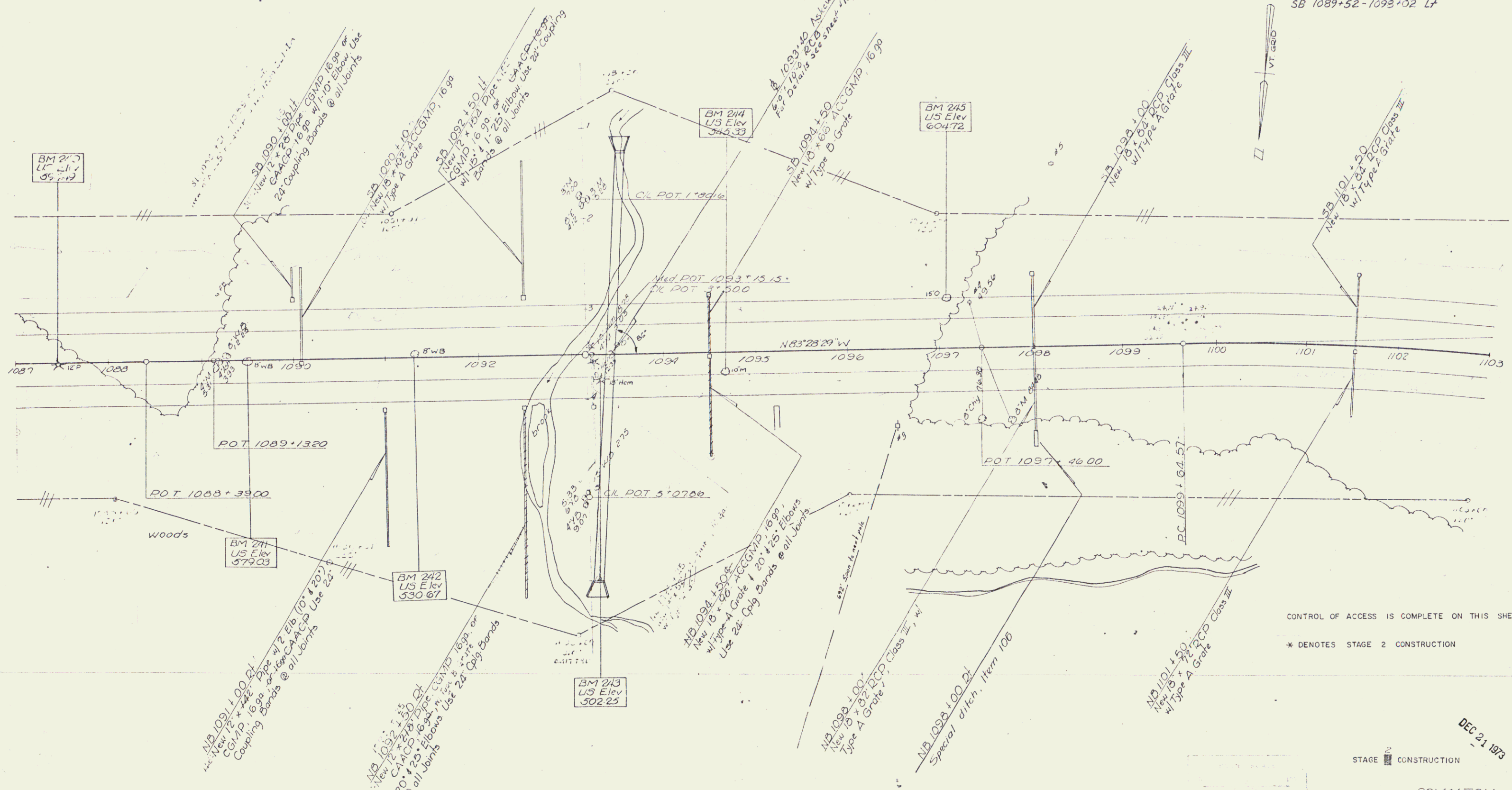
* TREATED TIMBER CURB
ITEM 503
NB 1091+00 - 1095+50 Rt
SB 1090+00 - 1097+10 Lt

* THREE CABLE GUARD RAIL w/
STEEL POSTS, ITEM 538
NB 1099+30 - 1102+50 Lt

* STANDARD STEEL BEAM GUARD RAIL
w/STEEL POSTS ITEM 545-A (6'3" SPACING)
NB 1088+00 - 1095+50 Rt
SB 1089+52 - 1093+02 Lt

Topsoil Stockpile
1100+00 - 1104+50 Lt
1887 CY

PLAN	DATE	BY
REVISED		
NO. 1	12/21/93	W. J. [unclear]
NO. 2		
NO. 3		
NO. 4		
NO. 5		
NO. 6		
NO. 7		
NO. 8		
NO. 9		
NO. 10		



STAGE 2 CONSTRUCTION
DEC 21 1993
ROYALTON
189-1
Sheet 30 of 33

Sheet: 98