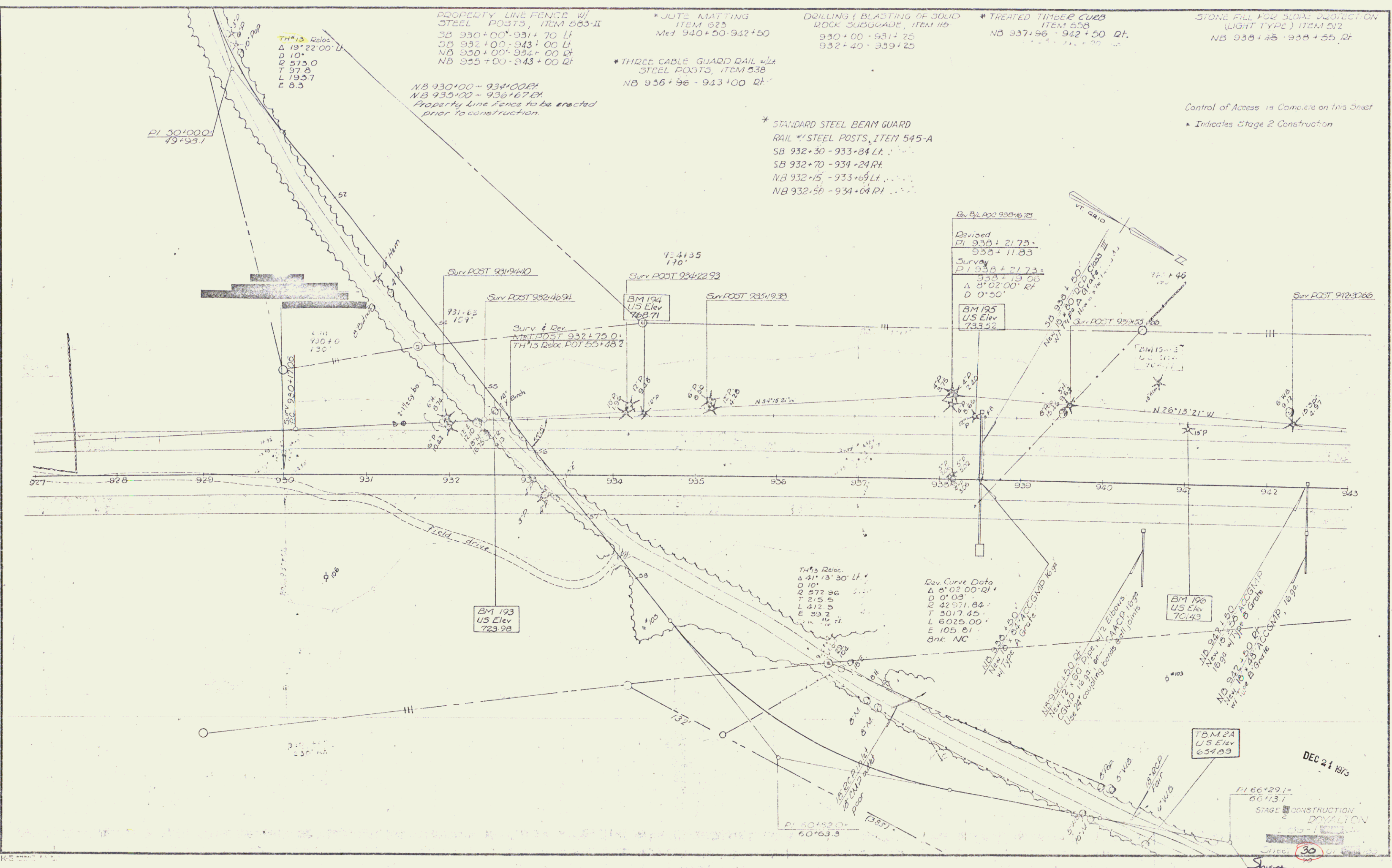


PLAN SHEET  
 WORK SHEET  
 NO. 100  
 DATE 1/10/10  
 BY [Signature]



PROPERTY LINE FENCE w/  
 STEEL POSTS, ITEM 583-II  
 SB 930+00-931+70 LF  
 SB 932+00-943+00 LF  
 NB 930+00-934+00 RT  
 NB 935+00-943+00 RT

\* JUTE MATTING  
 ITEM 625  
 Mat 940+50-942+50

DRILLING (BLASTING OF SOLID  
 ROCK SUBGRADE, ITEM 119  
 930+00-931+25  
 932+40-939+25

\* TREATED TIMBER CURB  
 ITEM 558  
 NB 937+96-942+50 RT

STONE FILL FOR SLOPE PROTECTION  
 (LIGHT TYPE) ITEM 612  
 NB 938+45-938+55 RT

\* THREE CABLE GUARD RAIL w/  
 STEEL POSTS, ITEM 538  
 NB 936+96-943+00 RT

\* STANDARD STEEL BEAM GUARD  
 RAIL w/ STEEL POSTS, ITEM 545-A  
 SB 932+30-933+84 LF  
 SB 932+70-934+24 RT  
 NB 932+15-933+05 LF  
 NB 932+50-934+04 RT

Control of Access is Complete on this Street  
 \* Indicates Stage 2 Construction

NB 930+00-934+00 RT  
 NB 935+00-936+67 RT  
 Property Line Fence to be erected  
 prior to construction.

Revised  
 PI 938+21.73  
 938+11.83  
 Survey  
 PI 938+21.73  
 938+13.00  
 $\Delta$  0°02'00" RT  
 D 0°50'

Rev Curve Data  
 $\Delta$  0°02'00" RT  
 D 0°05'  
 R 42571.84  
 T 215.5  
 L 212.9  
 E 33.2  
 Bnk NC

TH#13 Reloc  
 $\Delta$  41°13'30" LT  
 D 100'  
 R 572.96  
 T 215.5  
 L 212.9  
 E 33.2

DEC 21 1913

TH 66+39.1  
 66+43.7  
 STAGE 2 CONSTRUCTION  
 DONALTON

Sheet