

* THREE CABLE GUARD RAIL W/
LIGHT STEEL POSTS ITEM 535
NB 797+48 - 799+00 E/L

PROPERTY LINE FENCE W/STEEL POSTS
ITEM 533-II
SB 783+00 - 789+00 E/L
NB 783+80 - 789+00 E/L

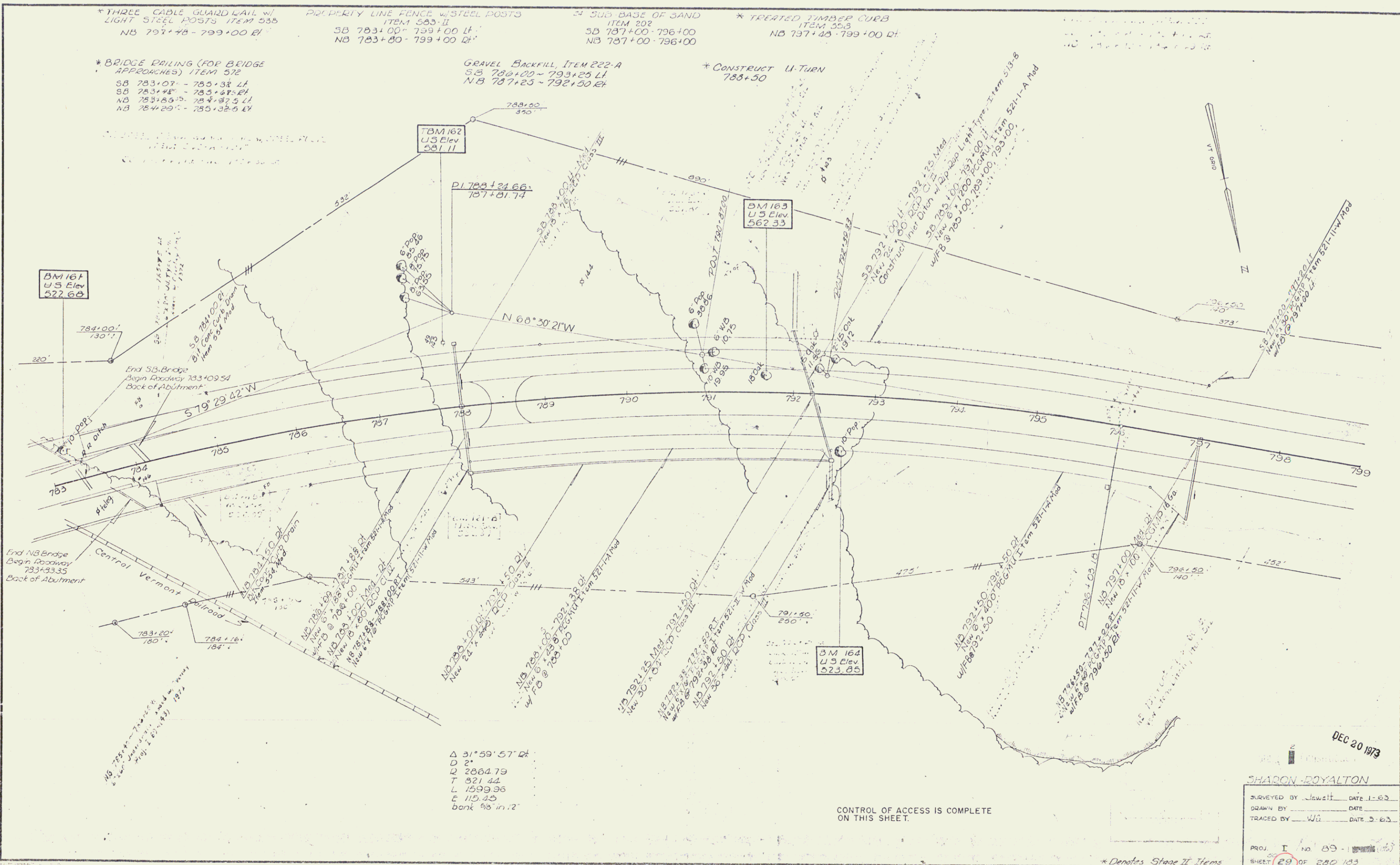
* SUB-BASE OF SAND
ITEM 202
SB 787+00 - 796+00
NB 787+00 - 796+00

* TREATED TIMBER CURB
ITEM 553
NB 787+48 - 799+00 E/L

* BRIDGE RAILING (FOR BRIDGE
APPROACHES) ITEM 512
SB 783+07 - 785+38 E/L
SB 783+48 - 785+48 E/L
NB 783+85 - 784+82.5 E/L
NB 784+29 - 785+32.6 E/L

GRAVEL BACKFILL ITEM 222-A
SB 786+20 - 793+25 E/L
NB 787+25 - 792+50 E/L

* CONSTRUCT U-TURN
785+50



End NB Bridge
Begin Roadway
783+33.35
Back of Abutment

Central Vermont
Railroad

783+20' 100'
784+16' 184'

NB 783+48 - 785+48 E/L
New 24' x 24' Class III
w/ 20 @ 783+00

NB 784+29 - 785+32.6 E/L
New 24' x 24' Class III
w/ 20 @ 783+00

NB 785+32.6 - 785+32.6 E/L
New 24' x 24' Class III
w/ 20 @ 783+00

NB 786+20 - 793+25 E/L
New 24' x 24' Class III
w/ 20 @ 783+00

NB 787+25 - 792+50 E/L
New 24' x 24' Class III
w/ 20 @ 783+00

NB 788+20 - 793+25 E/L
New 24' x 24' Class III
w/ 20 @ 783+00

NB 789+00 - 796+00 E/L
New 24' x 24' Class III
w/ 20 @ 783+00

Δ 31° 59' 57" E/L
D 2'
T 2864.79
L 821.44
E 1599.36
bank 90' in 12'

CONTROL OF ACCESS IS COMPLETE
ON THIS SHEET.

DEC 30 1973

SHARON ROYALTON

SURVEYED BY Jewett DATE 1-63
DRAWN BY _____ DATE _____
TRACED BY WJ DATE 3-63

PROJ. I No. 89-1 (1973)
SHEET 29 OF 280 (83)

* Denotes Stage II Items