

PROPERTY LINE FENCE w/
STEEL POSTS, ITEM 503-II
Ramp A 12'00" - 10'42.7" Lt
Ramp B 4'31.5" - 7'50" Lt
Ramp C 9'00" - 12'7.3" Lt
Ramp D 5'00" - 0'00" Lt
S.B. 1163'00" - 1183'50" Lt
S.B. 1191'05" - 1193'00" Lt
N.B. 1189'26" - 1193'00" Lt

Dev. M.L.
Δ 15' 29" 26" Lt
D 11' 06" 00"
E 5208.71
T 705.44
L 1400.23
E 4796
Bnk. 1/4" 1ft.

GRANITE SLOPE EDGING
ITEM 550-A
N.B. 1183'00" - 1183'37" Lt
S.B. 1183'05" - 1190'20" Lt
Ramp C 9'00" - 12'7.3" Lt
Ramp B 4'31.5" - 7'50" Lt
Ramp D 1'53" - 1'31" Lt

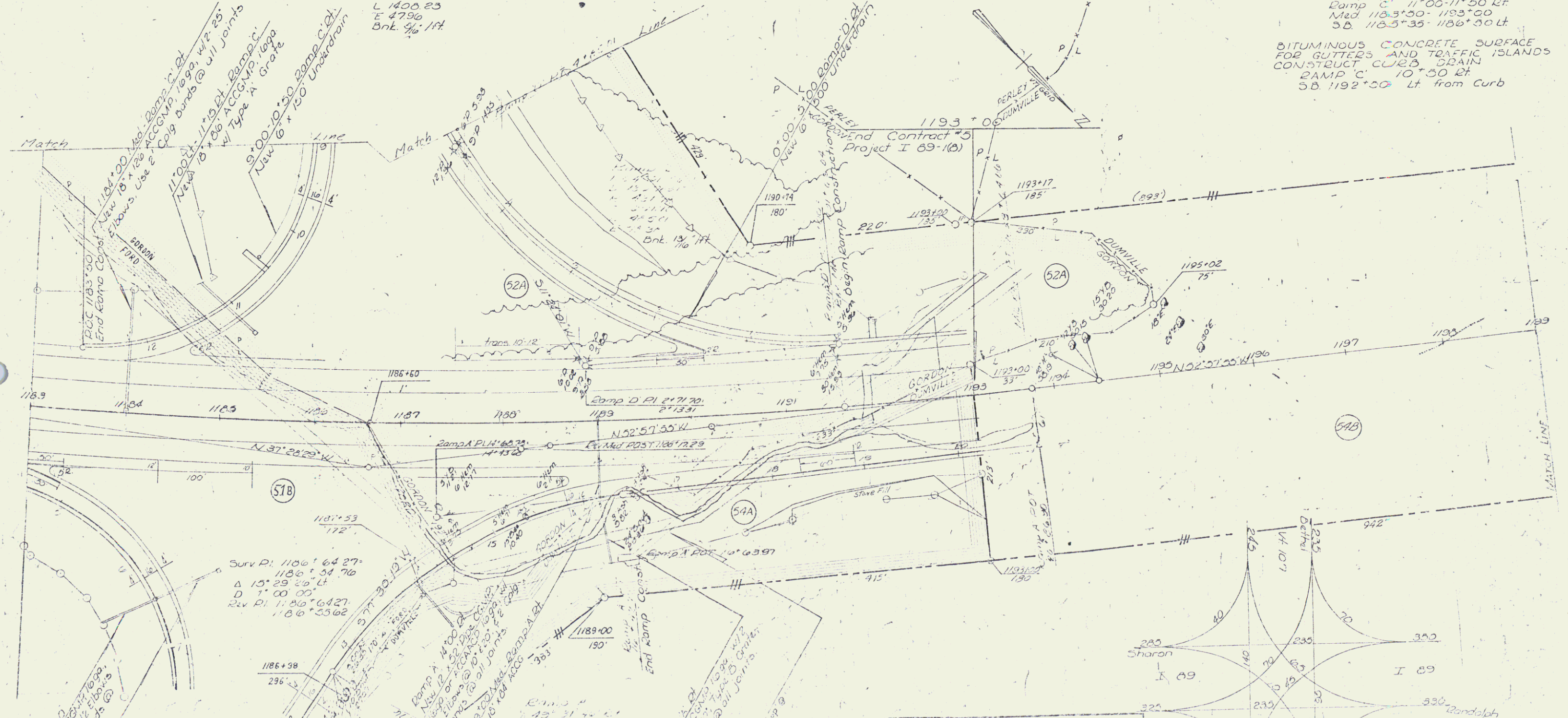
THREE CABLE GUARD RAIL
w/ STEEL POSTS, ITEM 542
Ramp C 11'35" - 12'7.3" Lt
Ramp B 5'50" - 7'48" Lt
Ramp A 0'00" - 7'50" Lt
Ramp D 12'00" - 13'90" Lt
Ramp A 12'00" - 13'90" Lt
S.B. 1183'00" - 1183'50" Lt (Connect to ramp C)
S.B. 1192'00" - 1193'00" Lt

BITUMINOUS CONCRETE
CURB, ITEM 533
Ramp A 12'00" - 10'42.7" Lt
N.B. 1189'26" - 1192'00" Lt
S.B. 1182'00" - 1183'50" Lt
S.B. 1183'00" - 1183'50" Lt Connect to Ramp C

STONE FILL FOR SLOPE
PROTECTION, ITEM 522
N.B. 1191'00" - 1193'00" Lt

JUTE MATTING
ITEM 523
Ramp A 12'00" - 12'50" Lt
Ramp A 13'50" - 15'00" Lt
Ramp B 5'00" - 6'50" Lt
Ramp D 3'00" - 4'00" Lt
Ramp C 11'00" - 11'50" Lt
Med 1183'50" - 1183'50"
S.B. 1183'35" - 1186'30" Lt

BITUMINOUS CONCRETE SURFACE
FOR GUTTERS AND TRAFFIC ISLANDS
CONSTRUCT CURB DRAIN
RAMP C 10'50" Lt
S.B. 1192'50" Lt from Curb

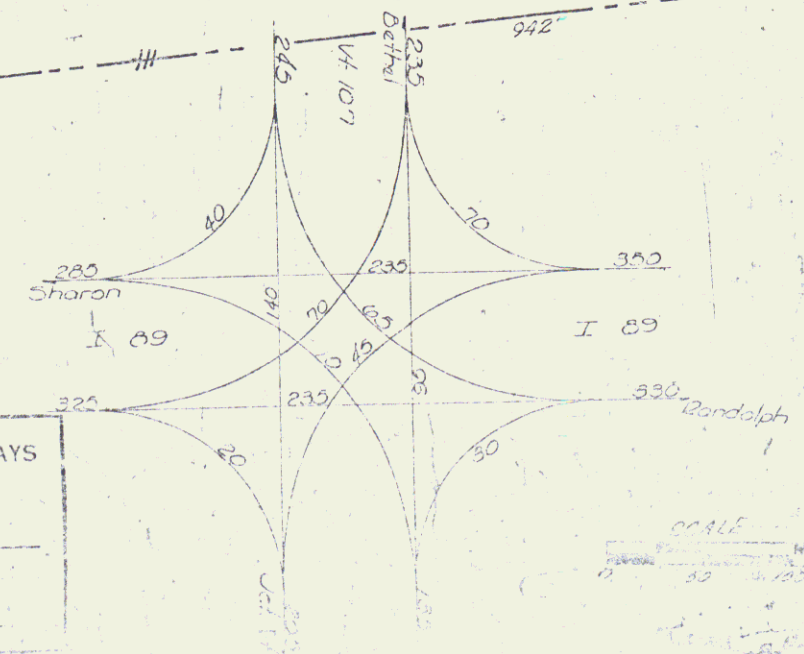


Surv. Pt. 1186' 64.27"
Δ 15' 29" 26" Lt
D 1' 00" 00"
Dev. Pt. 1186' 64.27"
1186' 53.62

Surv. Pt. 1186' 64.27"
Δ 15' 29" 26" Lt
D 1' 00" 00"
Dev. Pt. 1186' 64.27"
1186' 53.62

Surv. Pt. 1186' 64.27"
Δ 15' 29" 26" Lt
D 1' 00" 00"
Dev. Pt. 1186' 64.27"
1186' 53.62

VERMONT DEPARTMENT OF HIGHWAYS
RIGHT-OF-WAY PLANS
PROJECT: SHARON-ROYALTON
No. 289-1-2
SHEET: 44



Sheet
Row-con 59