

* THREE CABLE GUARD RAIL,
LIGHT STEEL POSTS, ITEM 535
SB 623+00-639+00 Lt.

DRILLING & BLASTING OF SOLID
ROCK SUBGRADE, ITEM 115
NB 623+00-624+25.00
NB 631+60-633+75
NB 634+40-635+42

* BITUMINOUS CONCRETE CURB
ITEM 555
SB 623+00-639+00 Lt.

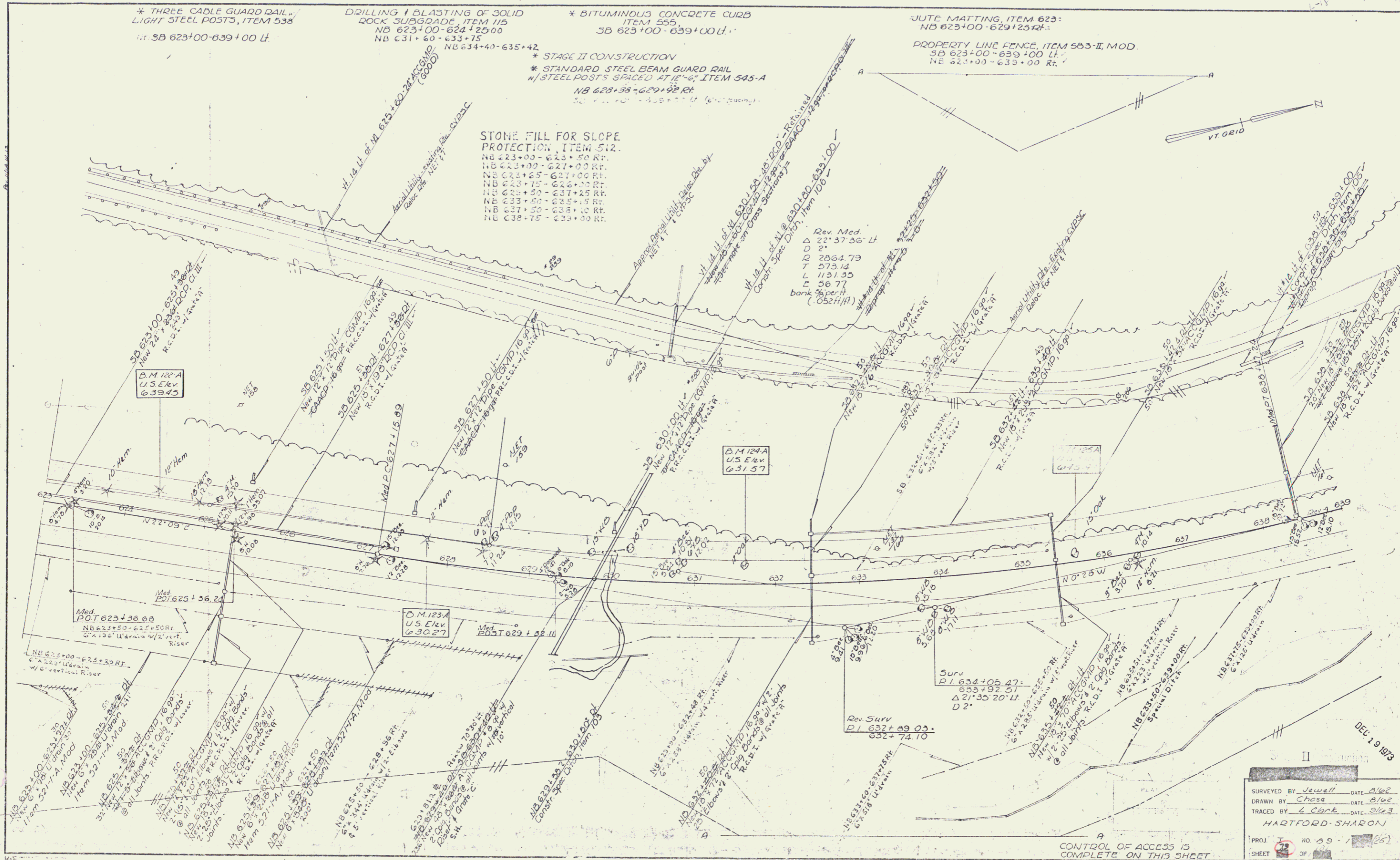
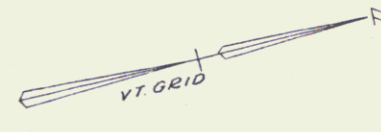
JUTE MATTING, ITEM 623:
NB 623+00-629+25.00

PROPERTY LINE FENCE, ITEM 563-II, MOD.
SB 623+00-639+00 Lt.
NE 623+00-633+00 Rt.

* STAGE II CONSTRUCTION
* STANDARD STEEL BEAM GUARD RAIL
w/ STEEL POSTS SPACED AT 12'-6" ITEM 545-A
NB 623+38-629+92 Rt.

STONE FILL FOR SLOPE
PROTECTION, ITEM 512.
NB 623+00-623+50 Rt.
NB 623+00-627+00 Rt.
NB 623+65-627+00 Rt.
NB 623+15-623+15 Rt.
NB 623+50-627+25 Rt.
NB 623+50-625+15 Rt.
NB 627+50-628+10 Rt.
NB 638+75-623+00 Rt.

Rev. Mod.
Δ 22° 37' 36" Lt.
D 2'
L 2864.79
T 573.14
L 1151.35
L 56.77
bank 56 per ft
(.052111)



DEL 19 1973

SURVEYED BY	Jewett	DATE	8/62
DRAWN BY	Chase	DATE	8/62
TRACED BY	L. Clark	DATE	8/63
HARTFORD-SHARON			
PROJ.	NO. 59	DATE	8/62
SHEET	72	OF	82

CONTROL OF ACCESS IS COMPLETE ON THIS SHEET