

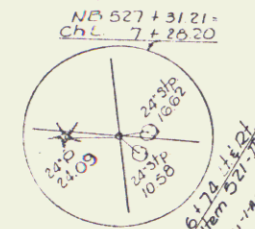
* THREE CABLE GUARD RAIL w/ LIGHT STEEL POSTS, ITEM 538
 NB 527+00 LT - 543+00 LT
 SB 526+00 LT - 524+00 LT
 NB 527+00 LT - 528+56.01

* BITUMINOUS CONCRETE CURB ITEM 500, TYPE II
 NB 531+00 - 543+00 LT
 * DENOTES STAGE 2 ITEMS

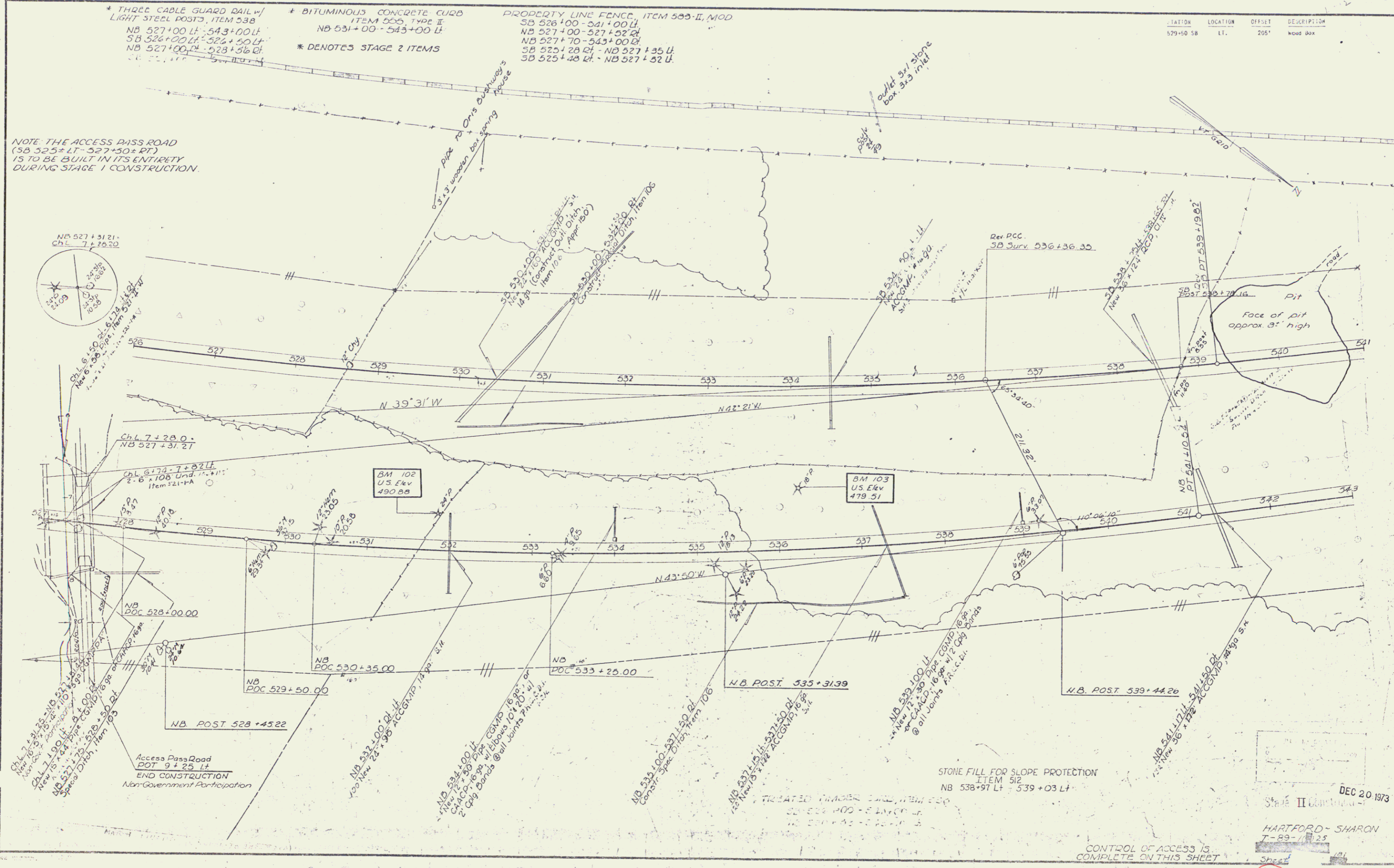
PROPERTY LINE FENCE, ITEM 505-II, MOD
 SB 526+00 - 541+00 LT
 NB 527+00 - 527+52.24
 NB 527+70 - 543+00 LT
 SB 525+28.01 - NB 527+35 LT
 SB 525+48 LT - NB 527+52 LT

STATION	LOCATION	OFF-SET	DESCRIPTION
529+50 SB	LT.	205'	Wood Box

NOTE: THE ACCESS PASS ROAD (SB 525± LT - 527+50± RT) IS TO BE BUILT IN ITS ENTIRETY DURING STAGE 1 CONSTRUCTION



PLAN
 SHEET NO. 58
 PROJECT NO. T-89-125
 DATE: 12/20/73
 DRAWN BY: [Name]
 CHECKED BY: [Name]



DEC 20 1973
 STATE II
 HARTFORD - SHARON
 T-89-125
 Sheet 58

CONTROL OF ACCESS IS COMPLETE ON THIS SHEET