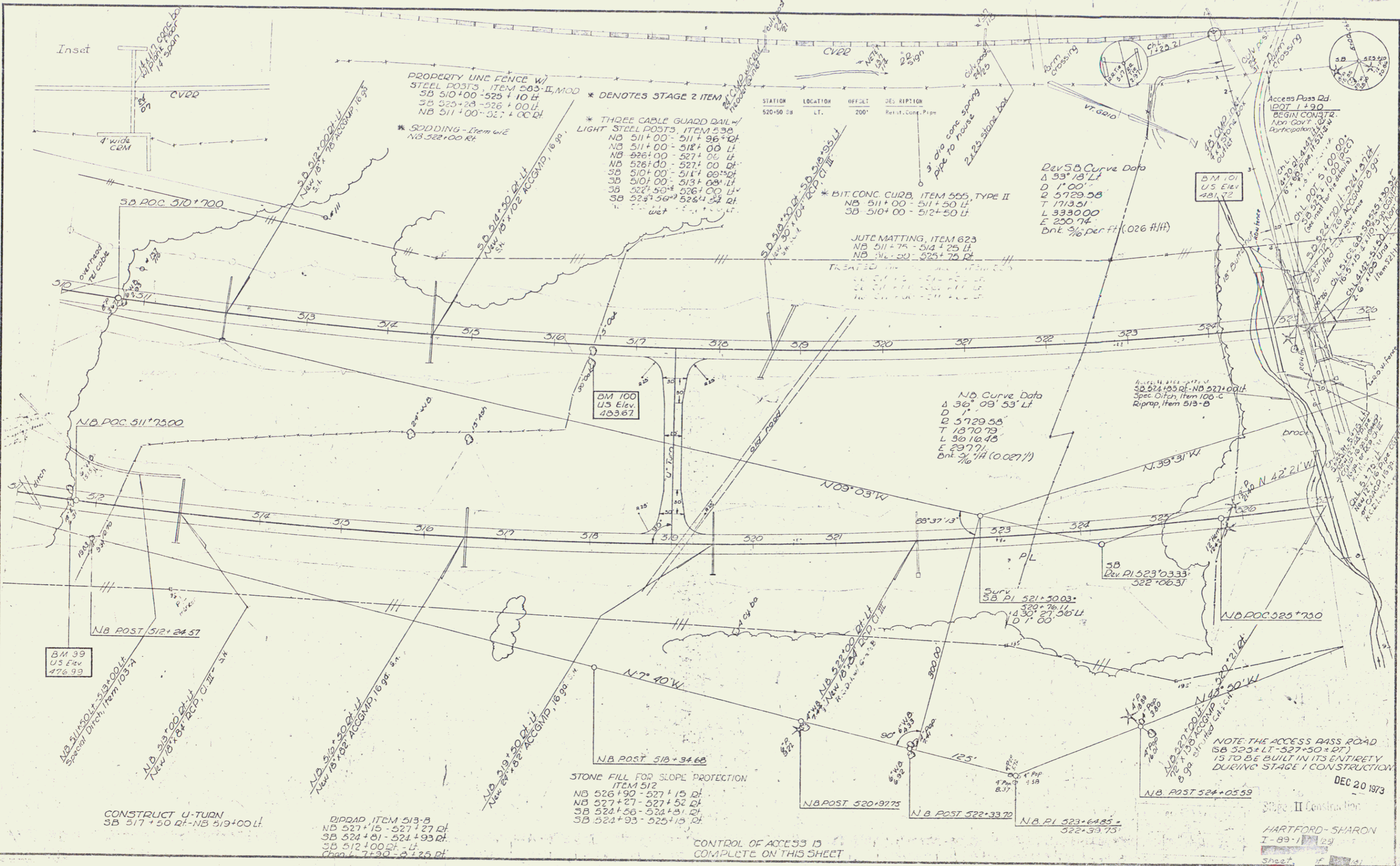


PLAN  
 DATE  
 DRAWN BY  
 CHECKED BY  
 SCALE  
 SHEET NO.



STATION	LOCATION	OFFSET	DESCRIPTION
520+50 SB	LT.	700'	Retit. Cont. Pipe

PROPERTY LINE FENCE W/  
 STEEL POSTS, ITEM 503-II, MOD  
 SB 510+00 - 525+10 LT  
 SB 525+28 - 526+00 LT  
 NB 511+00 - 527+00 RT

\* DENOTES STAGE 2 ITEM  
 \* THREE CABLE GUARD RAIL  
 LIGHT STEEL POSTS, ITEM 538  
 NB 511+00 - 511+36+00 LT  
 NB 511+00 - 518+00 LT  
 NB 526+00 - 527+00 LT  
 NB 528+00 - 527+00 LT  
 SB 510+00 - 517+00 RT  
 SB 510+00 - 513+08+00 LT  
 SB 527+50 - 526+00 LT  
 SB 528+56 - 526+00 RT

REV SB Curve Data  
 Δ 33° 18' LT  
 D 1' 00"  
 T 5729.58  
 L 3330.00  
 E 230.74  
 bnt 9/16 per ft (0.26 ft/ft)

\* BIT CONC. CURB, ITEM 555, TYPE II  
 NB 511+00 - 511+50 LT  
 SB 510+00 - 512+50 LT

JUTE MATTING, ITEM 623  
 NB 511+75 - 514+25 LT  
 NB 516+50 - 525+75 RT

NB Curve Data  
 Δ 36° 09' 53" LT  
 D 1' 00"  
 T 5729.58  
 L 3330.00  
 E 230.74  
 bnt 9/16 (0.26 ft/ft)

SB 514+95 RT - NB 527+00 LT  
 Spec. Diff. Item 103-C  
 Riprap, Item 513-B

SB  
 Rev PI 523+0333  
 522+0637

BM 39  
 US Elev  
 476.99

STONE FILL FOR SLOPE PROTECTION  
 ITEM 512  
 NB 526+90 - 527+15 RT  
 NB 527+27 - 527+52 RT  
 SB 524+56 - 524+51 RT  
 SB 522+93 - 525+15 RT

CONSTRUCT U-TURN  
 SB 517+50 RT - NB 519+00 LT

RIPPAP ITEM 513-B  
 NB 527+15 - 527+27 RT  
 NB 524+81 - 524+93 RT  
 SB 512+00 RT - LT  
 Chgo. L 7+90 - Δ 1.25 RT

CONTROL OF ACCESS IS  
 COMPLETE ON THIS SHEET

NOTE: THE ACCESS PASS ROAD  
 (SB 525+00 LT - 527+50+00 RT)  
 IS TO BE BUILT IN ITS ENTIRETY  
 DURING STAGE I CONSTRUCTION

DEC 20 1973  
 Stage II Construction  
 HARTFORD - SHARON  
 I-89-11123  
 Sheet 1 of 141

56

59