

PLAN
 DATE
 NO. 1077
 COUNTY ENGINEER
 STATE ENGINEER
 DISTRICT ENGINEER
 LOCAL ENGINEER

* THREE CABLE GUARD RAIL w/
 LIGHT STEEL POSTS, ITEM 538
 NB
 500+00 LF-511+00 LF
 507+00 LF-511+00 LF
 SB 494+00 LF-502+00 LF
 507+00 LF-510+00 LF
 507+00 LF-510+00 LF

* BITUMINOUS CONCRETE CURB
 ITEM 553, TYPE II
 NB 503+25-511+00 LF
 SB 507+50-510+00 LF

* DENOTES STAGE 2 ITEMS.
 * SODDING - Item 612
 NB 495+75 RT

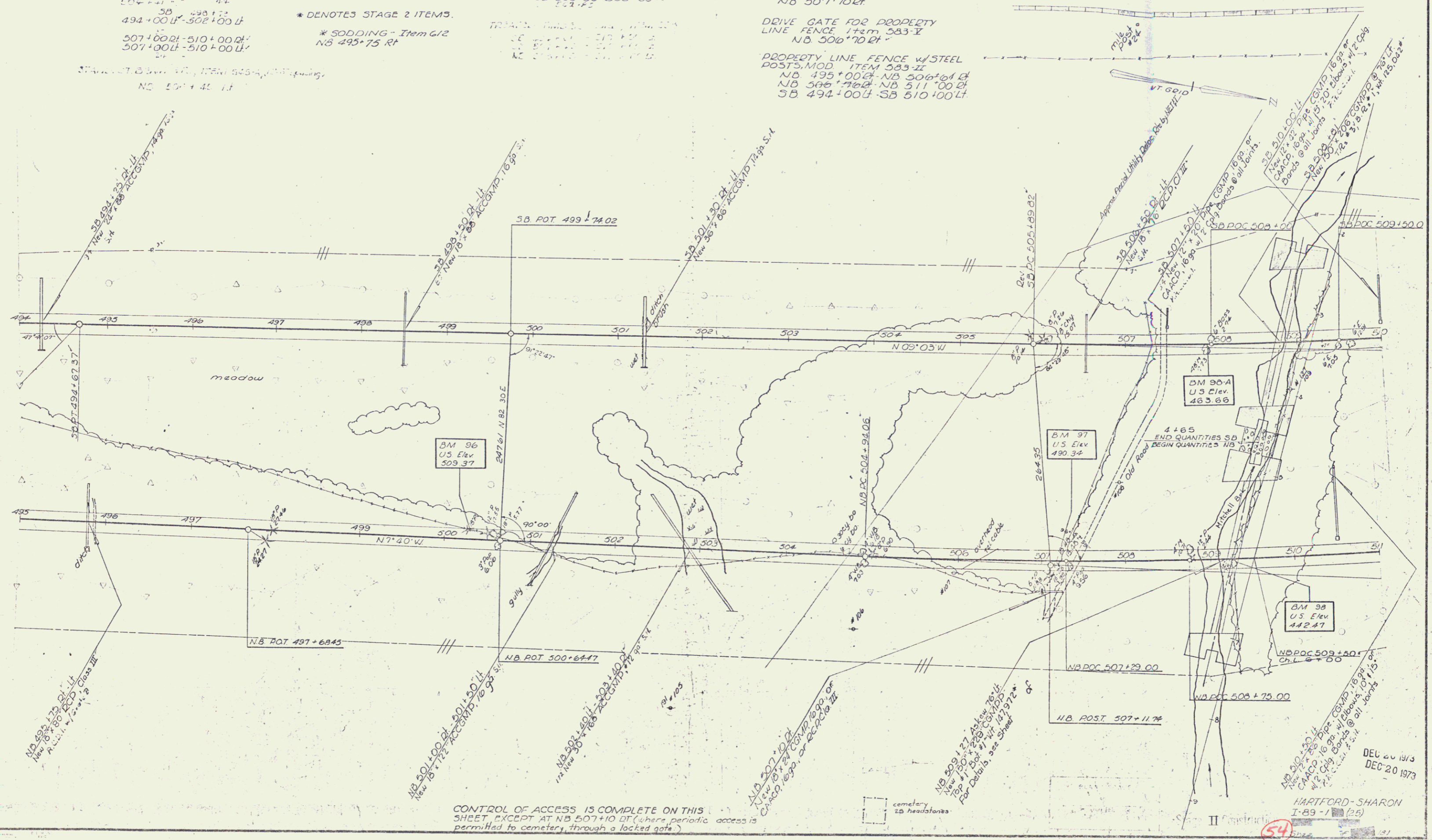
DRILLING & BLASTING of SOLID
 ROCK SUBGRADE, ITEM 115
 NB 495+00-500+25 RT
 NB 504+25-506+25
 SB 503+50-506+00 LF

JUTE MATTING, ITEM 623
 SB 494+00 LF-499+25 RT

CONSTRUCT DRIVE
 NB 507+10 RT

DRIVE GATE FOR PROPERTY
 LINE FENCE Item 583-V
 NB 500+70 RT

PROPERTY LINE FENCE w/ STEEL
 POSTS, MOD. ITEM 583-22
 NB 495+00 LF- NB 506+00 LF
 NB 506+70 LF- NB 511+00 LF
 SB 494+00 LF- SB 510+00 LF



CONTROL OF ACCESS IS COMPLETE ON THIS SHEET EXCEPT AT NB 507+10 RT (where periodic access is permitted to cemetery through a locked gate)

DEC 20 1973
 DEC 20 1973

HARTFORD-SHARON
 I-89-1 (25)

54

53