

* THREE RAIL GUARD RAIL LIGHT STEEL POSTS, ITEM 538 NB 464+00 LT - 476+00 LT 462+00 LT - 468+00 LT 461+00 LT - 469+00 LT

* CEDAR LOG GUARD RAIL, ITEM 546 NB 473+00 - 476+00 LT SB 474+00 - 477+00 LT

* DENOTES STAGE 2 ITEMS

RIPRAP (LIGHT TYPE), ITEM 513 B NB 464+65 RT - 465+35 RT

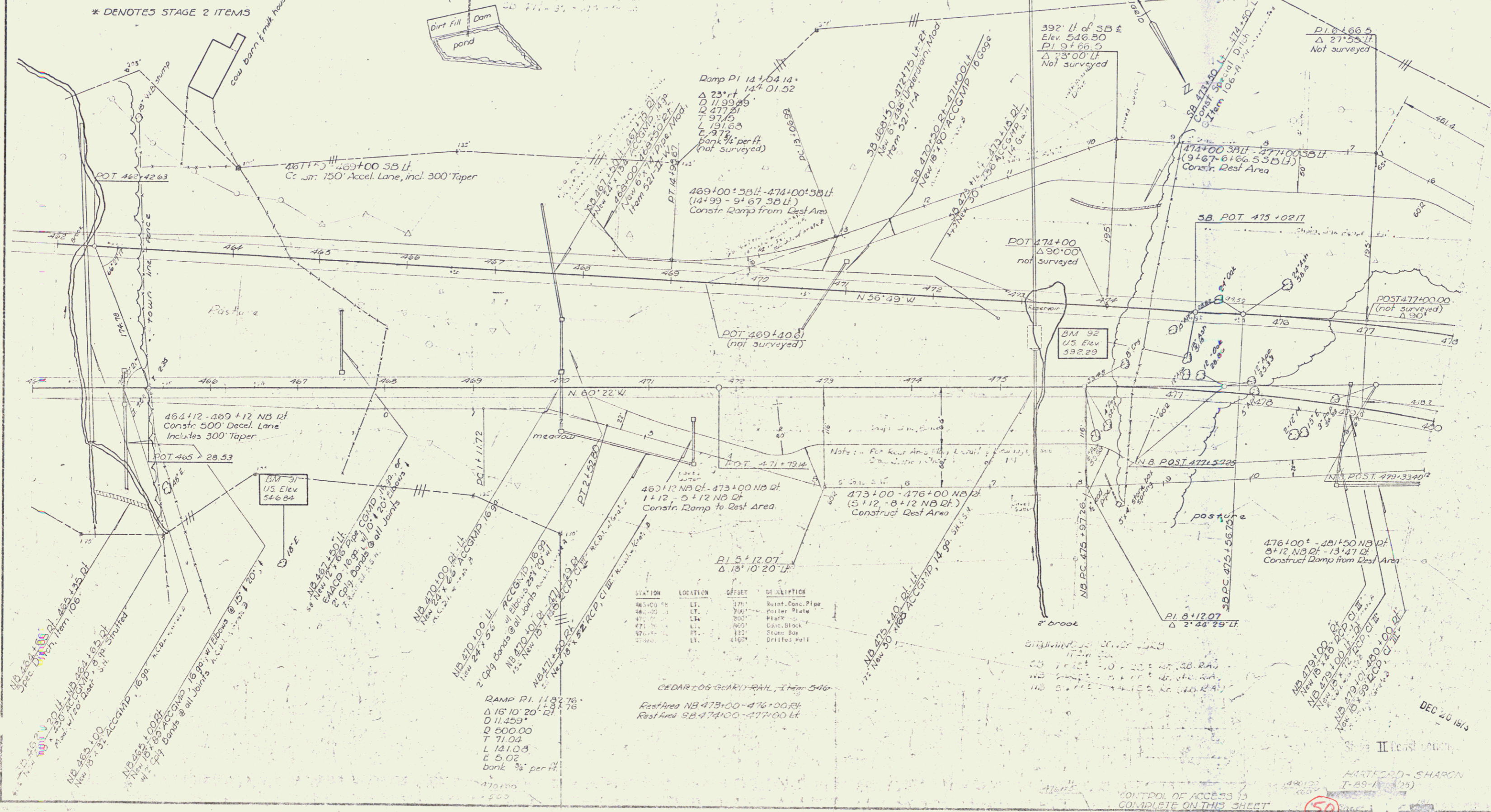
* BITUMINOUS CONCRETE CURB ITEM 555, TYPE II NB 464+00 LT - 473+50 LT 462+00 LT - 464+50 LT 464+00 LT - 467+48 RT

* SODDING, Item 612 NB 470+00 LT

DRILLING & BLASTING OF SOLID ROCK, SUBGRADE, ITEM 115 478+00 - 480+00 NB 472+75 - 473+00 SB

JUTE MATTING, ITEM 623 NB 464+00 LT - 467+50 LT 468+25 RT - 476+00 RT 469+75 LT - 475+25 LT

PROPERTY LINE FENCE, MOD ITEM 553-II SB 462+00 - 473+00 LT NB 464+00 - 480+00 RT



STATION	LOCATION	OFFSET	DESCRIPTION
465+00	LT	575'	Point Conc. Pipe
465+00	LT	700'	Point Plate
471+00	LT	800'	Gate Block
471+00	RT	110'	Stone Box
471+00	LT	410'	Drilled Well

DEC 20 1913

CONTROL OF ACCESS IS COMPLETE ON THIS SHEET