

STANDARD STEEL BEAM GUARD DAIL
W/STEEL POSTS, ITEM 525-A
SB 524+60 - 525+12 DI

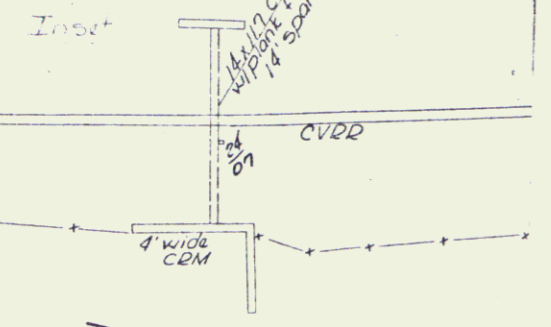
THREE CABLE GUARD DAIL
W/STEEL POSTS, ITEM 542
NB 511+00 - 511+56 LI
NB 511+00 - 511+68 LI
NB 526+50 - 527+00 LI
NB 526+50 - 527+00 LI
SB 510+00 - 510+60 LI
SB 510+00 - 512+68 LI
SB 522+90 - 525+12 LI

BIT CONG CURB, ITEM 555, TYPE II
NB 511+00 - 511+50 LI
SB 510+00 - 512+50 LI

JUTE MATTING, ITEM 623
NB 511+75 - 514+25 LI
NB 512+50 - 525+25 LI
SB 494+00 - 499+00 DI

Rev SB Curve Data
Δ 93° 18' Lt
D 1' 00"
Q 5729.58
T 1713.51
L 3330.00
E 250.74
Brk 9/16 per ft
527+85
100'

NB Curve Data
Δ 36° 09' 53" Lt
D 1'
Q 5729.58
T 1870.79
L 5016.48
E 297.71
Brk 9/16 (0.0271)
527+85
100'



SB ROC 510+700

NB ROC 511+7300

BM 99
U.S. Elev
476.93

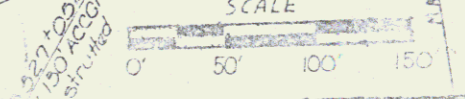
BM 100
U.S. Elev
483.67

BM 101
U.S. Elev
481.72

NB POST 518+34.68

STONE FILL (LIGHT TYPE)
ITEM 512
NB 526+79 - 527+04 DI
NB 527+18 - 527+41 DI
SB 524+58 - 526+81 DI
SB 524+95 - 525+18 DI

SHOULDER ITEM 513-B
NB 527+04 - 527+16 DI
SB 524+01 - 524+93 DI
SB 512+00 DI - LI



VERMONT DEPARTMENT OF HIGHWAYS
NB 527+50 CROSS-SECTION OF WAY PLANS

PROJECT: HARTFORD-SHAFT
No. T-527-16
OF 22
25