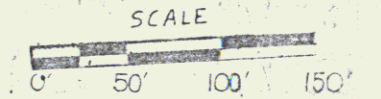
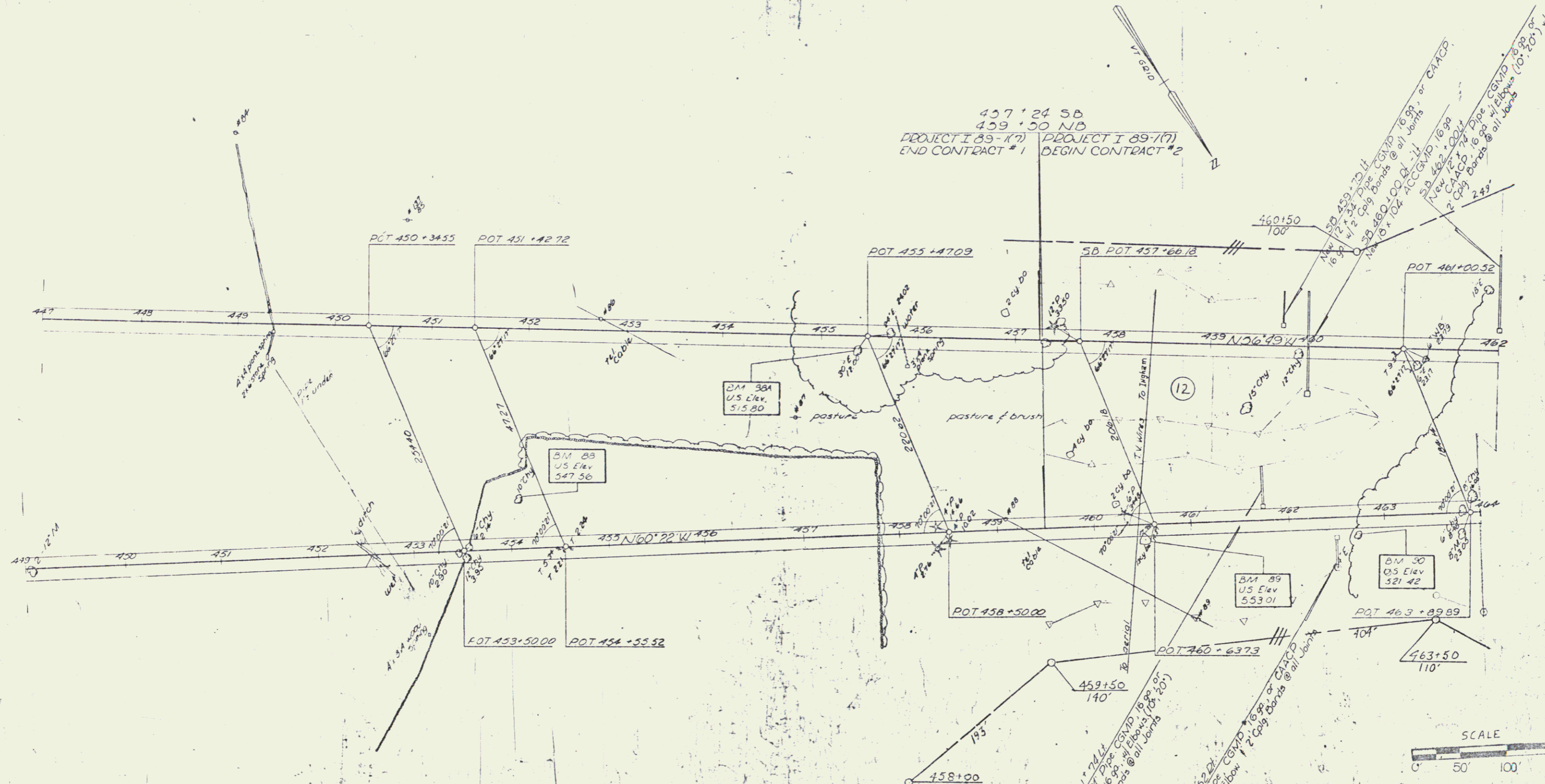


THREE CABLE GUARD W/ STEEL
POSTS ITEM 542
461+54 - 464+00 NB LH
462+52 - 464+00 NB RH
459+50 - 462+00 SB LH

BITUMINOUS CONCRETE
CURB ITEM 555, TYPE II
461+74 - 464+00 NB LH
462+52 - 464+00 NB RH
459+75 - 462+00 SB LH

JUTE MATTING, ITEM 623
NB 463+25 - 464+00 LH



VERMONT DEPARTMENT OF HIGHWAYS
RIGHT - OF - WAY PLANS
PROJECT: HARTFORD - SHADON
No. T-89-1(16)
SHEET 21 OF 23

DATE: 10/15/89
 DRAWN BY: J. C. HARRIS
 CHECKED BY: J. C. HARRIS
 SCALE: AS SHOWN