

Drilling and Blasting of Solid Rock Sub-grade, Item 115
 295+00 to 302+00*
 Drilling & Presplitting of Solid Rock, Item 125
 299+25-302+00 SB LT
 299+75-302+00 NB LT

Stone Fill For Slope Protection, Item 512
 Southbound 287+00 to 291+32 LT
 Northbound 288+95 to 291+25 LT

Jute Matting, Item 623
 Median 287+00 to 289+00*
 Median 291+00 to 293+00*

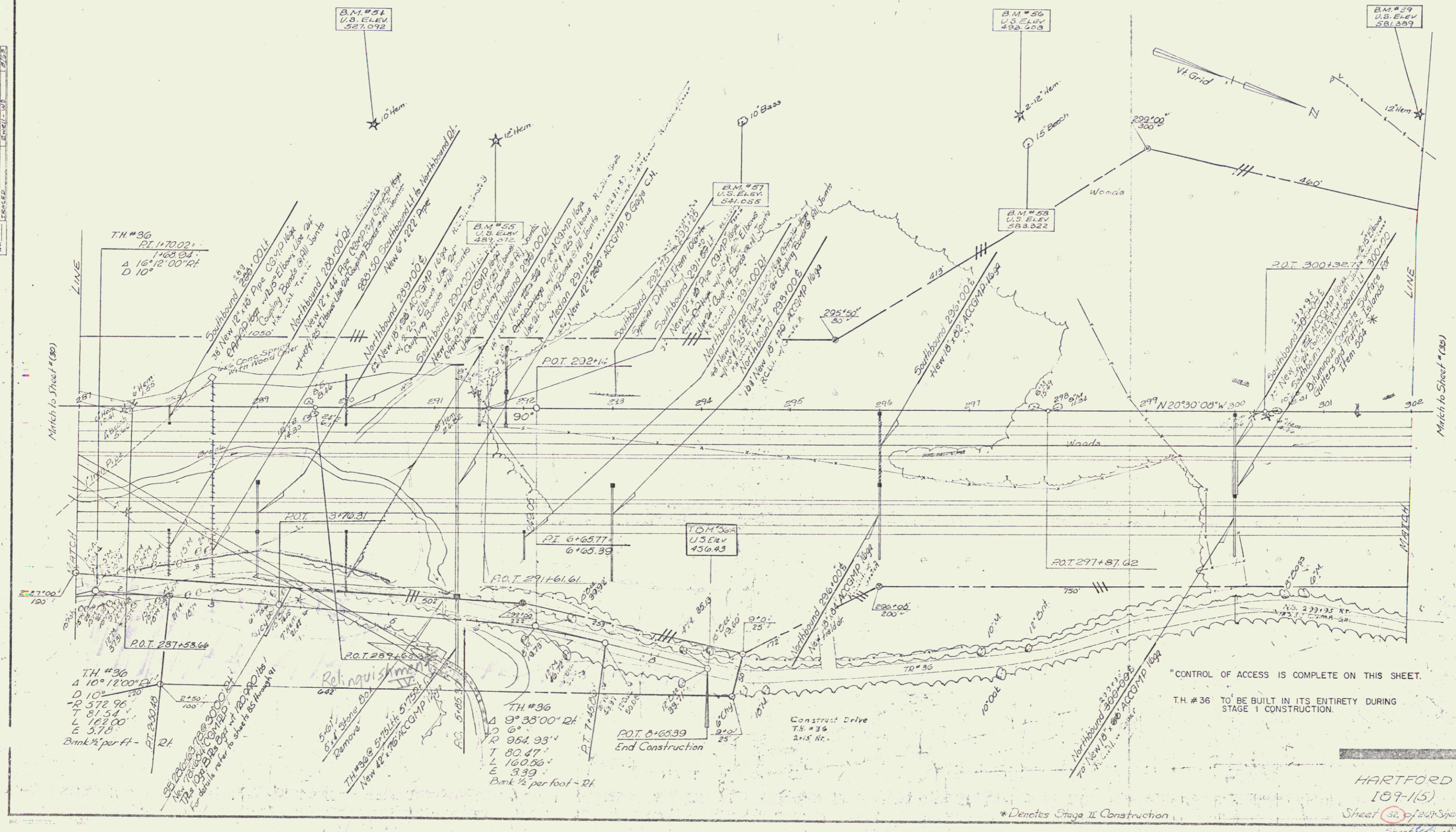
Two Cable Guard Rail, Item 541
 T.H.#36 5+45 to 7+05 DT

Three Cable Guard Rail w/ Steel Posts, Item 5+2*
 Northbound 287+00 to 293+25 DT
 Southbound 287+00 to 291+25 DT

Bituminous Concrete Curb, Item 535*
 Southbound 287+00 to 291+25 DT
 Northbound 287+00 to 291+25 DT

Property Line Fence w/ Steel Posts, Item 333-II
 NB 287+00-302+00 DT
 SB 287+00-302+00 LT

PLAN SHEETED BY
 CHECKED BY
 NOTE BOOK NO. 150778
 CHECKED BY
 DATE 11/12/83



"CONTROL OF ACCESS IS COMPLETE ON THIS SHEET."
 T.H. #36 TO BE BUILT IN ITS ENTIRETY DURING STAGE I CONSTRUCTION.

DEC 19 1983

HARTFORD 189-1(24)
 189-115
 Sheet 32 of 141
 Sheet 5 of 141