

BIT CONCRETE CURB, ITEM 553*
 NB 257+00.00 - 258+00.00
 NB 262+30.21 - 266+43.21

THREE-CABLE GUARD RAIL
 W/ STEEL POSTS, ITEM 542*
 NB 257+00 - 258+24.21
 NB 261+80 - 266+80.21
 NB 266+70 - 272+00.21
 SB 266+80 - 266+86.11

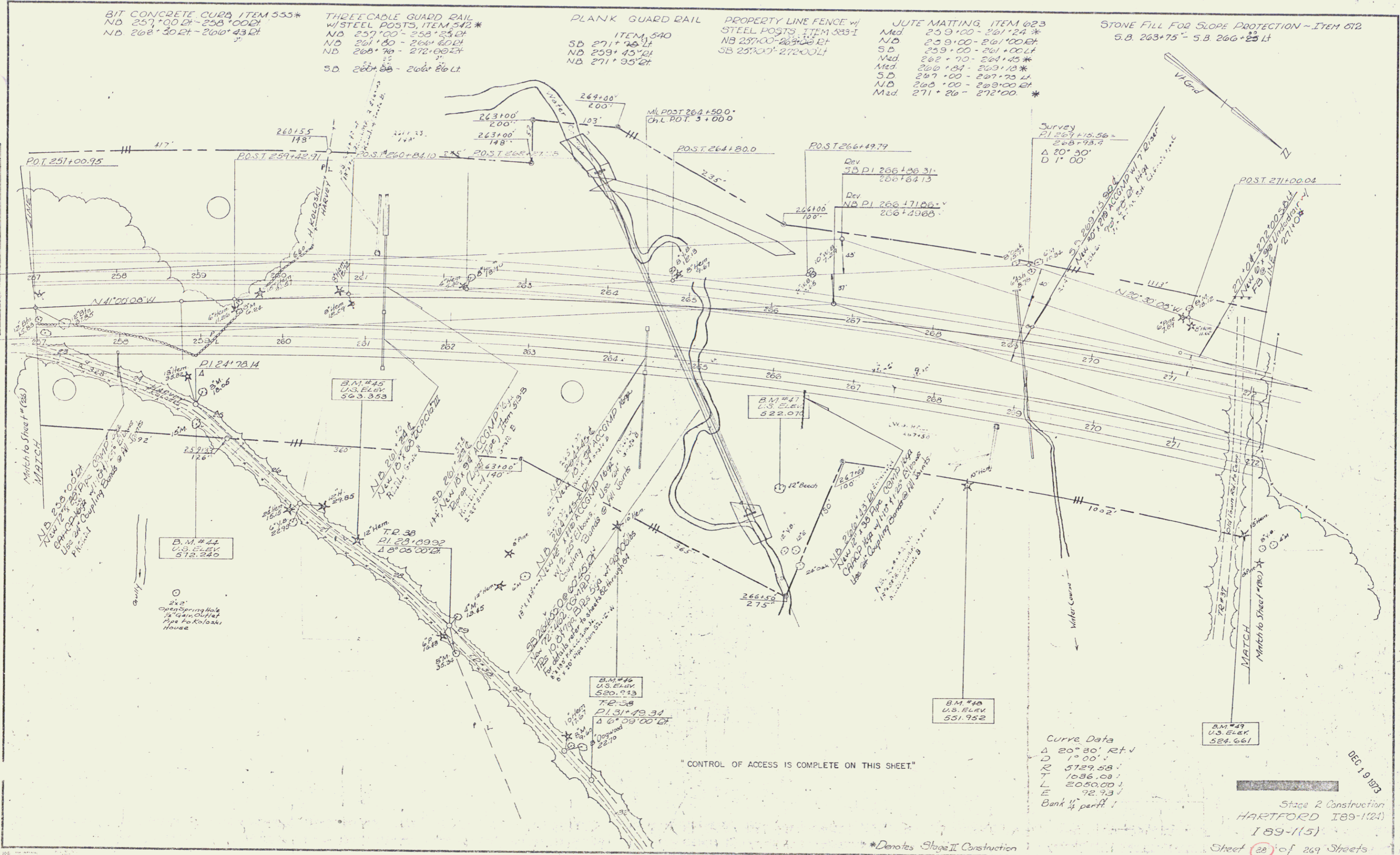
PLANK GUARD RAIL
 ITEM 540
 SB 271+20.11
 NB 271+35.21

PROPERTY LINE FENCE w/
 STEEL POSTS, ITEM 583-I
 NB 257+00 - 263+00.21
 SB 257+00 - 272+00.11

JUTE MATTING, ITEM 623
 Med 259+00 - 261+24*
 NB 259+00 - 261+00.21
 SB 259+00 - 261+00.11
 Med 262+70 - 264+45*
 Med 266+80 - 269+10*
 SB 267+00 - 267+25.11
 NB 268+00 - 269+00.21
 Med 271+20 - 272+00*
 NB 271+20 - 272+00.21

STONE FILL FOR SLOPE PROTECTION - ITEM 612
 S.B. 263+75 - S.B. 266+25.11

PLAN REVISIONS
 NO. DATE BY
 1 11/15/89 J.S.M.
 2 11/15/89 J.S.M.
 3 11/15/89 J.S.M.
 4 11/15/89 J.S.M.
 5 11/15/89 J.S.M.
 6 11/15/89 J.S.M.
 7 11/15/89 J.S.M.
 8 11/15/89 J.S.M.
 9 11/15/89 J.S.M.
 10 11/15/89 J.S.M.
 11 11/15/89 J.S.M.
 12 11/15/89 J.S.M.
 13 11/15/89 J.S.M.
 14 11/15/89 J.S.M.
 15 11/15/89 J.S.M.
 16 11/15/89 J.S.M.
 17 11/15/89 J.S.M.
 18 11/15/89 J.S.M.
 19 11/15/89 J.S.M.
 20 11/15/89 J.S.M.
 21 11/15/89 J.S.M.
 22 11/15/89 J.S.M.
 23 11/15/89 J.S.M.
 24 11/15/89 J.S.M.
 25 11/15/89 J.S.M.
 26 11/15/89 J.S.M.
 27 11/15/89 J.S.M.
 28 11/15/89 J.S.M.
 29 11/15/89 J.S.M.
 30 11/15/89 J.S.M.
 31 11/15/89 J.S.M.
 32 11/15/89 J.S.M.
 33 11/15/89 J.S.M.
 34 11/15/89 J.S.M.
 35 11/15/89 J.S.M.
 36 11/15/89 J.S.M.
 37 11/15/89 J.S.M.
 38 11/15/89 J.S.M.
 39 11/15/89 J.S.M.
 40 11/15/89 J.S.M.
 41 11/15/89 J.S.M.
 42 11/15/89 J.S.M.
 43 11/15/89 J.S.M.
 44 11/15/89 J.S.M.
 45 11/15/89 J.S.M.
 46 11/15/89 J.S.M.
 47 11/15/89 J.S.M.
 48 11/15/89 J.S.M.
 49 11/15/89 J.S.M.
 50 11/15/89 J.S.M.
 51 11/15/89 J.S.M.
 52 11/15/89 J.S.M.
 53 11/15/89 J.S.M.
 54 11/15/89 J.S.M.
 55 11/15/89 J.S.M.
 56 11/15/89 J.S.M.
 57 11/15/89 J.S.M.
 58 11/15/89 J.S.M.
 59 11/15/89 J.S.M.
 60 11/15/89 J.S.M.
 61 11/15/89 J.S.M.
 62 11/15/89 J.S.M.
 63 11/15/89 J.S.M.
 64 11/15/89 J.S.M.
 65 11/15/89 J.S.M.
 66 11/15/89 J.S.M.
 67 11/15/89 J.S.M.
 68 11/15/89 J.S.M.
 69 11/15/89 J.S.M.
 70 11/15/89 J.S.M.
 71 11/15/89 J.S.M.
 72 11/15/89 J.S.M.
 73 11/15/89 J.S.M.
 74 11/15/89 J.S.M.
 75 11/15/89 J.S.M.
 76 11/15/89 J.S.M.
 77 11/15/89 J.S.M.
 78 11/15/89 J.S.M.
 79 11/15/89 J.S.M.
 80 11/15/89 J.S.M.
 81 11/15/89 J.S.M.
 82 11/15/89 J.S.M.
 83 11/15/89 J.S.M.
 84 11/15/89 J.S.M.
 85 11/15/89 J.S.M.
 86 11/15/89 J.S.M.
 87 11/15/89 J.S.M.
 88 11/15/89 J.S.M.
 89 11/15/89 J.S.M.
 90 11/15/89 J.S.M.
 91 11/15/89 J.S.M.
 92 11/15/89 J.S.M.
 93 11/15/89 J.S.M.
 94 11/15/89 J.S.M.
 95 11/15/89 J.S.M.
 96 11/15/89 J.S.M.
 97 11/15/89 J.S.M.
 98 11/15/89 J.S.M.
 99 11/15/89 J.S.M.
 100 11/15/89 J.S.M.



"CONTROL OF ACCESS IS COMPLETE ON THIS SHEET."

Curve Data
 Δ 20° 30' Rt. v
 D 1° 00'
 R 5129.58'
 T 1086.08'
 L 2050.00'
 E 92.93'
 Bank 1/4 part 1

DEC 19 1989
 Stage 2 Construction
 HARTFORD I89-1124
 I 89-115
 Street 20 of 269 Streets
 Sheet 61 of 141